



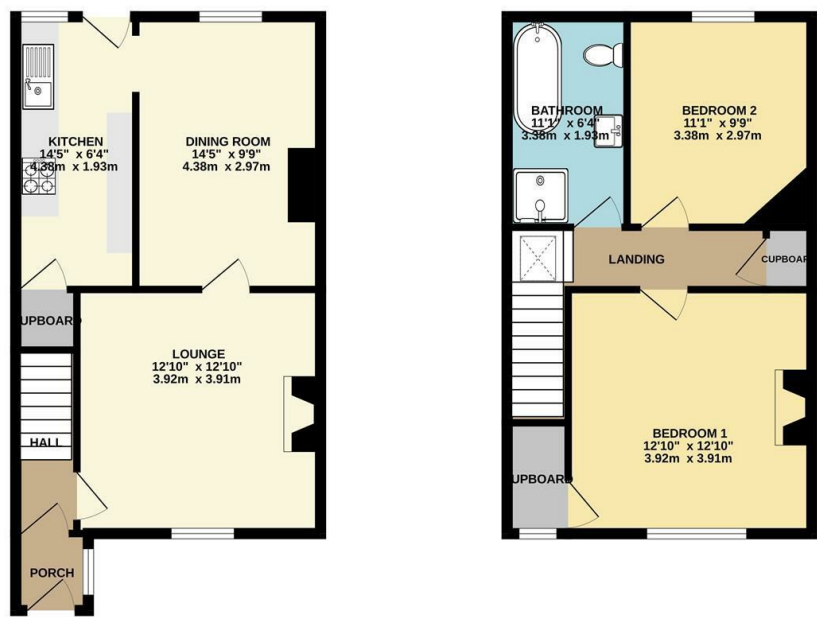
House - Terraced (EPC Rating: C)

# PEVERELL TERRACE, PEVERELL, PLYMOUTH PCM

## £1,000

# 2 Bedroom House - Terraced located in Plymouth

**\*\*GREAT LOCATION\*\*** Lovely SPACIOUS Home | A short WALK to Schools | Amenities Close By at Hyde Park | PERIOD FEATURES | Front Garden & Rear COURTYARD | On Road Parking | Deposit £1153.84 | Council Tax Band B

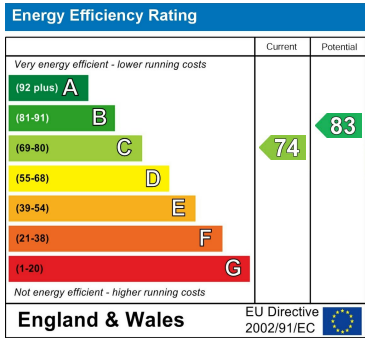


TOTAL FLOOR AREA: 891 sq.ft. (82.7 sq.m.) approx.  
Whilst every attempt has been made to ensure the accuracy of the floorplan contained here, measurements of doors, windows, rooms and any other items are approximate and no responsibility is taken for any error, omission or mis-statement. This plan is for illustrative purposes only and should be used as such by any prospective purchaser. The services, systems and appliances shown have not been tested and no guarantee as to their operability or efficiency can be given.  
Made with Metropix ©2024



Council Tax Band  
**C**  
Energy Performance Graph

Call us on  
**01752 201010**  
[enquiries@langtownandcountry.com](mailto:enquiries@langtownandcountry.com)  
[www.langtownandcountry.com](http://www.langtownandcountry.com)



Agents Note: Whilst every care has been taken to prepare these particulars, they are for guidance purposes only. All measurements are approximate and are for general guidance purposes only and whilst every care has been taken to ensure their accuracy, they should not be relied upon and potential buyers are advised to recheck the measurements.