



3 Essex Street, Horwich

Miller Metcalfe
Every step of the way

3 Essex Street

Horwich, Bolton

FOR SALE BY MODERN AUCTION - STARTING BID £110,000 PLUS RESERVATION FEES
- NO CHAIN

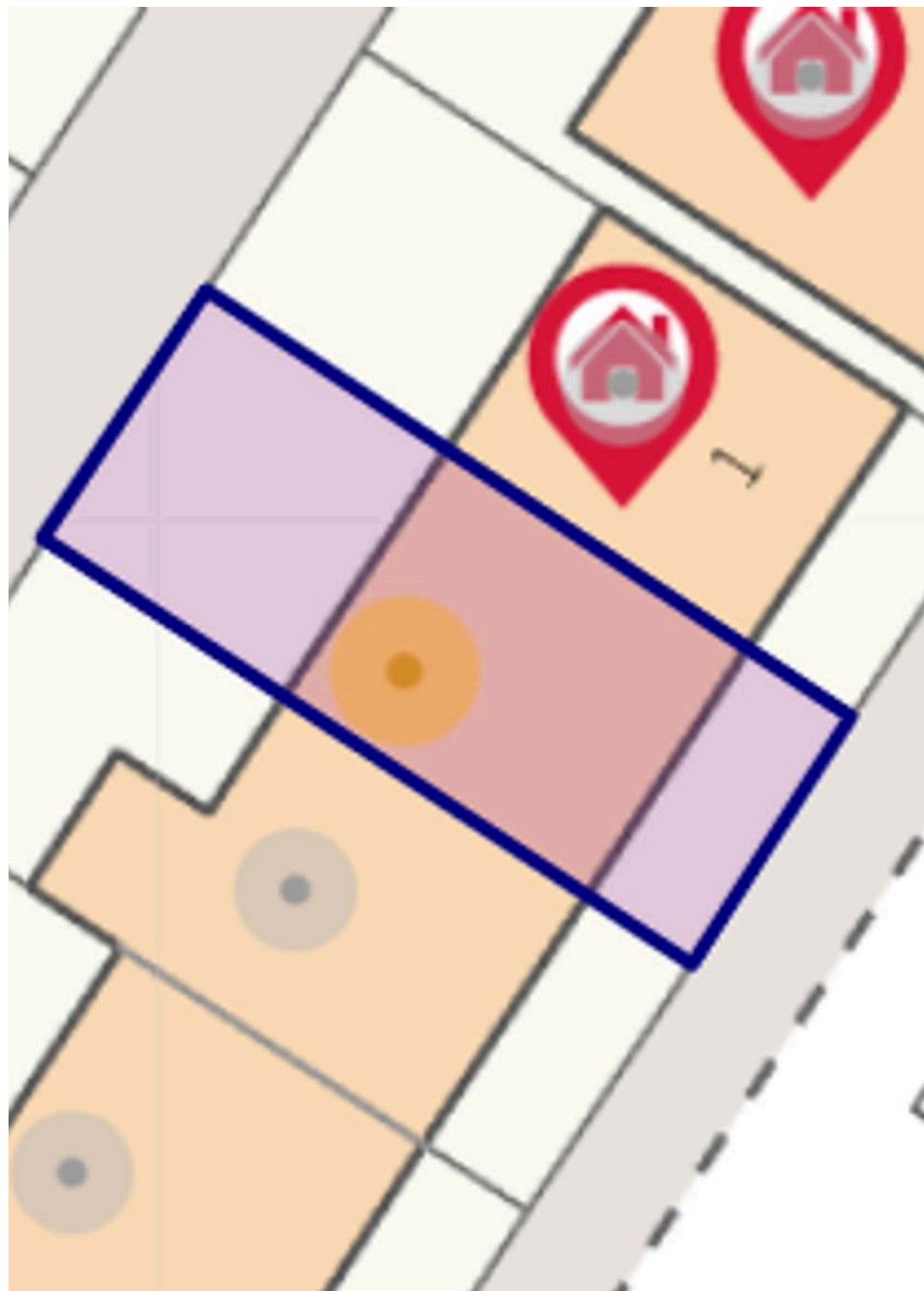
This is a fabulous opportunity to purchase a three bedroom terraced house, the property requires full modernisation throughout offering a huge amount of potential for any prospective buyer. Internal viewing advised.

Positioned within the prime town of Horwich, offering excellent commuter links to Chorley & Bolton via the M61 motorway, plus renowned schools, countryside walks up to Rivington Pike, and a wealth of shops & eateries at Middlebrook Retail Park.

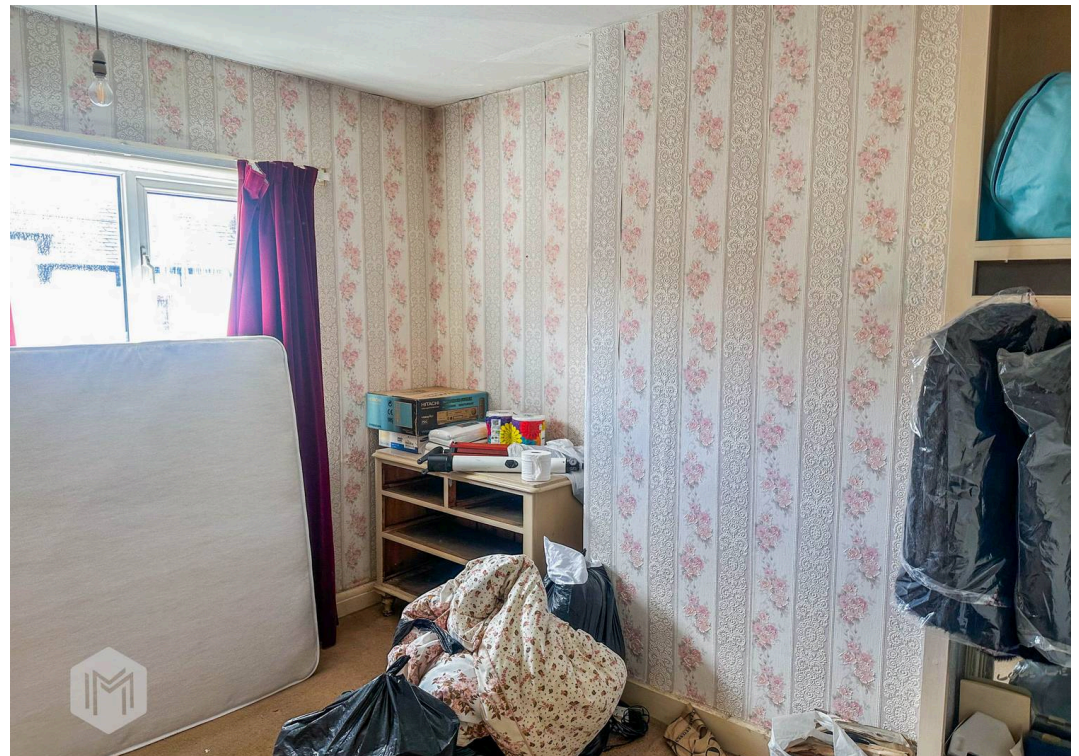
Accommodation briefly comprising entrance hall, lounge, dining kitchen. Rising to the first floor are three bedrooms and a three piece family bathroom suite. Outside there is a garden to the front and rear.

Council Tax band: A

Tenure: Freehold

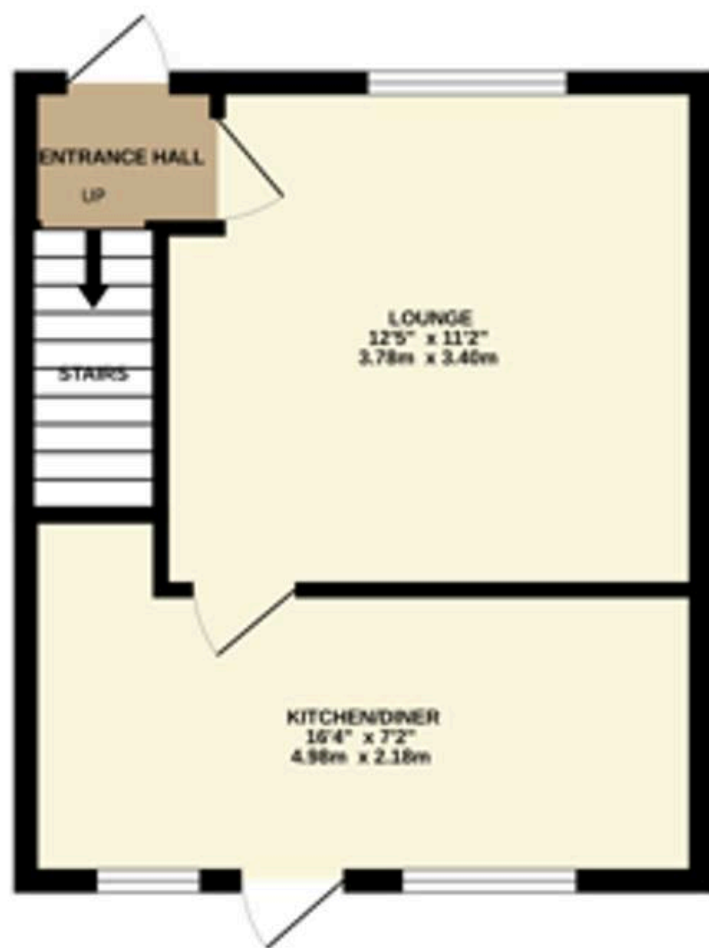




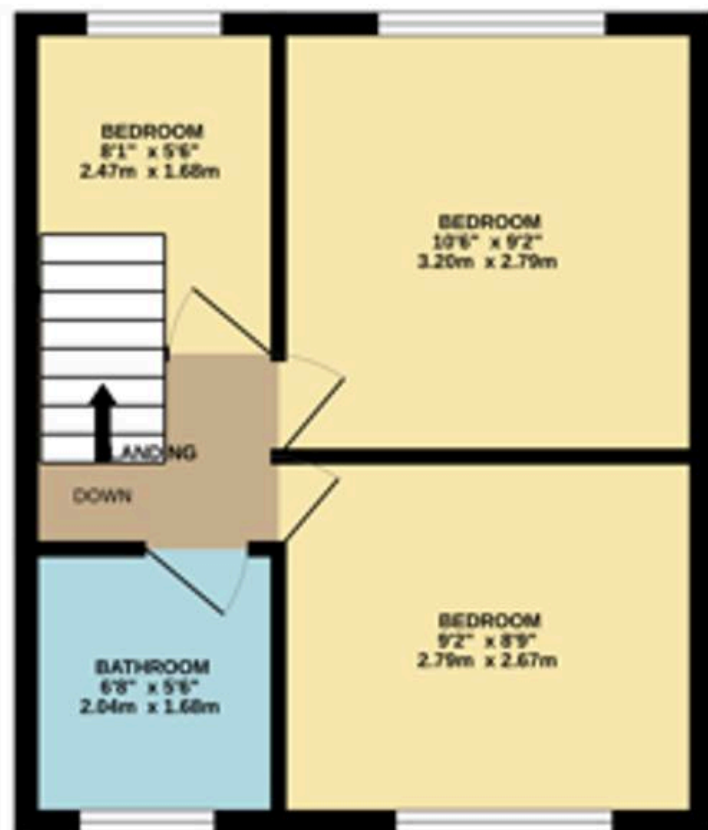




GROUND FLOOR
324 sq.ft. (30.1 sq.m.) approx.



1ST FLOOR
324 sq.ft. (30.1 sq.m.) approx.



TOTAL FLOOR AREA : 648 sq.ft. (60.2 sq.m.) approx.

Whilst every attempt has been made to ensure the accuracy of the floorplan contained here, measurements of doors, windows, rooms and any other items are approximate and no responsibility is taken for any error, omission or mis-statement. This plan is for illustrative purposes only and should be used as such by any prospective purchaser. The services, systems and appliances shown have not been tested and no guarantee as to their operability or efficiency can be given.
Made with Metropix ©2005



Miller Metcalfe Bolton

Miller Metcalfe, 2-10 Bradshawgate - BL1 1DG

01204 535353 • bolton@millermetcalfe.co.uk • millermetcalfe.co.uk/

Miller Metcalfe
Every step of the way