



Bromyard Avenue, London W3

Price £1,850 per month - Furnished





Description

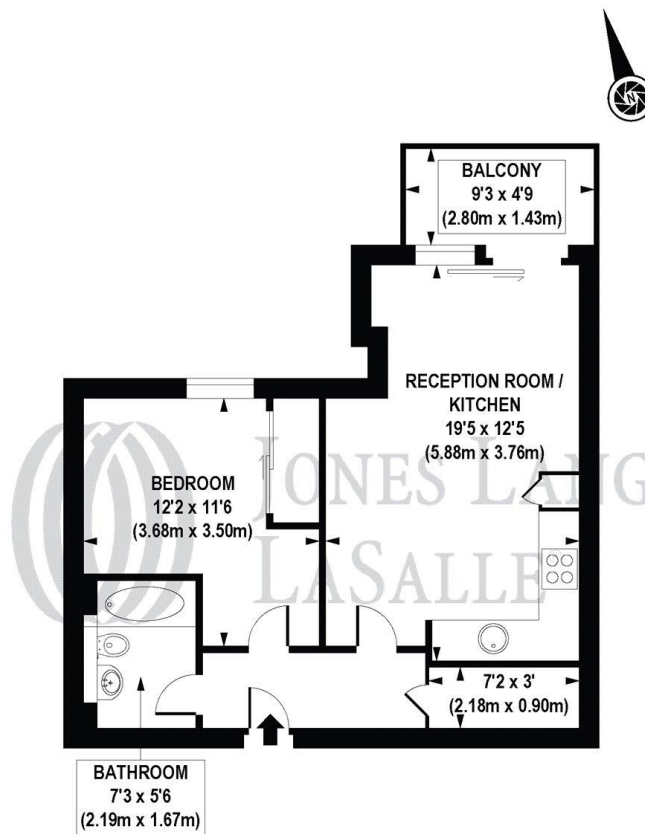
The property consists of one double bedroom, one bathroom, reception room and a fully fitted, open plan kitchen. Further benefits include wooden flooring in the reception room and 24 hour concierge. Napier House is conveniently located close to Westfield Shopping Centre and the open spaces of Acton Park.



- One Bedroom Apartment
- Private Balcony
- Open Plan Living Room
- 24 hour Concierge
- 451 Sq ft (41.91 sq m)

Floorplan

451 sq ft | 42 sq m



SECOND FLOOR

APPROX. GROSS INTERNAL FLOOR AREA 451 sq. ft / 41.91 sq. m

COMPLIANT WITH RICS CODE OF MEASURING PRACTICE. Floorplan is for illustrative purposes only and is not to scale. Every attempt has been made to ensure the accuracy of the floorplan shown, however all measurements, fixtures, fittings and data shown are an approximate interpretation for illustrative purposes only. Liability for errors, omissions or mis-statement through negligence or otherwise is hereby excluded.



Kew Bridge
12 Capital Interchange Way,
London TW8 0SP
020 3147 1880
lettingskewbridge@jll.com

Urban living, your way.

jll.co.uk/residential

© 2019 Jones Lang LaSalle IP, Inc. All rights reserved. All information contained herein is from sources deemed reliable; however, no representation or warranty is made to the accuracy thereof.

