



Bosman Drive, Windlesham

Offers in excess of **£700,000**



Bosman Drive, Windlesham, Surrey

An extended four bedroom detached home on the popular Snows Ride development in Windlesham.

FEATURES

- Built by Charles Church
- Detached
- Double glazing/gas central heating
- New combi boiler and water softener 3 years ago
- Built in wardrobes
- Cul-de-sac position
- Part boarded insulated loft
- Cavity wall insulation

ACCOMMODATION

- Covered entrance porch
- Entrance hall
- Downstairs cloakroom
- Three reception rooms
- Kitchen/breakfast room
- Utility room
- Master bedroom with en-suite shower room
- Three further bedrooms
- Family bathroom

OUTSIDE

- Driveway parking
- Rear garden with patio
- Refurbished garage with premium flooring and lighting

EPC RATING

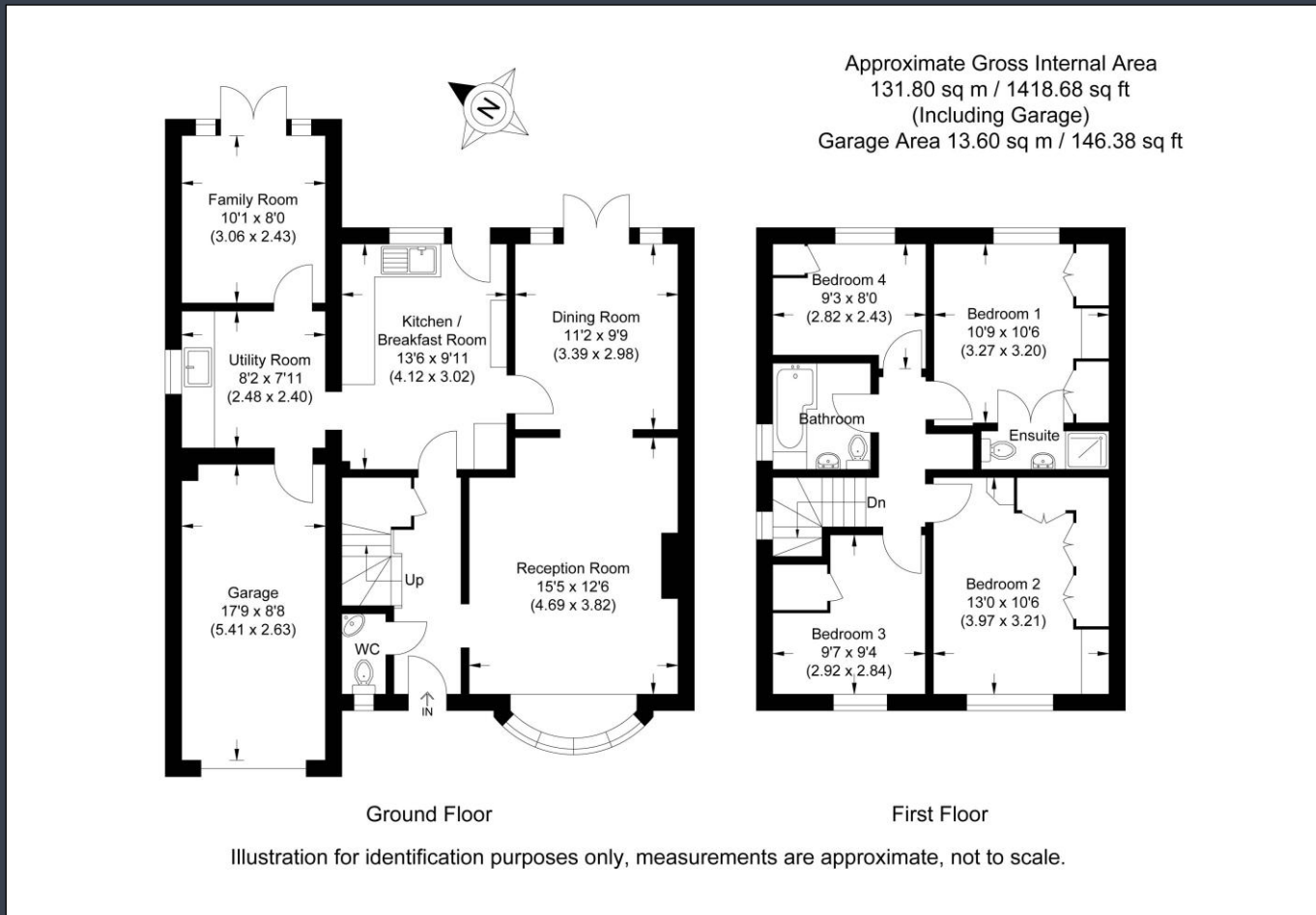
C

LOCAL AUTHORITY/COUNCIL TAX BAND

Surrey Heath – Band F







Disclaimer: We wish to inform prospective purchasers that we have prepared these sales particulars as a general guide. We have not carried out a detailed survey, nor tested the services, appliances and specific fittings. Room sizes are approximate and rounded: they are taken between internal wall surfaces and therefore include cupboards / shelves, etc. Accordingly, they should not be relied upon for carpeting, curtains / blinds and kitchen equipment, whether fitted or not, are deemed removable by the vendor unless specifically itemized within these.

Postcode for sat nav: GU20 6JN




NEWTON ROWE
 SALES & LETTINGS

The Old Dairy, 7 Updown Hill, Windlesham, Surrey GU20 6AF
enquiries@newtonrowe.co.uk | 01276 986900