

Seymour Place, W1H

£4,311 Per calendar month

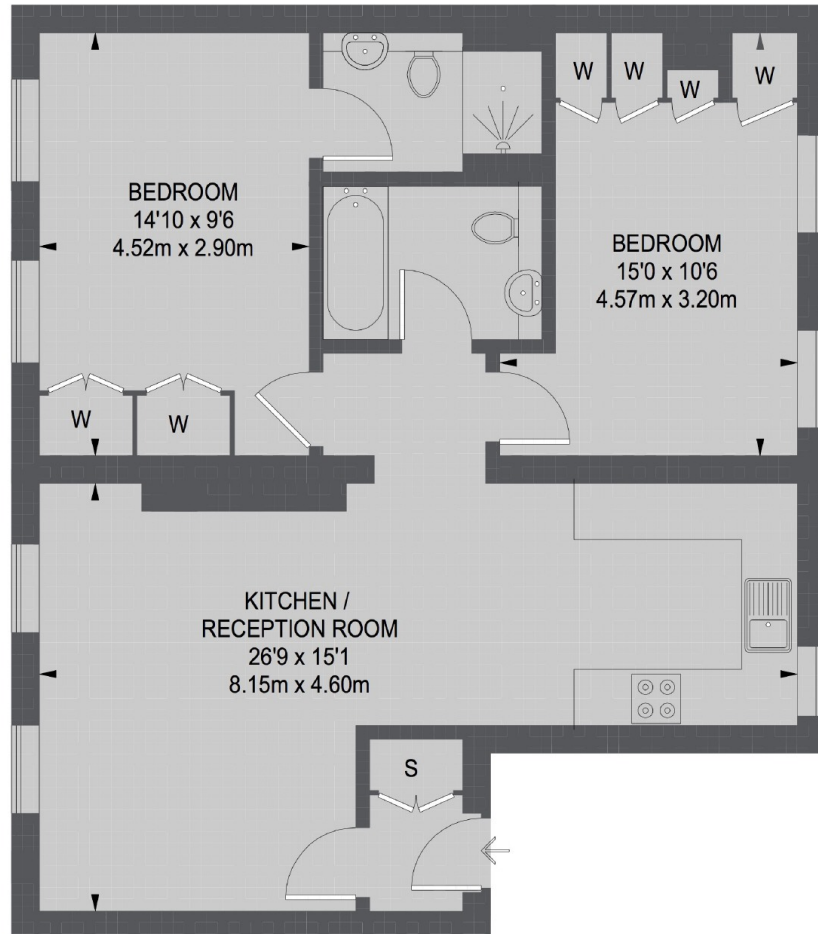
A two bedroom, two bathroom apartment on the second floor of this period conversion in the heart of Portman Village. There is an open-plan kitchen/reception room with modern built-in appliances, and ample storage.

Seymour Place is in the heart of Portman Village, a favourite for locals, providing a village vibe in the heart of central London. The community spirit is epitomised by the annual Portman Marylebone Summer Street Party, where food and live music are provided in abundance.

Features

Second Floor
Two Bedrooms
Two Bathrooms
Kitchen/Reception
Unfurnished
The Portman Estate

Seymour Place, London, W1H



SECOND FLOOR

TOTAL APPROX. FLOOR AREA 753 SQ. FT. (69.99 SQ. M.)