



Elsinore Gardens, London, NW2  
Fixed Price: £750,000

moreland 





Exclusive listing on this bright and well planned three bedroom terraced house arranged over two floors, with a conservatory at the rear and parking at the front.

Forming part of this secure gated development of similar houses and apartments, with a total of 28 properties including this one.

Comprising of a hallway with guest cloakroom, spacious living room opening into a large conservatory. Additionally, a refitted kitchen with integrated appliances.

On the first floor, there are three bedrooms and the bathroom.

Outside, there is a well tended private garden and allocated parking at the front, with the addition of visitor parking spaces in the centre of the development.

Conveniently located a short distance from either Cricklewood Thameslink Station or Brent Cross West Station, with easy access to either the A1(M) or M1 motorways. Also benefiting from regular bus routes on The Vale into and out of Central London.

Size - 1034 sq ft / 96.1 sq m



3 Bedroom

Tenure - Freehold



2 Bathroom

Council - Barnet

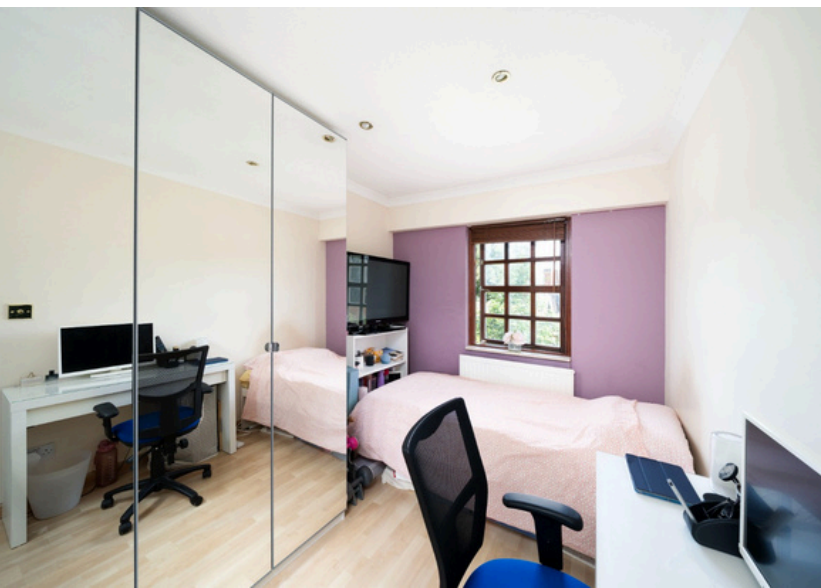


1 Reception

Tax Band - F



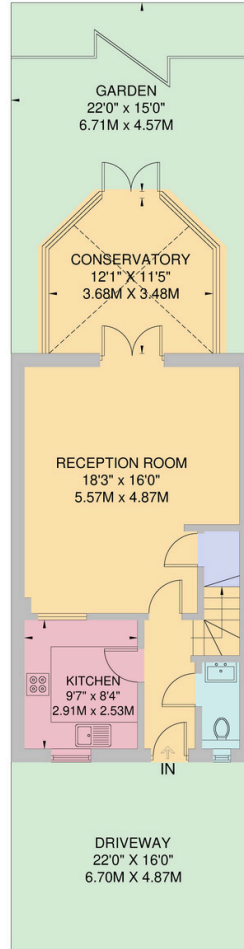
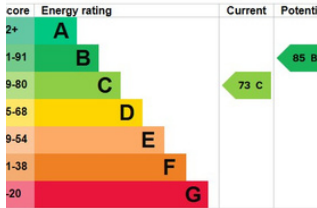
Off Road Parking



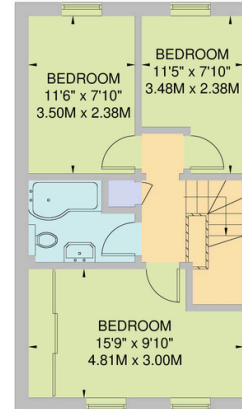


# Elsinore Gardens, NW2

Approximate Gross Internal Area  
96.1 sq m / 1034 sq ft



**GROUND FLOOR**  
55.5 sq m / 597 sq ft



**FIRST FLOOR**  
41.7 sq m / 449 sq ft

All Measurements are approximate and for identification guideline purposes only, not to scale.  
Compliant with the RICS code of measuring practice



At Moreland, our mission is to deliver a trusted, professional, and personalised property service by combining deep local expertise with clear communication and a genuine commitment to our clients' best interests.

We strive to make every property journey smooth, transparent, and successful, building long-term relationships through integrity, knowledge, and exceptional customer care.

020 8381 4970

info@morelandstateagents.co.uk

Moreland Estates Ltd is a company registered in England and Wales with company number 03663497

Trading Address is: 903 - 905 Finchley Road, Golders Green, London, NW11 7PE

VAT Registration Number: GB 701 775 936

Registered Office is: Unit 8 Alpha Business Park, Travellers Close, Welham Green, Hertfordshire, AL9 7NT

