

# RIVERMOUNT GARDENS



# RIVERMOUNT GARDENS

GUILDFORD, GU2 4DN

Available: 6th August 2026

£4,250 Per Month (Per Calendar Month)

House - Terraced, 3 Bedroom  
3 Bathroom, 2 Reception  
Unfurnished

## Summary

Stunning, ultra modern, three bedroom townhouse located in a premier location for Guildford town centre, river access and with superb energy efficiency.

## Key Features

- Convenient Guildford Town Centre Location
- Three Bedrooms
- Three Bathrooms
- Stunning Contemporary Finish
- A rated EPC For Energy Efficiency
- Available August







## THE PROPERTY

### Description

The house is finished to an exacting standard, having been built in 2024 and includes premium finishes throughout as well as a host of energy efficiency measures including solar panels giving the property the highest possible EPC rating of an A.

The front door opens into the entrance hall, with the ground floor covered in porcelain tiles, with underfloor heating and with views straight through to the rear garden. The kitchen is finished with stone worktops and includes integrated appliances, such as, conventional oven, combination microwave oven, induction hob, fridge/freezer and a dishwasher. The open plan family/dining area is a wonderfully light area, with bi fold doors opening onto the south facing garden. The ground floor also includes a downstairs w.c. and a BT fibre connection giving access to super-fast broadband.

From the stairs upwards, the flooring is carpeted and the heat comes through radiators. On the first floor is a second living room with French doors onto the south facing balcony, family bathroom suite with a shower over the bath, utility room with washing machine and dryer and a third bedroom which is currently used as a study and is fitted with wardrobes.



On the second floor is the principal bedroom with walk in wardrobe and ensuite shower room as well as the guest suite, also fitted with wardrobes and ensuite shower room.

To the front of the house is the private drive with EV charge point and to the rear is the private south facing garden with patio and lawned areas as well as cat fencing, which can be removed.

The garden benefits from long views over the valley towards St Catherine's Chapel.









## Location

Rivermount Gardens is located just south of the very centre of Guildford in a very pleasant location with resident only access onto the towpath that runs alongside the River Wey. Guildford town centre with its abundance of shops, entertainment and dining opportunities is a short walk away, as is the main line train station with regular, direct trains running to London Waterloo. The house is located close to County Senior school, rated Outstanding in its latest report. There are also other excellent state and private schools such as the Royal Grammar School for boys, Guildford High School and Tormead for girls. Road access to the A3 for travel to the coast or into London is excellent as are the road links to the larger supermarkets in both Guildford and Godalming.

Available early August

Holding deposit: £980

EPC A

Guildford Borough Council tax band F

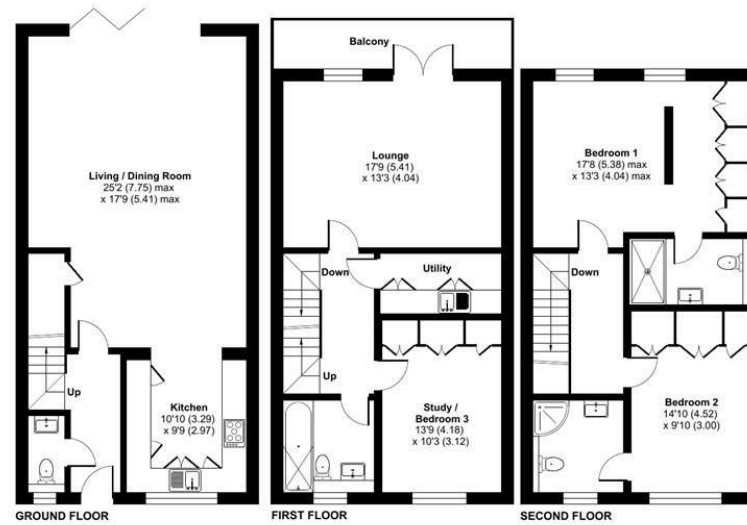
To check broadband and mobile phone coverage please visit Ofcom here: [ofcom.org.uk/phones-telecoms-and-internet/advice-for-consumers/advice/ofcom-checker](https://ofcom.org.uk/phones-telecoms-and-internet/advice-for-consumers/advice/ofcom-checker)



# Rivermount Gardens, Guildford, GU2

Approximate Area = 1850 sq ft / 171.8 sq m

For identification only - Not to scale



Floor plan produced in accordance with RICS Property Measurement 2nd Edition,  
Incorporating International Property Measurement Standards (IPMS2 Residential). © rlxhocom 2026.  
Produced for Grantleys. REF: 1450130

## Guildford

Poyle House 24 Epsom Road  
Guildford  
Surrey  
GU1 3LE

Tel: 01483 407600

