



## 4 Shearwater Close

Finberry Ashford, TN25 7JP

Price £360,000

Immaculately presented townhouse on the popular Finberry development,

- MODERN TOWNHOUSE
- POPULAR FINBERRY DEVELOPMENT
- FOUR BEDROOMS
- EN SUITE & FAMILY BATHROOM
- OFF ROAD PARKING FOR TWO CARS
- KITCHEN/DINING ROOM
- GROUND FLOOR CLOAKROOM
- EPC RATING - B (85)
- BEAUTIFUL COUNTRYSIDE WALKS NEARBY

### Viewing

Please contact our Ashford Office on 01233 646411 if you wish to arrange a viewing appointment for this property or require further information.



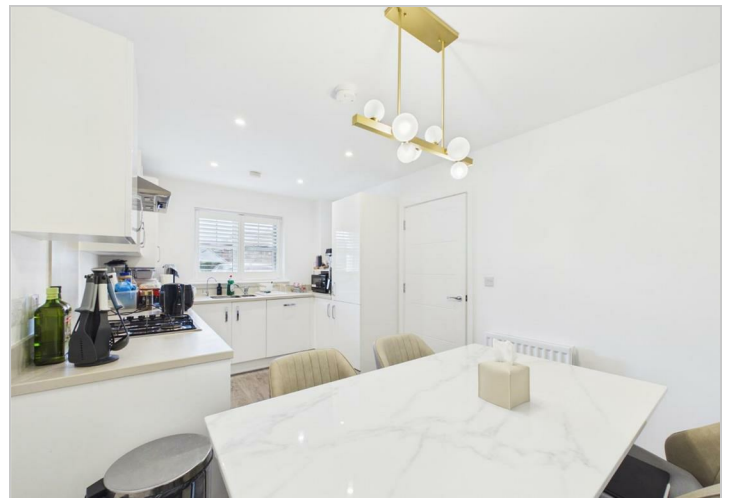
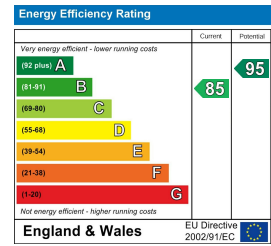
## Floor Plan



## Area Map



## Energy Efficiency Graph



These particulars, whilst believed to be accurate are set out as a general outline only for guidance and do not constitute any part of an offer or contract. Intending purchasers should not rely on them as statements of representation of fact, but must satisfy themselves by inspection or otherwise as to their accuracy. No person in this firm's employment has the authority to make or give any representation or warranty in respect of the property.