



Cromwell Road, Hertford, SG13 7DP

Welcome to Cromwell Road, Hertford

****A Rarely Available, Well-Presented Extended Three-Bedroom Semi-Detached Family Home****This spacious and beautifully maintained home, arranged over three floors, offers an ideal blend of character, comfort and modern living. The ground floor features a bright front reception room and a generous rear dining room that opens seamlessly into an extended kitchen, complete with direct access to the property's own private and secluded rear garden. The garden further benefits from side access and direct rear access to the allotments, creating a unique and highly desirable outdoor setting. A convenient downstairs cloakroom completes the ground floor accommodation. On the first floor, you will find two well-proportioned double bedrooms along with a larger-than-average contemporary family bathroom. The top floor hosts an impressive master bedroom suite, benefiting from its own en-suite shower room and double-glazed sliding doors that lead onto a private balcony. From here, you can enjoy truly breathtaking, uninterrupted views over the allotments and the Meads. Ideally situated between Hertford and Ware, this home is within walking distance of the Hertford railway line, Hertford town centre, local shops and well-regarded schooling-making it perfect for families and commuters alike. Offered Chain Free.



-Accommodation Overview-

Entrance Porch:

Door leading into lounge.

Lounge:

16' 8" x 12' 5" (5.08m x 3.78m)

Double glazed window to front aspect, feature gas fireplace, stairs to first floor, radiator.

Dining Room:

12' 6" x 10' 4" (3.81m x 3.15m)

Double glazed window to side aspect, door to cloakroom/utility room, radiator.

Kitchen:

12' 4" x 7' 3" (3.76m x 2.21m)

Fitted wall and base units with work surface over, stainless steel sink unit with mixer tap over, electric hob with oven beneath, built in freezer, roof light, double glazed window to side & rear aspect, roof light and door leading to rear garden.

Downstairs Cloakroom:

Wash hand basin, WC, extractor.

-First Floor Landing-

Double glazed window to side aspect, carpet, stairs to top floor.

Bedroom Two:

12' 5" x 7' 3" (3.78m x 2.21m)

Two double glazed windows to front aspect, carpet, radiator.

Bedroom Three:

12' 4" x 7' 1" (3.76m x 2.16m)

Two double glazed windows to rear aspect with great views, carpet, storage cupboard, radiator.

Bathroom:

Three-piece suite comprising of bath with shower over, pedestal wash hand basin, WC, fully tiled walls and flooring, chrome heated towel rail.

-Top Floor-

radiator.

Bedroom One:

20' x 12' 5" (6.10m x 3.78m)

Four Velux windows, double glazed sliding doors to own balcony with amazing views across Hertford countryside, radiator, door leading to shower room.

Shower Room:

Walk in shower, WC, fully tiled wall and flooring.

-Exterior-

Rear Garden:

A mature landscaped rear garden with lawn areas, patio area to rear, rear access to allotments, side access and storage shed.

Front Garden:

Shingle area, side access.



Check out more properties at williamhbrown.co.uk

Welcome to

Cromwell Road, Hertford

- A Well Presented Three Bedroom Semi-Detached Family Home
- Stunning Views Across Hertford Countryside
- Low Maintenance Rear Garden With Access To Allotments
- Chain Free
- Ideally Located For Hertford Town & Transport Links
- Large Family Bathroom & Shower Room

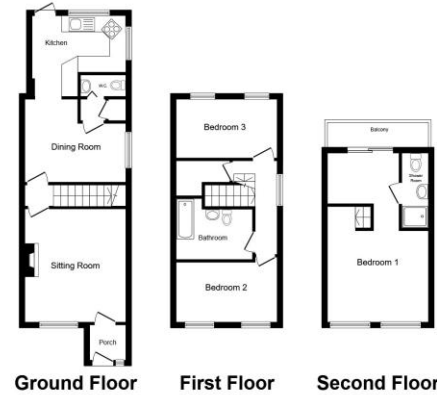
Tenure: Freehold

EPC Rating: C

Council Tax Band: D

Offers In Excess Of

£550,000



This floor plan is for illustrative purposes only. It is not drawn to scale. Any measurements, floor areas (including any total floor area), openings and orientation are approximate. No details are guaranteed, they cannot be relied upon for any purpose and they do not form part of any agreement. No liability is taken for any error, omission or misstatement. A party must rely upon its own inspection(s). Powered by www.propertybox.io



Please note the marker reflects the postcode not the actual property

check out more properties at williamhbrown.co.uk



Property Ref:
HFD108064 - 0006

1. MONEY LAUNDERING REGULATIONS Intending purchasers will be asked to produce identification documentation at a later stage and we would ask for your co-operation in order that there is no delay in agreeing the sale. 2. These particulars do not constitute part or all of an offer or contract. 3. The measurements indicated are supplied for guidance only and as such must be considered incorrect. Potential buyers are advised to recheck measurements before committing to any expense. 4. We have not tested any apparatus, equipment, fixtures or services and it is in the buyer's interest to check the working condition of any appliances. 5. Where an EPC, or a Home Report (Scotland only) is held for this property, it is available for inspection at the branch by appointment. If you require a printed version of a Home Report, you will need to pay a reasonable production charge reflecting printing and other costs. 6. We are not able to offer an opinion either written or verbal on the content of these reports and this must be obtained from your legal representative. 7. Whilst we take care in preparing these reports, a buyer should ensure that his/her legal representative confirms as soon as possible all matters relating to title including the extent and boundaries of the property and other important matters before exchange of contracts.

William H Brown is a trading name of Sequence (UK) Limited which is registered in England and Wales under company number 4268443, Registered Office is Cumbria House, 16-20 Hockliffe Street, Leighton Buzzard, Bedfordshire, LU7 1GN. VAT Registration Number is 500 2481 05.

william h brown



01992 586501



Hertford@williamhbrown.co.uk



21 Castle Street, HERTFORD, Hertfordshire,
SG14 1ER



williamhbrown.co.uk