

Old School Square, E14

£375,000

Set within a former Victorian school conversion, this one-bedroom home offers a mezzanine layout with double-height ceilings, all positioned within a secure gated development. The property features an open-plan reception with a modern kitchen, a double-height living area with large windows allowing an abundance of natural light, and wood flooring throughout.

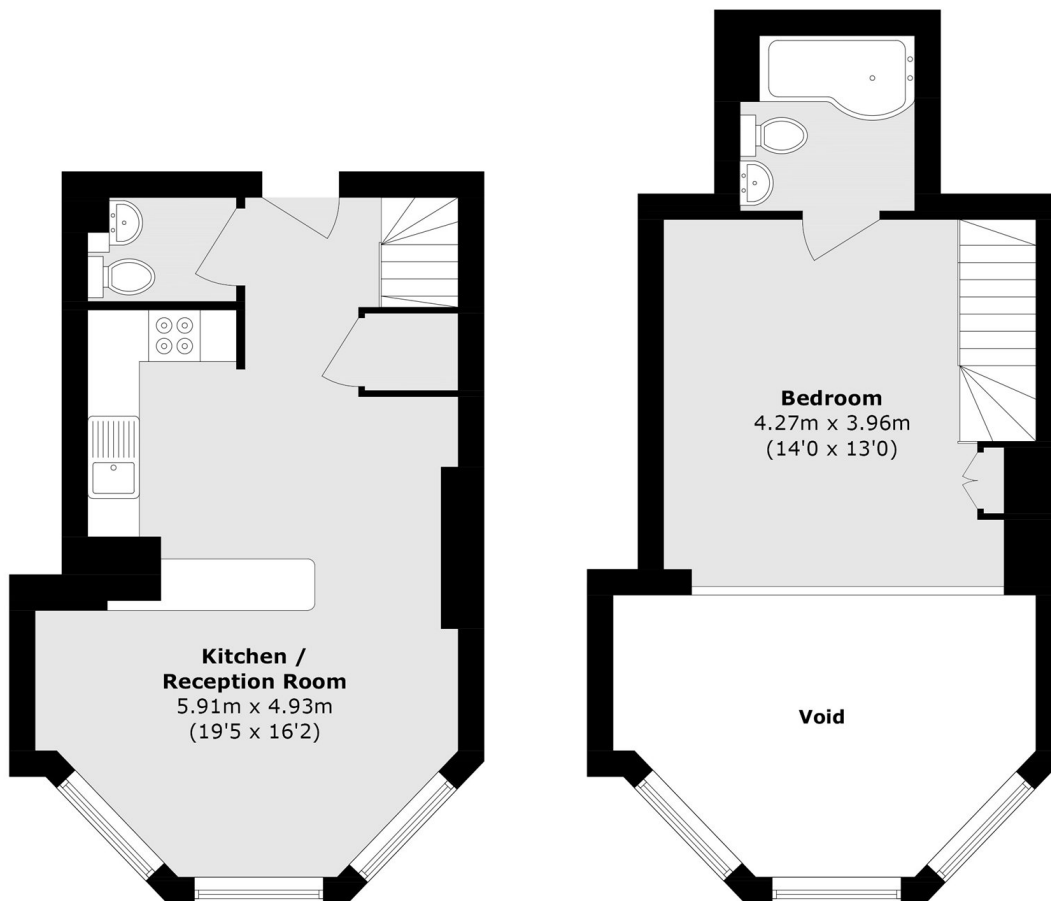
Ideally located by the Limehouse Cut canal, Old School Square is within close proximity to Bartlett Park and Mile End Park, along with a wide range of local amenities.

Westferry DLR station is just an 8-minute walk away, while Canary Wharf (Elizabeth line) station can be reached on foot in approximately 16 minutes, offering excellent transport links into the City and beyond.

Features

- 607 Square Feet
- One Bedroom
- Open plan reception
- Entry Phone System
- Easy Access To Canary Wharf
- Gated Development

Old School Square, London, E14



Ground Floor

Mezzanine

Total area (approx.): 56.4 sq. m (607.0 sq. ft)
(Excluding Void)