



**FORTUNE & COATES**

The People's Estate Agent

<https://www.fortuneandcoates.co.uk>



## 69 Bury Road, Harlow, CM17 0EE

Guide price £390,000

Guide price £390,000 - £410,000.

Fortune and Coates are delighted to welcome to the market this beautiful two double bedroom mid terrace family home situated in Bury Road, Old Harlow.

As you step inside, you are welcomed by a spacious dining room, offering ample room for a dining table, perfect for family meals or entertaining guests. This space flows seamlessly into the bright and airy lounge, creating a warm and inviting atmosphere.

The kitchen is designed in a classic shaker style, fitted with an integrated oven and hob along with space for a fridge and plumbing for a washing machine all complemented by a tasteful tiled splash back. With plenty of cupboard storage, the space is both practical and stylish, ideal for everyday cooking. French patio doors

Living room 11'9" x 11'8" (3.60 x 3.57)

Dining room 11'9" x 11'10" (3.60 x 3.62)

Kitchen 7'8" x 19'2" (2.35 x 5.85)

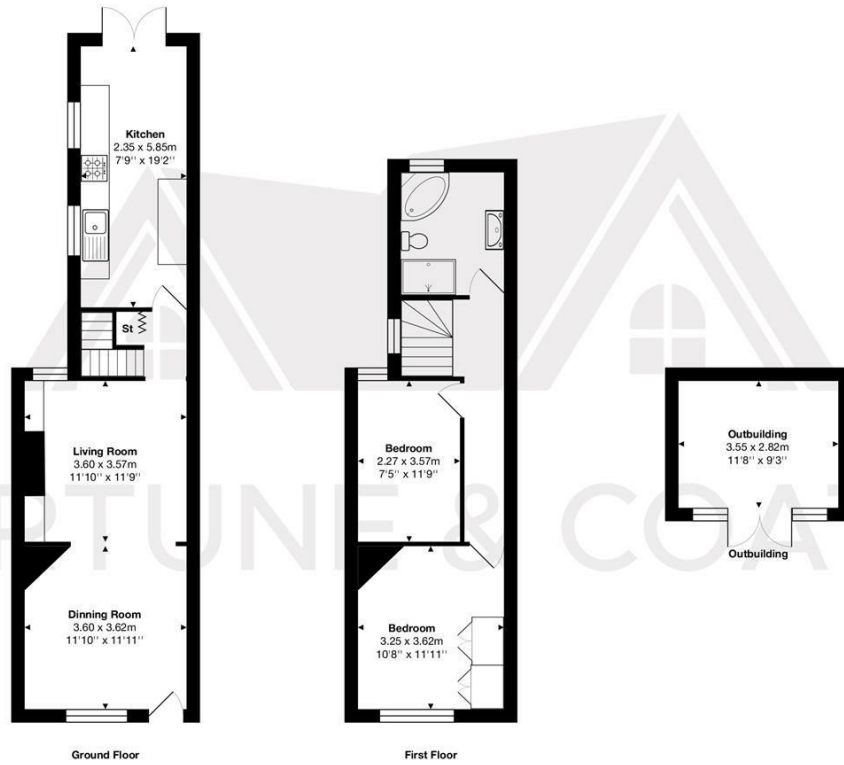
Bedroom 10'7" x 11'10" (3.25 x 3.62)

Bedroom 7'5" x 11'8" (2.27 x 3.57)

Outbuilding 11'7" x 9'3" (3.55 x 2.82)

AGENT NOTE: The information provided about this property does not constitute or form part of an offer or contract, nor may it be regarded as representations. All interested parties must verify accuracy and your solicitor must verify tenure/lease information, fixtures & fittings and, where the property has been extended/converted, planning/building regulation consents. All dimensions are approximate and quoted for guidance only as are floor plans which are not to scale, and their accuracy cannot be confirmed. Reference to appliances and/or services does not imply that they are necessarily in working order or fit for the purpose.

## Floor Plan

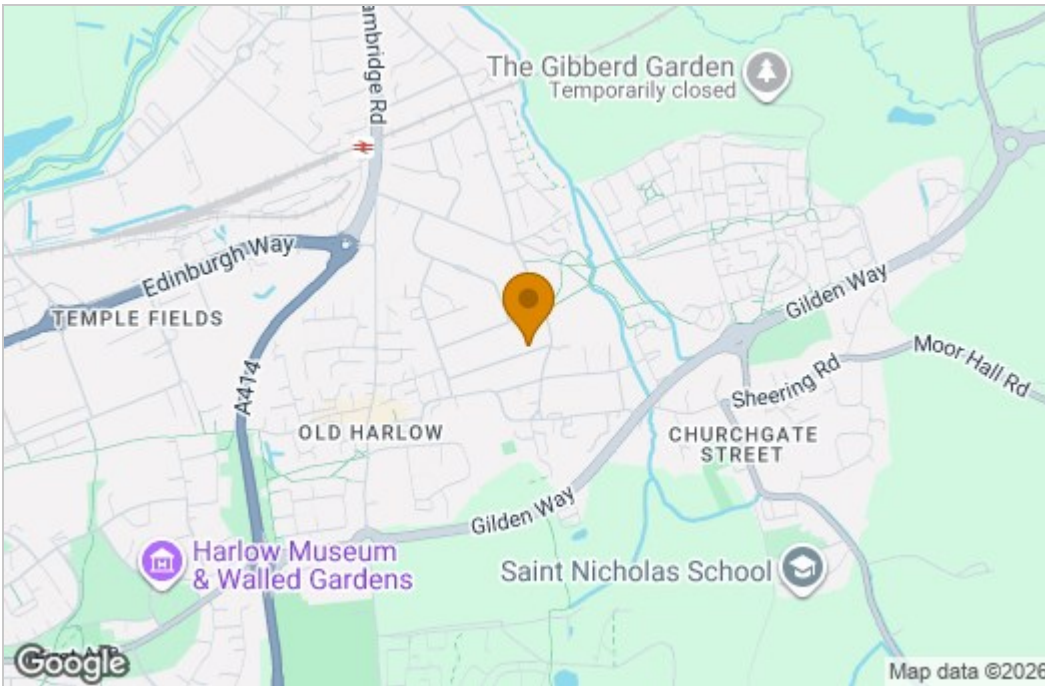


Total Area: approx. 88.2 m<sup>2</sup> ... 950 ft<sup>2</sup>

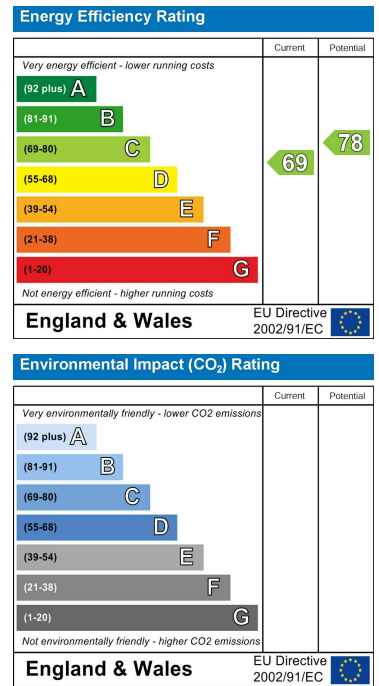
THE FLOORPLAN IS FOR ILLUSTRATIVE PURPOSES ONLY AND IS NOT TO SCALE. Measurements and features are approximate and may differ from the actual property. Verify all details independently; no liability is accepted for errors or omissions.

Property marketing provided by www.fotomarketing.co.uk

## Area Map



## Energy Efficiency Graph



These particulars, whilst believed to be accurate are set out as a general outline only for guidance and do not constitute any part of an offer or contract. Intending purchasers should not rely on them as statements of representation of fact, but must satisfy themselves by inspection or otherwise as to their accuracy. No person in this firm's employment has the authority to make or give any representation or warranty in respect of the property.