

## Goshawk Rise, Wymondham, NR18

£325,000

3 2 2



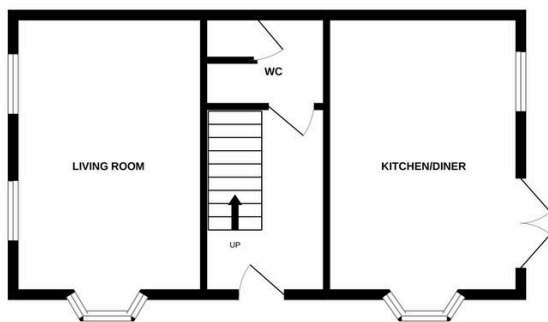
Moneyproperties are delighted to bring to market this well-presented three-bedroom link-detached family home occupying a large corner plot on a popular housing development in Wymondham. This fantastic property provides bright and spacious living throughout and comprises of a 16ft living room, 16ft kitchen/diner with French doors leading to the garden and a good-sized downstairs wc/utility. To the upstairs comes three well-proportioned bedrooms with built in wardrobes and an ensuite to bedroom one along with a family bathroom off the landing. Further benefits include a generous rear garden and carport providing parking for 2/3 cars.

**Tenure: Freehold EPC: B Council Tax: D**

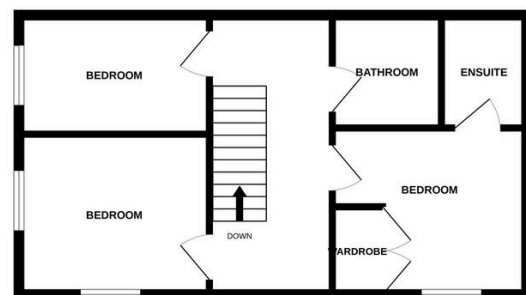
## Key Features

- Spacious three bedroom link-detached family home
- Built in wardrobes and ensuite to bedroom one
- Well-presented with modern interior throughout
- Good sized garden with carport off-road parking
- Purchased from new in 2020
- Three well-proportioned bedrooms
- Generous living room & kitchen/diner
- Occupying a generous corner plot
- Close proximity to the town centre and local amenities
- See our full online listing for further details including flood risk, broadband speed and other material information

GROUND FLOOR



1ST FLOOR



Whilst every attempt has been made to ensure the accuracy of the floorplan contained here, measurements of doors, windows, rooms and any other items are approximate and no responsibility is taken for any error, omission or mis-statement. This plan is for illustrative purposes only and should be used as such by any prospective purchaser. The services, systems and appliances shown have not been tested and no guarantee as to their operability or efficiency can be given.  
Made with Metropix ©2022