



Plough Road, SW11

£800,000

A large two bedroom, two bathroom apartment located on the eighth floor, with a dual aspect living space. The apartment features a fitted Italian kitchen equipped with Bosch appliances and a 4-in-1 tap that provides filtered drinking and boiling water.

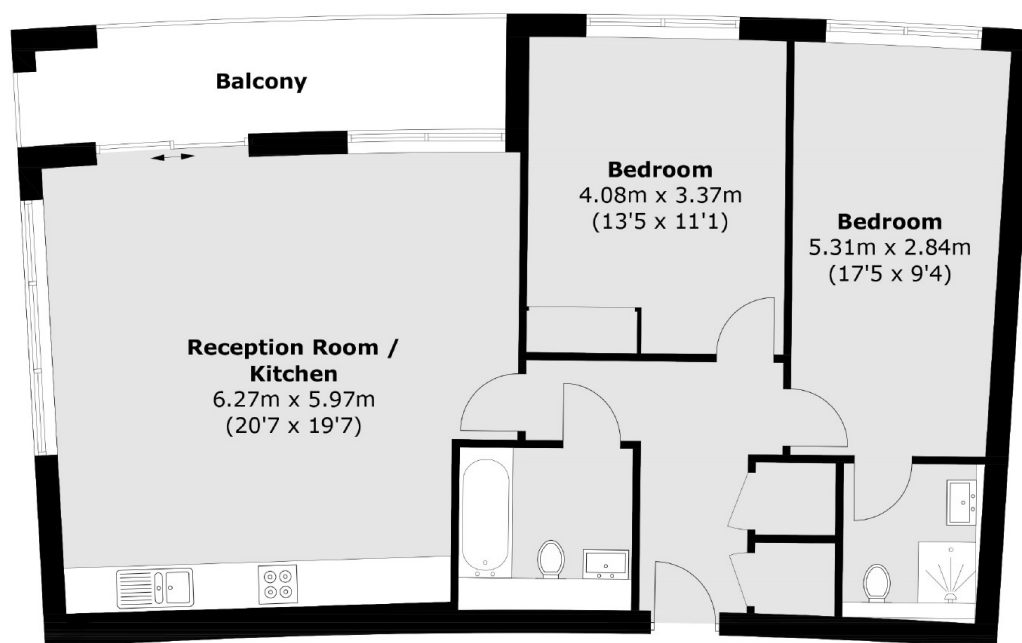
Developed by Thornsett, this exclusive collection of brand new penthouses reach new heights, elevate living standards and provide residents with exclusive, stunning views across the London horizon. Please note, some of the photographs shown may be of other apartments built by the same developer.

Located almost equidistant between Wandsworth Common, Clapham Common and Battersea Park, there is an abundance of green space close by. Transport links are excellent, with Clapham Junction around the corner to take you to the city in less than 10 minutes.

Features

- Daytime Concierge
- Two Double Bedrooms
- Two Bathrooms
- Italian Designed Kitchens
- Bosch Appliances
- Air Source Heat Pump
- 4-in-1 Hot / Cold Water Tap
- London Skyline Views

Plough Road, Battersea, SW11



Eighth Floor

Total area (approx.): 83.4 sq. m (897.7 sq. ft)
Balcony: 9.0 sq. m (96.9 sq. ft)