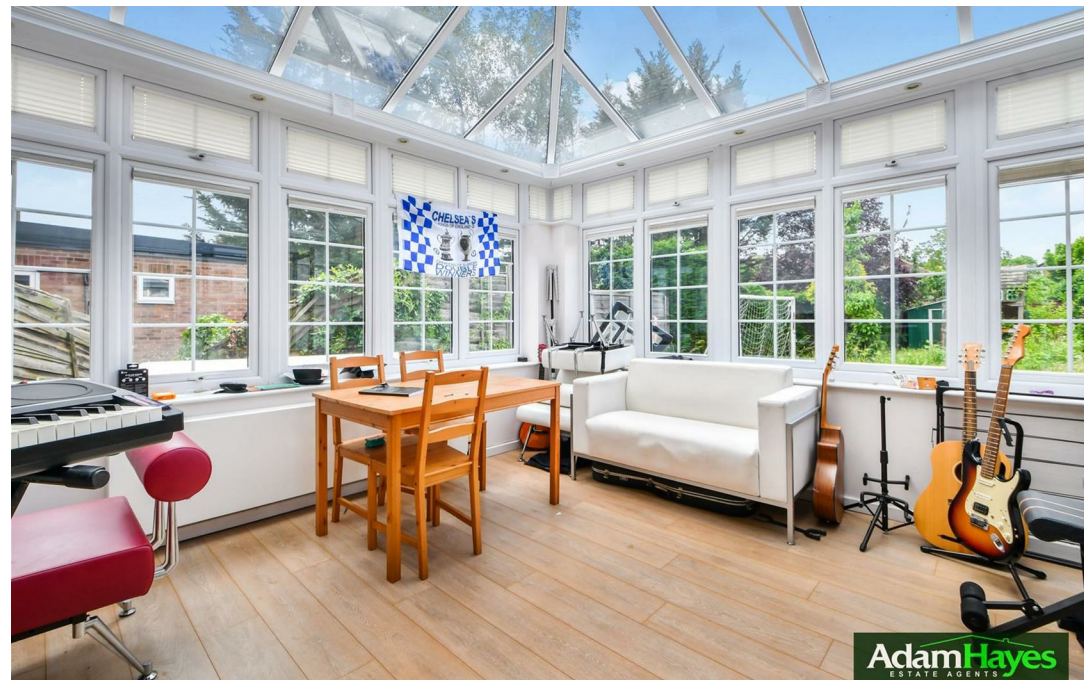




Edwyn Close, High Barnet, EN5

£650,000

 3 Bedrooms  1 Bathroom  1 Reception



Adam Hayes - North Finchley Office - Sales 365 Ballards Lane, North Finchley, London, N12 8LL  
Tel: 020 8445 4008 Email: [info@adam-hayes.co.uk](mailto:info@adam-hayes.co.uk) Web: [www.adam-hayes.co.uk](http://www.adam-hayes.co.uk)

# Edwyn Close, High Barnet, EN5

## £650,000

 3 Bedrooms  1 Bathrooms  1 Receptions

### Key Features

- Three Bedrooms
- Semi Detached
- Off Street Parking
- Conservatory
- Modern Bathroom
- Guest Cloakroom

### Other Information

Tenure: Freehold  
Council Tax Band: D



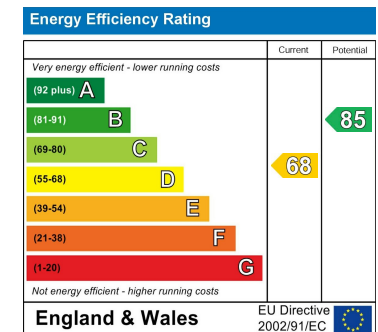
### Nearest Stations

High Barnet Station	0.9 miles
New Barnet Station (overground)	1.9 miles
Totteridge & Whetstone Station	1.9 miles

### Property Description

Situated in this quiet cul-de-sac in High Barnet is this well presented three bedroom semi-detached family home. Offering approximately 1,229 sq ft of accommodation, the property benefits from a spacious lounge/dining room, conservatory, fitted kitchen with utility area and a ground floor WC. Further advantages include double glazing throughout, a private rear garden and off street parking via the front driveway.

Conveniently located close to local amenities, transport links and well regarded schools, including Whittings Hill Primary School and Queen Elizabeth's Boys' School. To really appreciate the size, location and condition, an internal viewing is highly recommended via vendors sole agents Adam Hayes Estate Agents.



Adam Hayes - North Finchley Office - Sales 365 Ballards Lane, North Finchley, London, N12 8LL

Tel: 020 8445 4008 Email: info@adam-hayes.co.uk Web: www.adam-hayes.co.uk

**Approximate Gross Internal Area  
1229 sq ft - 114 sq m**



Although every attempt has been made to ensure accuracy, all measurements are approximate.  
This floorplan is for illustrative purposes only and not to scale.  
Measured in accordance with RICS Standards.

These particulars, whilst believed to be accurate, are set out as a general outline only for guidance and do not constitute any part of an offer or contract. Intending purchasers or prospective tenants should not rely on them as statements or representation of fact, but must satisfy themselves by inspection or otherwise as to their accuracy. We have not carried out a detailed survey, not tested the services, appliances and specific fittings. Room sizes should not be relied upon for carpets and furnishings. The measurements given are approximate. No person in this firm's employment has the authority to make or give any representation or warranty in respect of the property.