



FOR SALE  
hamlyn smith.  
01273 762222  
www.hamlynsmith.co.uk

ANGEL'S PLACE

P Mon - Fri  
10 am - 4 pm  
1 hour

Wivelsfield Parish

hamlyn smith.

High Street, Henfield, BN5 9DA

£1,100 Per

# hamlyn smith.



null Bedrooms



null Receptions



null Bathrooms

A rare opportunity to lease a good-sized retail / commercial unit on Henfield High Street, with the added benefit of a parking space. Available now.



- Newly Refurbished Retail / Office Space
- High Street Premises
- Available Now
- Parking
- A New Full Repairing And Insuring Lease Is Available On Terms To Be Agreed.
- Legal Costs - Each Party Is To Be Responsible For Their Legal Costs.







# hamlyn smith.

📍 50 Goldstone Villas, Hove, BN3 3RS

☎ 01273 762222

✉ hello@hamlynsmith.co.uk

Newly refurbished retail/office space available to let in Henfield High Street. Internally, you will find a good-sized retail premises with a kitchenette and W/C. There is also a store room located in the basement. At the side of the building, there is parking space.

Henfield is a popular and thriving village. The high street is busy and there is a strong sense of community, which the residents are keen to preserve. As well as the independent retailers on the high street, there is a Sainsbury's Local supermarket. Parking in the village is easy with two car parks, one on Cooper's Way and the other behind Henfield Library, as well as parking on the high street itself. The village also has three pubs, numerous cafés and its own school.

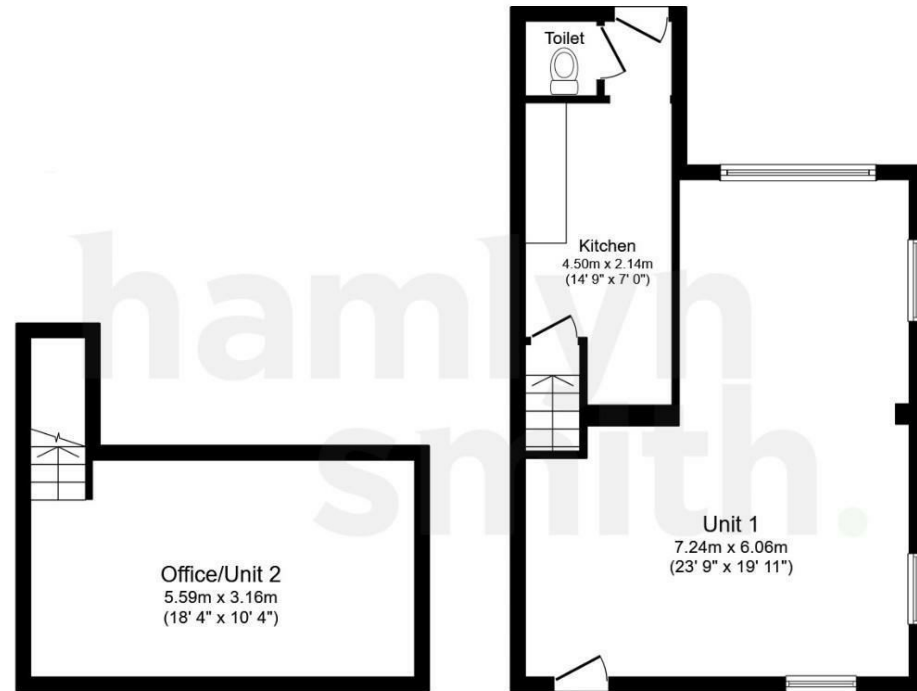
Conveniently positioned in the center of the High Street. Horsham and Brighton are within easy reach, situated approximately 15, 11 and 13 miles away respectively.

## Lease

A new full repairing and insuring lease is available on terms to be agreed.

## Legal Costs

Each party is to be responsible for their legal costs.



## Basement

Floor area 19.1 sq.m. (205 sq.ft.)

## Ground Floor

Floor area 45.4 sq.m. (489 sq.ft.)

**Total floor area: 64.5 sq.m. (694 sq.ft.)**

This floor plan is for illustrative purposes only. It is not drawn to scale. Any measurements, floor areas (including any total floor area), openings and orientations are approximate. No details are guaranteed, they cannot be relied upon for any purpose and do not form any part of any agreement. No liability is taken for any error, omission or misstatement. A party must rely upon its own inspection(s). Powered by [www.Propertybox.io](http://www.Propertybox.io)

