



RIDGWAY, SW19

£2,750 per month

Two bedrooms
Reception room
Two bathrooms
Underground parking
Communal gardens
Energy rating: c

@marshandparsons
marshandparsons.co.uk

MARSH &
PARSONS



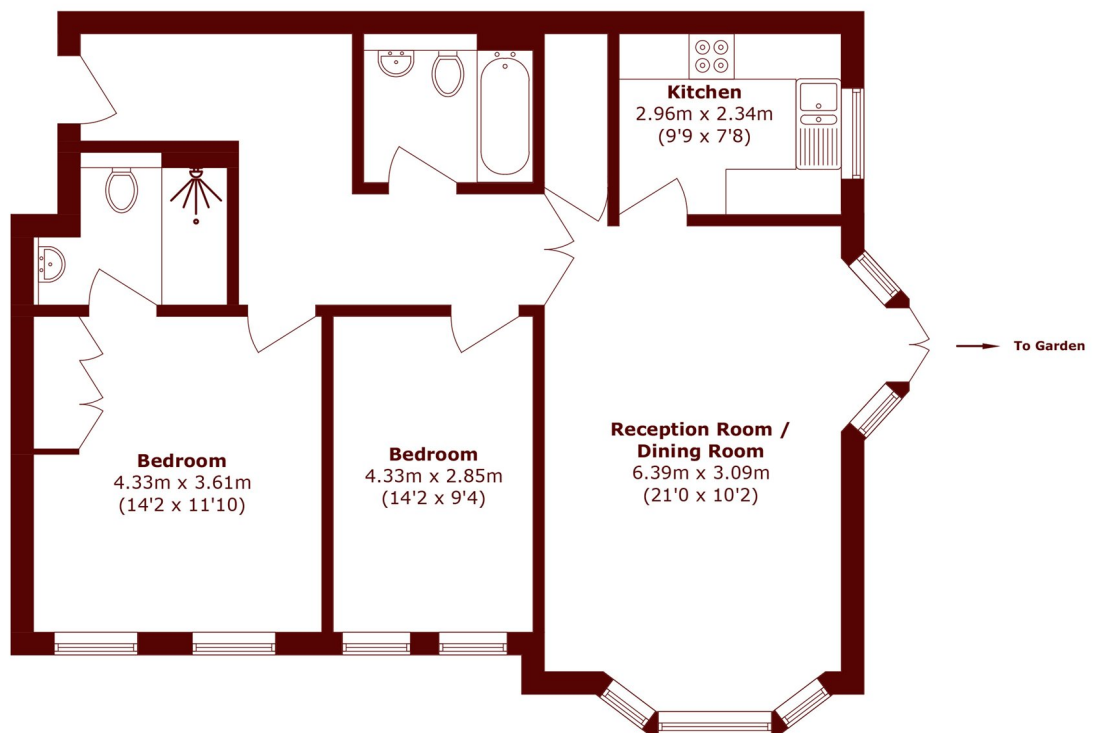
ABOUT THE PROPERTY

A newly decorated two bedroom ground floor apartment with direct access to communal gardens and secure underground parking. The property offers over 950 sq ft of living space with a reception room, separate kitchen, two double bedrooms and two bathrooms.

The property is located just over half a mile from Wimbledon Village.



STEP INSIDE RIDGWAY



Total area (approx.): 87.9 sq. m (946.1 sq. ft)

Wimbledon
020 8879 6661

Energy Rating: C We aim to make our particulars both accurate and reliable. However, they are not guaranteed; nor do they form part of an offer or contract. If you require clarification on any points then please contact us, especially if you're traveling some distance to view. Please note that appliances and heating systems have not been tested and therefore no warranties can be given as to their good working order

MARSH &
PARSONS