



**Noel Square, TW11**

**£1,299,950**

**Dexters**



## Noel Square, TW11

Located centrally in a highly regarded gated development this home is designed to a high specification and offers a high end finishes throughout with a lovely garden and gated parking.

Throughout this home there is a luxurious finish all to a high specification and the accommodation is in excess of 2300 sq ft. Beginning with the ground floor, there is a modern kitchen/breakfast dining room with contemporary units and built in appliances with bi-folding doors leading onto the garden. Completing the ground floor there is an office and cloakroom.

The first floor provides the living room, a large double bedroom and a bathroom along with fitted storage. To the second floor there is a family bathroom and two double bedrooms, one of which has a balcony over looking the development and courtyard. The top floor offers a stunning principle suite with a walk-in-wardrobe and bathroom.

Noel Square which is located just off Waldegrave Road which offers a great selection of shops, pubs and restaurants. Both Teddington High Street and Strawberry Hill village is approximately half a mile away offering train lines (0.4miles from Teddington Station) into London and the area is renowned for its excellent state and independent schools

### Features

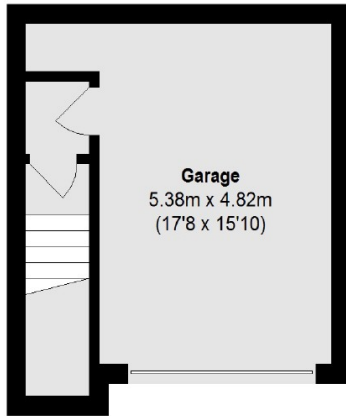
- 0.4 miles from Teddington Station
- Secure underground parking
- Garage
- Great School Catchment
- Over 2,200 sq ft.



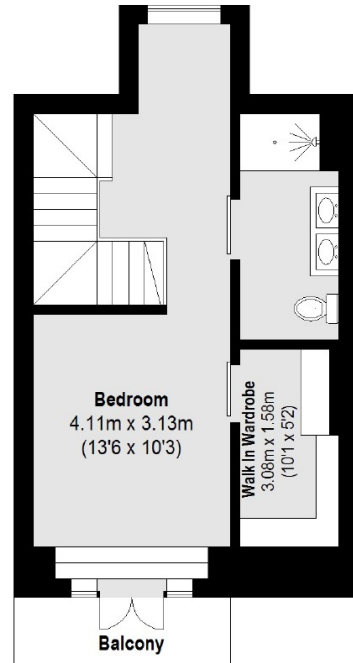




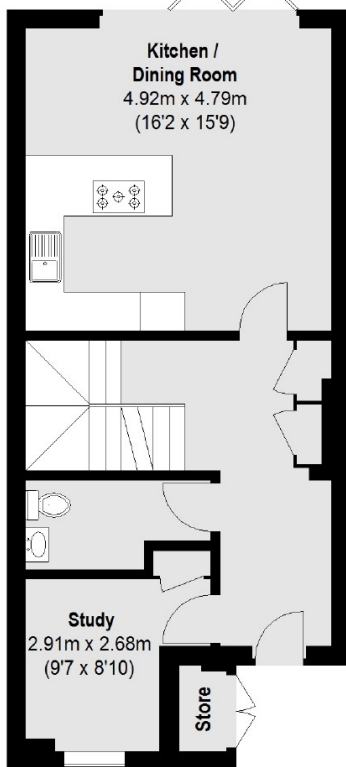
# Noel Square, Teddington, TW11



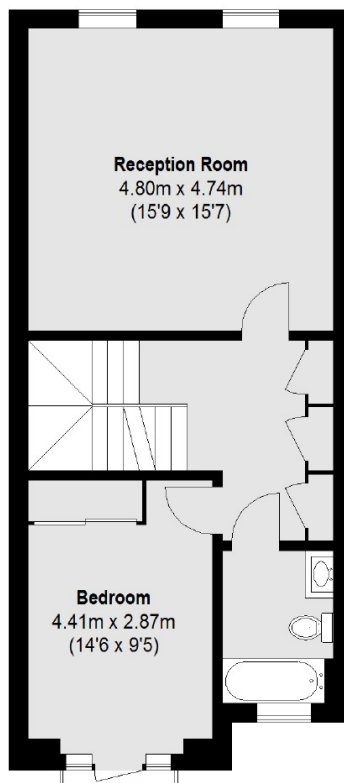
**Basement**  
To Garden



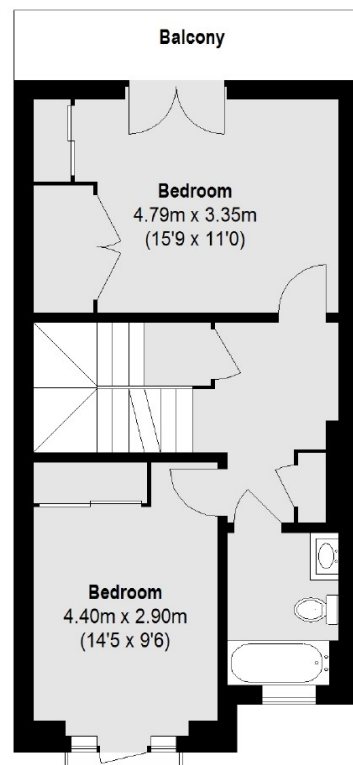
**Third Floor**



**Ground Floor**



**First Floor**



**Second Floor**

Total area (approx.): 214.85 sq. m (2312 Sq. ft)  
Store: 1.01 sq. m (11 Sq. ft)  
Balcony: 9.51 sq. m (102 Sq. ft)