



# Clive Court

Maida Vale, W9

£2,999 per month  
(£692.08 per week)

A one bedroom apartment set in this popular mansion block on Maida Vale. Comprising of new kitchen, large reception room, double bedroom and bathroom. The block also benefits from a 24 hour porter and close proximity to Maida Vale tube and the shops

**CHESTERTONS**



# Clive Court

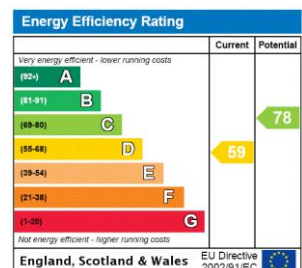
Maida Vale, W9

- Spacious Apartment
- 1 Bedroom
- 1 Bathroom
- Lift
- Porter



A one bedroom apartment set in this popular mansion block on Maida Vale. Comprising of new kitchen, large reception room, double bedroom and bathroom. The block also benefits from a 24 hour porter and close proximity to Maida Vale tube and shops.

**Minimum Term:** 12 months  
**Deposit Required:** 5 weeks  
**Local Authority:** City Of Westminster  
**Council Tax Band:** D  
**EPC Rating:** D  
**Unfurnished**



### Chestertons Little Venice Lettings

26 Clifton Road  
Maida Vale  
London  
W9 1SX  
littlevenicelettingsusers@chestertons.co.uk  
02072662369  
chestertons.co.uk

Additional tenant charges apply (fees apply to non-AST tenancies only)  
Tenancy Agreement Fee: £300  
References per Tenant/Guarantor: £60  
Inventory check (approx. £100 – £250 inc. VAT)  
chestertons.co.uk/property-to-rent/applicable-fees

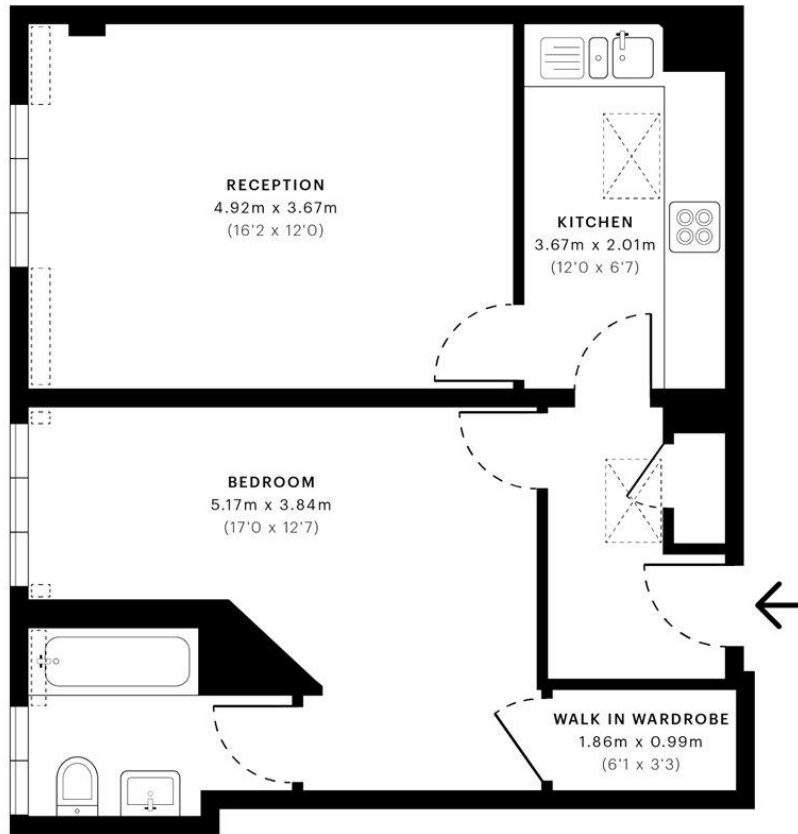


# Clive court, W9

CAPTURE DATE 05/08/2022 LASER SCAN POINTS 33,736,103

GROSS INTERNAL AREA

55.07 sqm / 592.77 sqft



— Eighth Floor

 **GROSS INTERNAL AREA (GIA)**  
The footprint of the property  
55.07 sqm / 592.77 sqft

 **NET INTERNAL AREA (NIA)**  
Excludes walls and external features  
Includes washrooms, restricted head height  
50.28 sqm / 541.21 sqft

 **EXTERNAL STRUCTURAL FEATURES**  
Balconies, terraces, verandas etc.  
0.00 sqm / 0.00 sqft

 **RESTRICTED HEAD HEIGHT**  
Limited use area under 1.5 m  
0.65 sqm / 7.00 sqft



Spec Verified floor plans are produced in accordance with Royal Institution of Chartered Surveyors' Property Measurement Standards. Plots and gardens are illustrative only and excluded from all area calculations. Due to rounding, numbers may not add up precisely. All measurements shown for the individual room lengths and widths are the maximum points of measurements captured in the scan.

IPMS 3B RESIDENTIAL 55.49 sqm / 597.29 sqft  
IPMS 3C RESIDENTIAL 51.13 sqm / 550.36 sqft

SPEC ID: 62ed1f20a7a3680e2ec97930

Chesterton UK Services Limited trading as Chestertons for themselves and for the vendor of this property whose agents they are, give notice that (i) these particulars do not constitute any part of an offer or contract, (ii) all statements contained within these particulars are made without responsibility on the part of Chestertons or the vendor, (iii) whilst made in good faith, none of the statements contained within these particulars are to be relied upon as a statement or representation of fact, (iv) any intending purchasers must satisfy themselves by inspection or otherwise as to the correctness of each of the statements contained within these particulars, (v) the vendor does not make or give either Chestertons or any person in their employment any authority to make or give representation or warranty whatsoever in relation to this property. Wide angle lenses may be used. ©Copyright Chestertons | Chesterton Global Ltd | Registered Office 5th Floor, The Lantern, 75 Hampstead Road, London, NW1 2PL Registered Company Number 05334580.



This paper is 100% recyclable