

## Bridgewater Avenue, SW6

£980 Per week

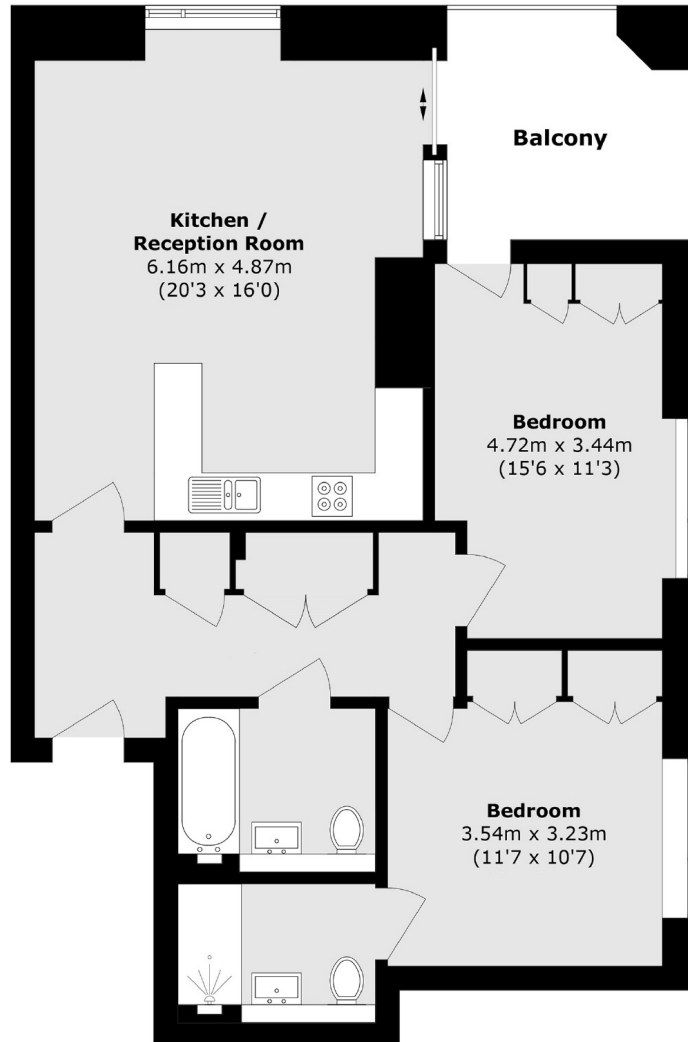
A new two double bedroom, two bathroom furnished apartment finished to a very high specification, located in the prestigious Chelsea Creek development.

Chelsea Creek is ideally located for the local amenities of Imperial Wharf while there is a wide range of shops, bars and boutiques available on King's Road.

### Features

- Two Double Bedrooms
- Two Bathrooms
- Gym And Pool Access
- Private Balcony
- 24 Hour Concierge
- Imperial Wharf Station

# Bridgewater Avenue, London, SW6



Total area (approx.): 81.8 sq. m (880.5 sq. ft)

Balcony area (approx.): 11.5 sq. m (123.8 sq. ft)