



ROSS BURBIDGE

exp

@ ross.burbidge@exp.uk.com

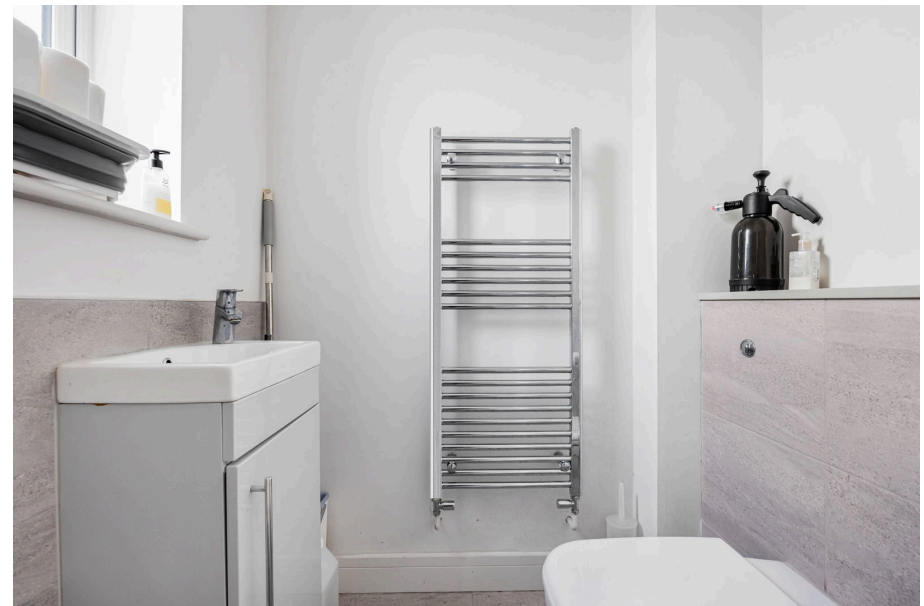
🌐 rossburbidge.exp.uk.com

☎ 07792 512 628

Grove Mews Grove Street, Cheltenham, GL50

£340,000

🛏 2 🚿 1 🛋 1



Tucked away in a private mews just a short walk from Cheltenham town centre, this three-bedroom end terrace home offers modern, low-maintenance living with open plan design, underfloor heating, a private courtyard garden and an integral carport.

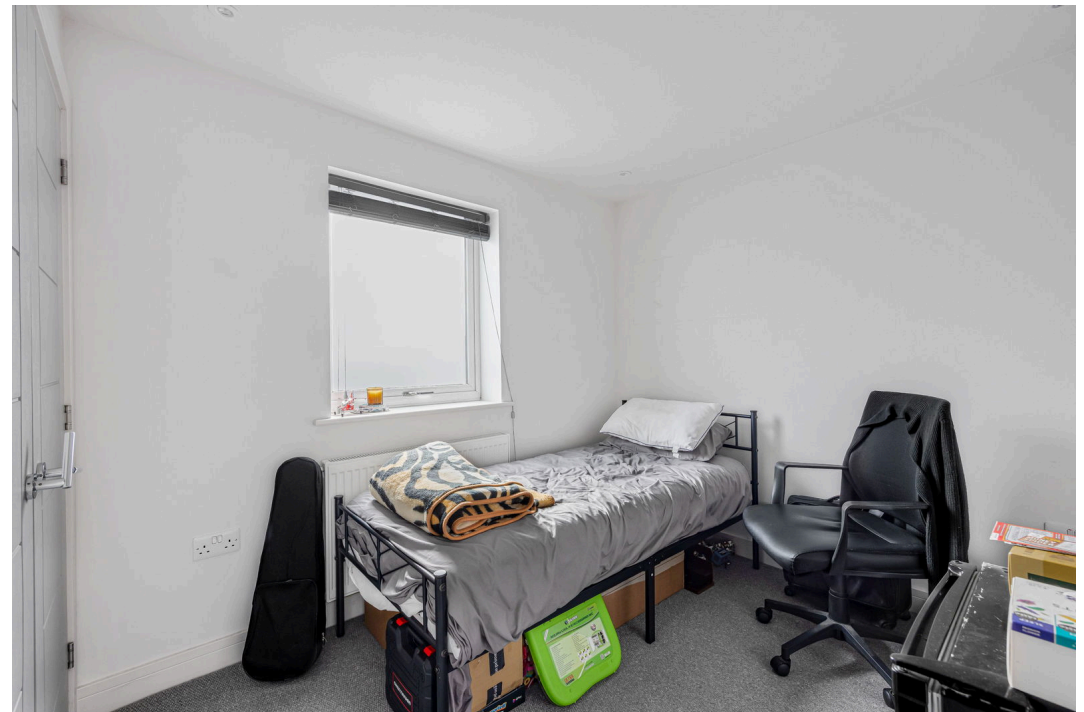
The ground floor is centred around a bright open plan living, kitchen and dining space, with wood-effect flooring, a sleek fitted kitchen with integrated oven and hob, and French doors opening to the garden. A glass-panelled staircase adds a contemporary touch.

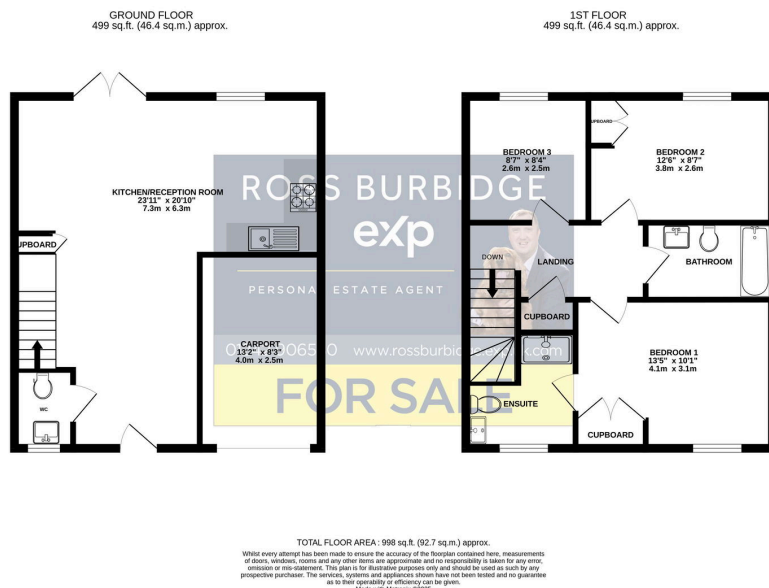
Upstairs, the main bedroom features built-in wardrobes and a stylish en suite shower room. A second double bedroom and a versatile third bedroom or study are served by a modern family bathroom with bath and overhead shower.

Outside, the enclosed courtyard garden is fully paved for easy upkeep, with raised boundary walls and side access. The integral carport provides sheltered off-road parking directly by the entrance.

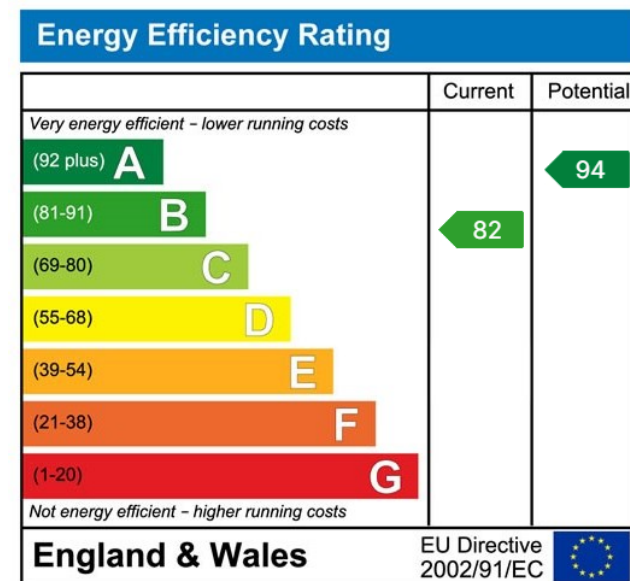
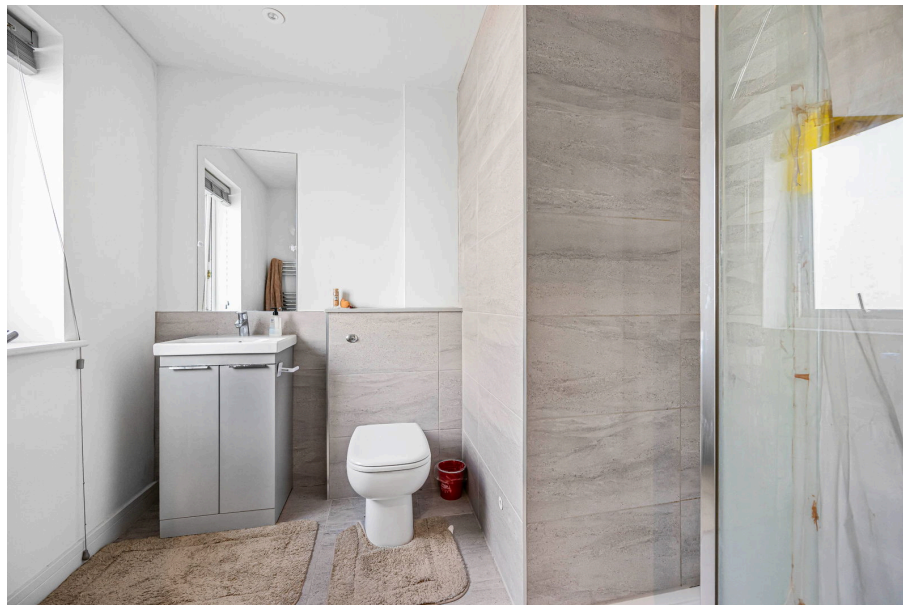
Grove Mews is a private modern development moments from Cheltenham town centre, close to Waitrose, the Honeybourne Line and Cheltenham Spa station, with shops, cafés and leisure facilities all within walking distance.

Tenure: Freehold
Council Tax Band: C





- Three Bedrooms
- End-Terraced
- Please Quote RB1393
- Moments From Cheltenham Town Centre
- Carport Parking Space
- Courtyard Garden
- Bright Open-Plan Living
- Council Tax Band: C
- Stylish En-Suite Shower Room



eXp World UK Limited is a registered company at c/o Corporation Service Company (UK) Limited, 114 St. Martin's Lane London WC2N 4BE.

Registered company number is 12016573. VAT Registration Number is 327 4120 29