

1A Old Haymarket 73-89 Victoria Street, Liverpool, L1 6AF
Tel: 0151 305 2577
Email: liverpoolsales@ascendproperties.com
www.ascendproperties.com

Ascend

Built on higher standards



Longmoor Lane, Liverpool

£760 PCM

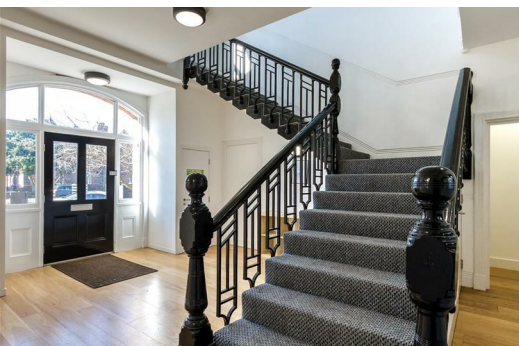
Fancy living in a slice of Liverpool's history just 20 minutes away from the city centre? Don't miss out on this incredibly unique and brand new development in Liverpool. Situated within a beautiful original building, this development of 1, 2 and 3 bedroom apartments has been given a breath of new life.

The eye-catching exterior is matched by the equally stunning interior and inside you're instantly greeted by a vast entrance hall that features a grand staircase leading to the upper floors.

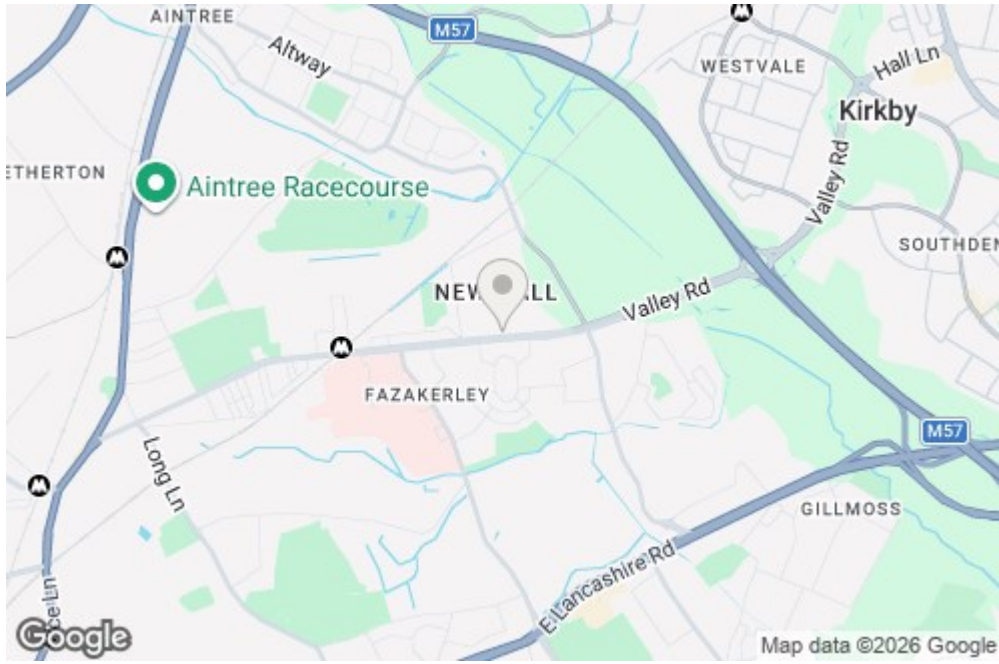
Venture further and you'll discover a bright, airy interior, complete with high ceilings, a neutral design and sleek fixtures and fittings throughout. Here you'll be able to kick back and relax in rooms which boast an incredible amount of space. You can also enjoy a sleek kitchen which comes complete with integrated appliances, a modern tiled bathroom and a plush bedroom which is flooded with natural light.

Situated just minutes away from Aintree racecourse and hospital – these apartments are ideal for those looking for a quiet retreat with easy access to the action of Liverpool city centre. With several parks, schools and amenities just a stone's throw away, you'll have everything you could possibly need within easy reach.

Interested in taking a closer look? Make sure to give our team a call today. Images are for marketing purposes only.
Available 1st April 2026. 12 month tenancy. Council Tax Band A. Deposit £870.



5, 6 Clock Tower Longmoor Lane, Liverpool, Merseyside, L10 1LD



| Energy Efficiency Rating | | Environmental Impact (CO ₂) Rating | |
|--------------------------|------------|--|------------|
| Current | Potential | Current | Potential |
| 100-109 (A) | 92-100 (A) | 100-109 (A) | 92-100 (A) |
| 81-100 (B) | 73-91 (B) | 81-100 (B) | 73-91 (B) |
| 62-80 (C) | 54-72 (C) | 62-80 (C) | 54-72 (C) |
| 43-61 (D) | 35-53 (D) | 43-61 (D) | 35-53 (D) |
| 24-42 (E) | 16-34 (E) | 24-42 (E) | 16-34 (E) |
| 5-23 (F) | - | 5-23 (F) | - |
| 1-4 (G) | - | 1-4 (G) | - |