



Lampton Road, TW3

£1,650 Per calendar month

A beautifully furnished modern one bedroom apartment offering over 500 sq ft of stylish living space within the sought-after Whitelocke House development. Featuring bright interiors, a contemporary finish, open-plan living, and excellent natural light throughout.

Whitelocke House is ideally located just three minutes from Hounslow Central station, offering direct Piccadilly Line access to Heathrow and central London, while the nearby M4 provides excellent road connections to the South West and M25.

Features

- One Bedroom
- High Quality Furnishings
- Excellent Natural Light
- Over 500 Sq.Ft
- Sought After Development
- Central Location



Lampton Road, TW3

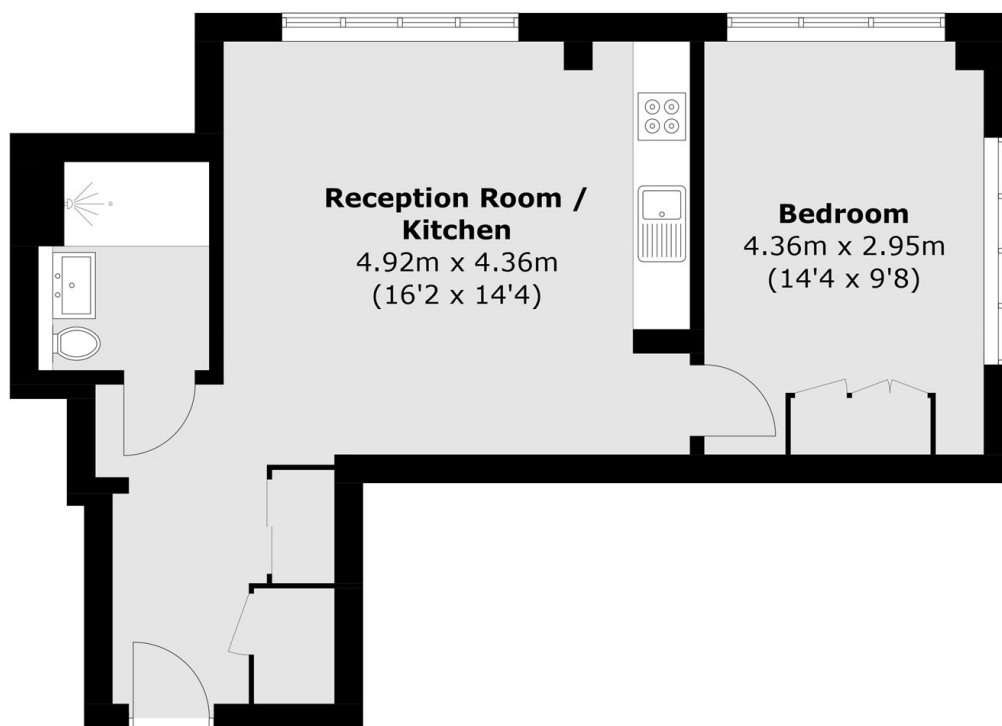
Beautifully furnished to a high standard, this modern one bedroom apartment offers over 500 sq ft of stylish living space. The bright open-plan reception room features windows, finishes, furnishings, and a fitted kitchen for entertaining.

The spacious bedroom provides a calm and inviting retreat, complete with large windows, tasteful décor, and excellent natural light. A modern shower room showcases contemporary tiling, quality fixtures, storage solutions, and a sophisticated finish throughout.

Set within the desirable Whitelocke House development, the property benefits from a well-maintained modern building and impressive natural light throughout. Ideal for professionals, this furnished apartment combines comfort, style, and practicality within a contemporary layout.



Lampton Road,
Hounslow, TW3



Total area (approx.): 46.8 sq. m (503.7 sq. ft)

Dexters

Isleworth
568 London Road
Isleworth
TW7 4EP
Lettings
020 8560 1717

Energy Rating: . We aim to make our particulars both accurate and reliable. However they are not guaranteed; nor do they form part of an offer or contract. If you require clarification on any points then please contact us, especially if you're traveling some distance to view. Please note that appliances and heating systems have not been tested and therefore no warranties can be given as to their good working order.

 **RICS** | Regulated
Estate Agent
and Letting Agent

dexters.co.uk