



## Windmill Road, TW16

£1,995 Per calendar month

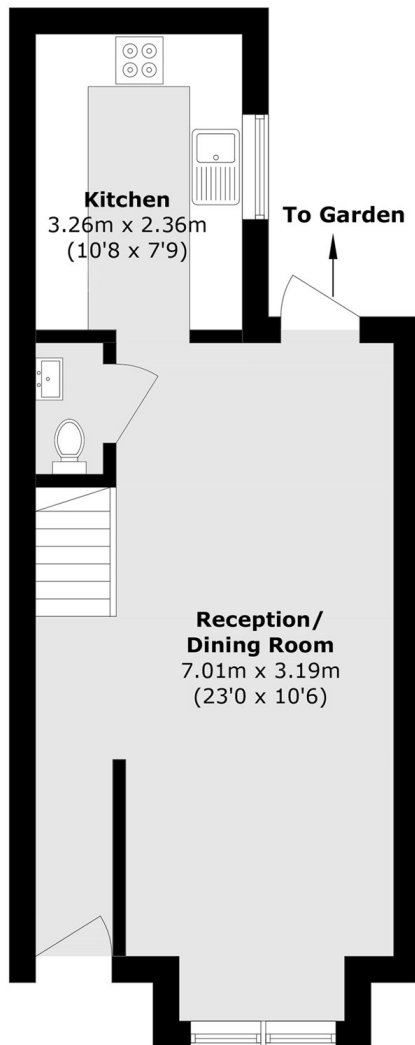
A beautifully presented two double bedroom family home, ideally situated in a sought-after part of Sunbury with excellent local amenities close by. The property offers stylish modern living with a spacious reception room leading onto a private garden.

Located only 0.7 Miles to Sunbury Train Station and within walking distance to local amenities.

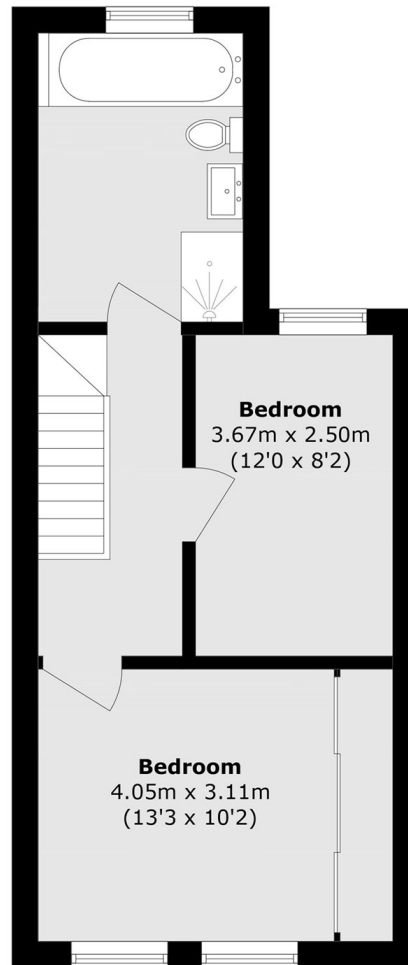
### Features

- Modern finish
- Two Double Bedrooms
- Three Piece Bathroom
- Private Garden
- Open plan living space
- Fitted Wardrobes

# Windmill Road, Sunbury-On-Thames, TW16



**Ground Floor**



**First Floor**

Total area (approx.): 74.5 sq. m (801.9 sq. ft)