



Huthill Lane, Great Wyrley, WS6 6PB

Offers Over £340,000

Welcome to Huthill Lane and this exceptionally well-presented property nestled away in a sought-after area of Great Wyrley, offering scenic walks, excellent local amenities and regular transport links.

A front porch leads into the stylish front living room with a log burner, space for a dining table, a bespoke staircase and solid oak flooring.

The well-equipped quality kitchen comes with ample worktop and unit space and a side door leads to the rear garden and garage.

The ground floor has been re-designed to offer a rear sitting room and an orangery overlooking the garden. This peaceful and cosy area is ideal for relaxing and perfect for hosting family get togethers or entertaining guests. A double bedroom and a modern shower room complete the ground floor layout.

The first-floor benefits from an impressive main bedroom with a walk-in wardrobe and a luxurious Jack & Jill en-suite bathroom. A further bedroom is ideal for guests and grandchildren.

Externally the property offers a sizeable driveway offering parking for multiple vehicles and motorhomes. A secure side gate leads to a detached single garage and an enclosed rear garden with a paved patio area ideal for outside dining, a lawn area and a paved private area housing a hot tub (available by separate negotiation).

This beautifully presented and impeccably maintained property is not one to be missed!

Call Paul Carr, Great Wyrley today!



Porch

Living Room

4.82m (15'10") x 4.18m (13'9")

Kitchen

4.83m (15'10") x 2.00m (6'7")

Inner Hallway

Rear Lounge/Sitting Room

4.81m (15'9") max x 3.12m (10'3")

Orangery

2.23m (7'4") x 2.93 (9'7")

Bedroom 3

3.00m (9'10") x 2.83m (9'3")

Ground Floor Bathroom

First Floor Landing

Bedroom 1

6.11m (20'1") max x 3.72m (12'2")

Walk-in Wardrobe

Jack and Jill En-suite

Bedroom 2

3.57m (11'9") x 3.09m (10'2")

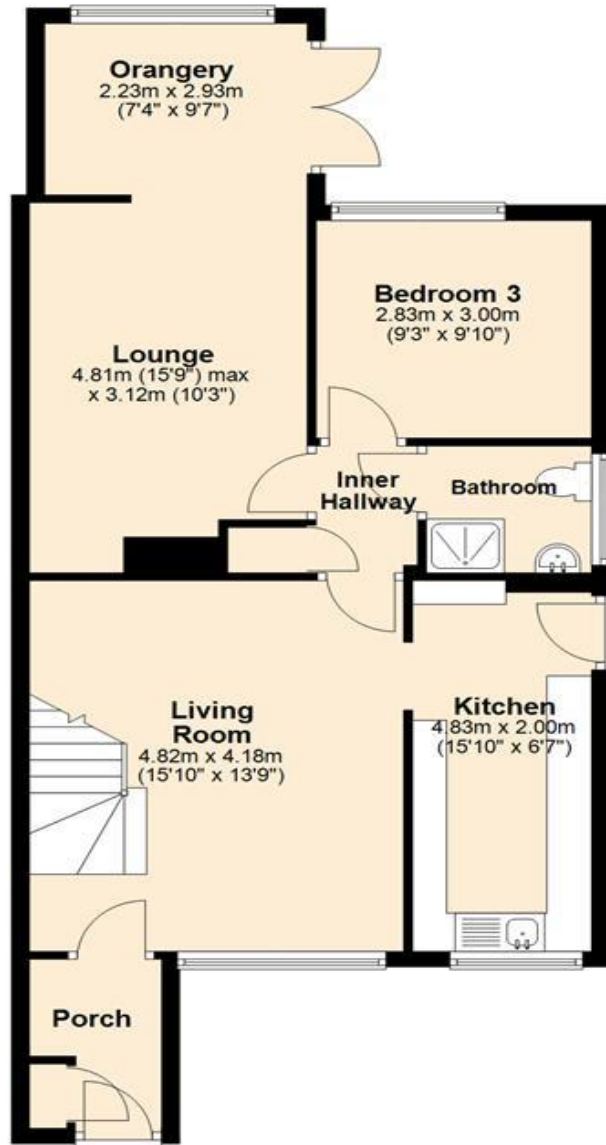




Floor Plan

This floor plan is not drawn to scale and is for illustration purposes only

Ground Floor



First Floor







Agent's Note:

Every care has been taken with the preparation of these Sales Particulars but they are for general guidance only and complete accuracy cannot be guaranteed. If there is any point which is of particular importance, professional verification should be sought. The mention of any fixtures, fittings and/or appliances does not imply they are in full efficient working order as they have not been tested. All dimensions are approximate. Photographs are reproduced for general information and it cannot be inferred that any item shown is included in the sale. These Sales Particulars do not constitute a contract or part of a contract.
Came on the market: 25th September 2025