



Jordan fishwick

Apt 1009 18 Leftbank, Spinningfields, M3
£1,800 Per Calendar Month



18 Leftbank Manchester M3 3AL

£1,800 Per Calendar Month



The Property

Available Early April. Jordan Fishwick are delighted to present this tenth floor dual aspect apartment in this popular Spinningfields Development. Benefiting from high ceilings throughout, accommodation briefly comprises large entrance hall with two well-proportioned double bedrooms off and recently updated, high specification family bathroom. Both bedrooms have built-in wardrobes and there is a stylish en-suite shower room off the master. Extremely large open-plan lounge and kitchen with integrated appliances including dishwasher and fridge/ freezer. Floor to ceiling windows leading to one of three balconies. Furnished. 24 Hour Concierge. Air Conditioning. Secure Underground Parking. Tax Band E. EPC Rating C.


PLEASE NOTE - THERE ARE BUILDING WORKS OCCURING ON THE BUILDING TILL FURTHER UPDATES. BUT THE PROPERTY ITSELF IS NOT AFFECTED BY ANY MAINTENANCE

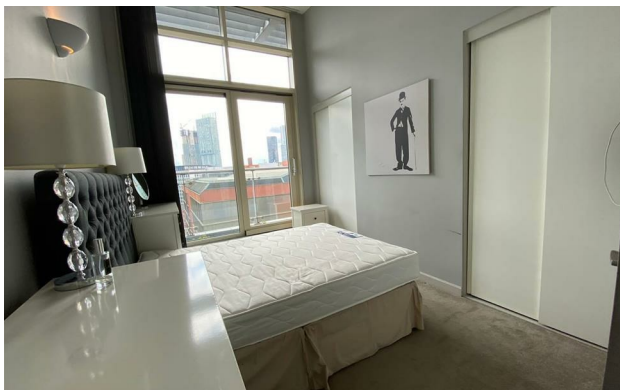
VIDEO/PHOTOS NOT ACCEPTED - PLEASE CALL TO BOOK A VIEWING



- Available Early April
- 10th Floor Apartment
- Two Bedrooms - Furnished
- Dual Aspect - Two Balconies
- 24 Hour Concierge
- Tax Band E
- EPC Rating C
- Air Conditioning
- Secure Parking



Energy Efficiency Rating		
	Current	Potential
Very energy efficient - lower running costs		
(92 plus) A		
(81-91) B		
(69-80) C	71	71
(55-68) D		
(39-54) E		
(21-38) F		
(1-20) G		
Not energy efficient - higher running costs		
England & Wales	EU Directive 2002/91/EC 	





These particulars are believed to be accurate but they are not guaranteed and do not form a contract. Neither Jordan Fishwick nor the vendor or lessor accept any responsibility in respect of these particulars, which are not intended to be statements or representations of fact and any intending purchaser or lessee must satisfy himself by inspection or otherwise as to the correctness of each of the statements contained in these particulars. Any floorplans on this brochure are for illustrative purposes only and are not necessarily to scale.

Offices at: Offices at Chorlton, Didsbury, Disley, Hale, Glossop, Macclesfield, Manchester Deansgate, Manchester Whitworth Street, New Mills, Sale, Wilmslow and Withington