

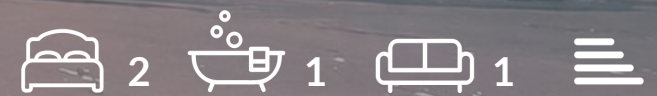


OAKFIELD



West Parade, Bexhill, TN39 3HR

Price Guide £250,000



West Parade, Bexhill, TN39 3HR

A bright and spacious two-bedroom third-floor apartment occupying a highly desirable seafront position on West Parade, Bexhill-on-Sea. Boasting breathtaking sea views towards Beachy Head, the De La Warr Pavilion, and across the English Channel, this superb apartment offers an enviable coastal lifestyle.

The accommodation comprises a generous living space filled with natural light, a kitchen with access to a south-facing balcony, two good-sized double bedrooms, and a recently fitted contemporary bathroom suite. Further benefits include warm air heating and well-proportioned rooms throughout.

Ideally situated within walking distance of Bexhill town centre, residents can enjoy an excellent selection of shops, cafés, bars, and restaurants, whilst the nearby De La Warr Pavilion provides a year-round programme of cultural events and exhibitions. Bexhill railway station is also within easy reach, offering convenient direct services to London, Brighton, and Ashford International.

Whether you are seeking a permanent home, a weekend coastal retreat, or an investment opportunity, this exceptional apartment combines spacious accommodation, spectacular views, and a fantastic location.





Living Room

17'8" x 14'7" (5.38m x 4.45m)

Kitchen

10'10" x 7'10" (3.30m x 2.39m)

Bedroom One

14'3" x 11'2" (4.34m x 3.40m)

Bedroom Two

14'2" x 10'2" (4.32m x 3.10m)

Bathroom

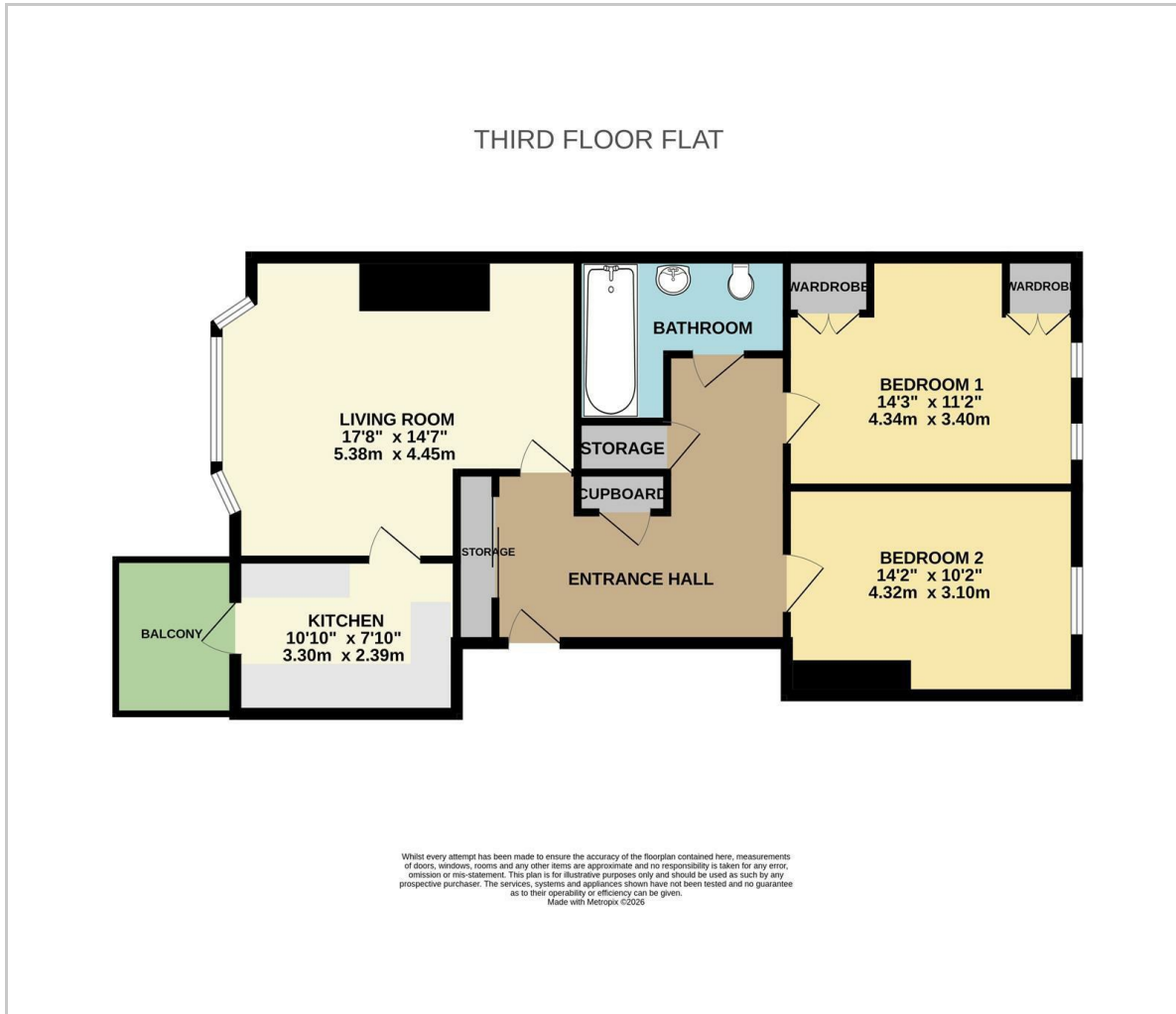
Council Tax Band A - £1,800.63 Per Annum

Lease Information

The seller advises that the property is offered as leasehold and has approximately 949 years remaining from 1975 on the lease. The service charge is £150.00 every month and there is a ground rent of £125 per annum, which is split twice a year. The agent has not seen sight of confirmation documents and therefore the buyer is advised to obtain verification from their solicitor or surveyor.



Floor Plan



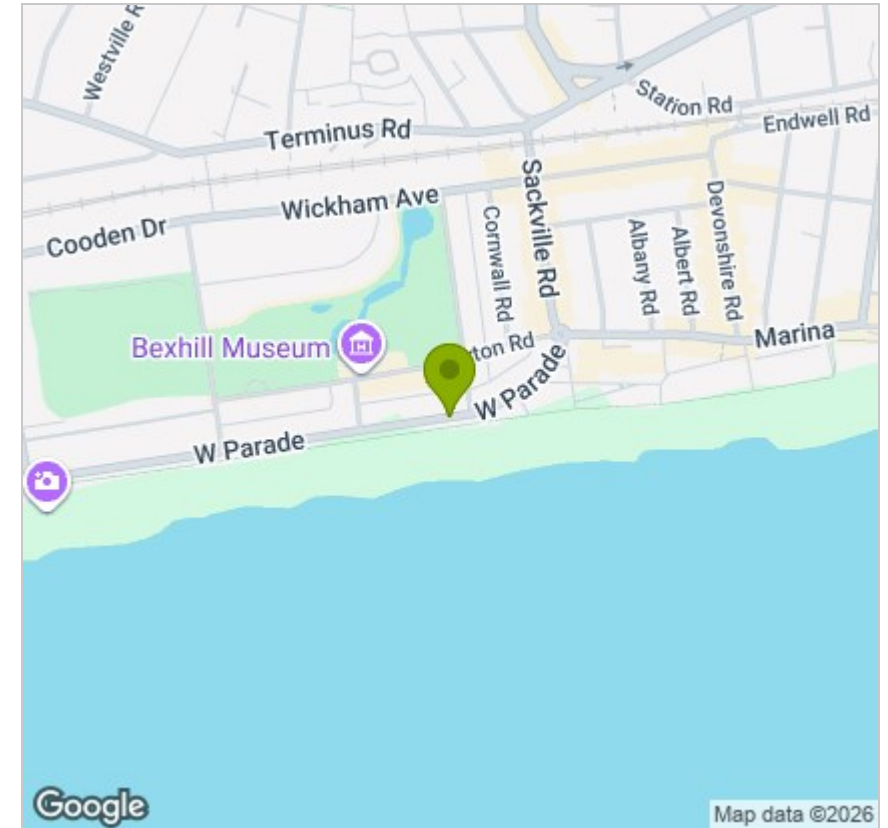
Viewing

Please contact us on 01424 224700 if you wish to arrange a viewing appointment for this property or require further information.

These particulars, whilst believed to be accurate are set out as a general outline only for guidance and do not constitute any part of an offer or contract. Intending purchasers should not rely on them as statements of representation of fact, but must satisfy themselves by inspection or otherwise as to their accuracy. No person in this firm's employment has the authority to make or give any representation or warranty in respect of the property.

12 Sackville Road, Bexhill on sea, East Sussex, TN39 3JL
Bexhill@oakfieldproperty.co.uk

Area Map



Energy Efficiency Graph

Energy Efficiency Rating		
	Current	Potential
Very energy efficient - lower running costs		
(92 plus) A		
(81-91) B		
(69-80) C		
(55-68) D		
(39-54) E		
(21-38) F		
(11-20) G		
Not energy efficient - higher running costs		
England & Wales	EU Directive 2002/91/EC	

01424 224700
www.oakfieldproperty.co.uk