



The Meer, Fleckney

Offers in Excess of £310,000 Freehold

Well-presented detached bungalow in Fleckney featuring spacious single-level living, conservatory, mature rear garden, driveway, garage, and two versatile bedrooms close to local amenities.

Council Tax band: C

Tenure: Freehold

EPC Energy Efficiency Rating:TBC



Knightsbridge
Estate Agents

0116 288 4888





Entrance Porch / Hall

Entered via a double-glazed door, with dado rail, door providing access to the lounge, and a radiator.

Lounge

15' 9" x 17' 7" (4.80m x 5.37m)

(minimising to 3.98m) Light and airy, cosy living room boasting plenty of natural light coming through the double-glazed window to the front elevation. Also featuring a living flame gas fire with surround and hearth, coving to the ceiling, dado rail, television point, and a radiator.

Kitchen

10' 4" x 6' 11" (3.15m x 2.10m)

Stylish kitchen having plenty of natural light coming through the double-glazed window to the rear elevation, also having a double-glazed door providing access to the side pathway to the garden. There is a range of stylish grey base and wall units accompanied by granite-effect roll-edge laminated work surfaces incorporating a sink drainer and mixer tap. Integrated appliances include an inset four-ring ceramic electric hob and oven with an extraction hood over. There is plumbing for a washing machine and plumbing for a dishwasher.



Bedroom One

16' 4" x 8' 6" (4.97m x 2.58m)

The principal bedroom boasts plenty of natural light coming through the double-glazed window to the front elevation, also featuring a range of built-in wardrobes, coving to the ceiling, a television point, and a radiator.

Bedroom Two / Dining Room

11' 9" x 7' 3" (3.58m x 2.22m)

Beautifully decorated bedroom, which is currently used as a dining room, having natural light flowing through the double-glazed window to the side elevation and a radiator, together with double doors providing access to the double-glazed conservatory.

Double-Glazed Conservatory

11' 3" x 10' 8" (3.44m x 3.25m)

Boasting plenty of natural light flowing through the double-glazed windows to the rear and side elevations, in addition to having double-glazed French doors providing views and access to the rear garden, ceramic tiled flooring, and a television point.

Shower Room

7' 1" x 5' 4" (2.17m x 1.63m)

Stylishly appointed three-piece shower room having natural light flowing through the double-glazed window to the rear elevation, a double shower tray with a shower screen and shower head over, a low-level WC, a wash hand basin with under-basin storage, a wall-mounted mirror, fully tiled walls, and a radiator.

Rear Garden

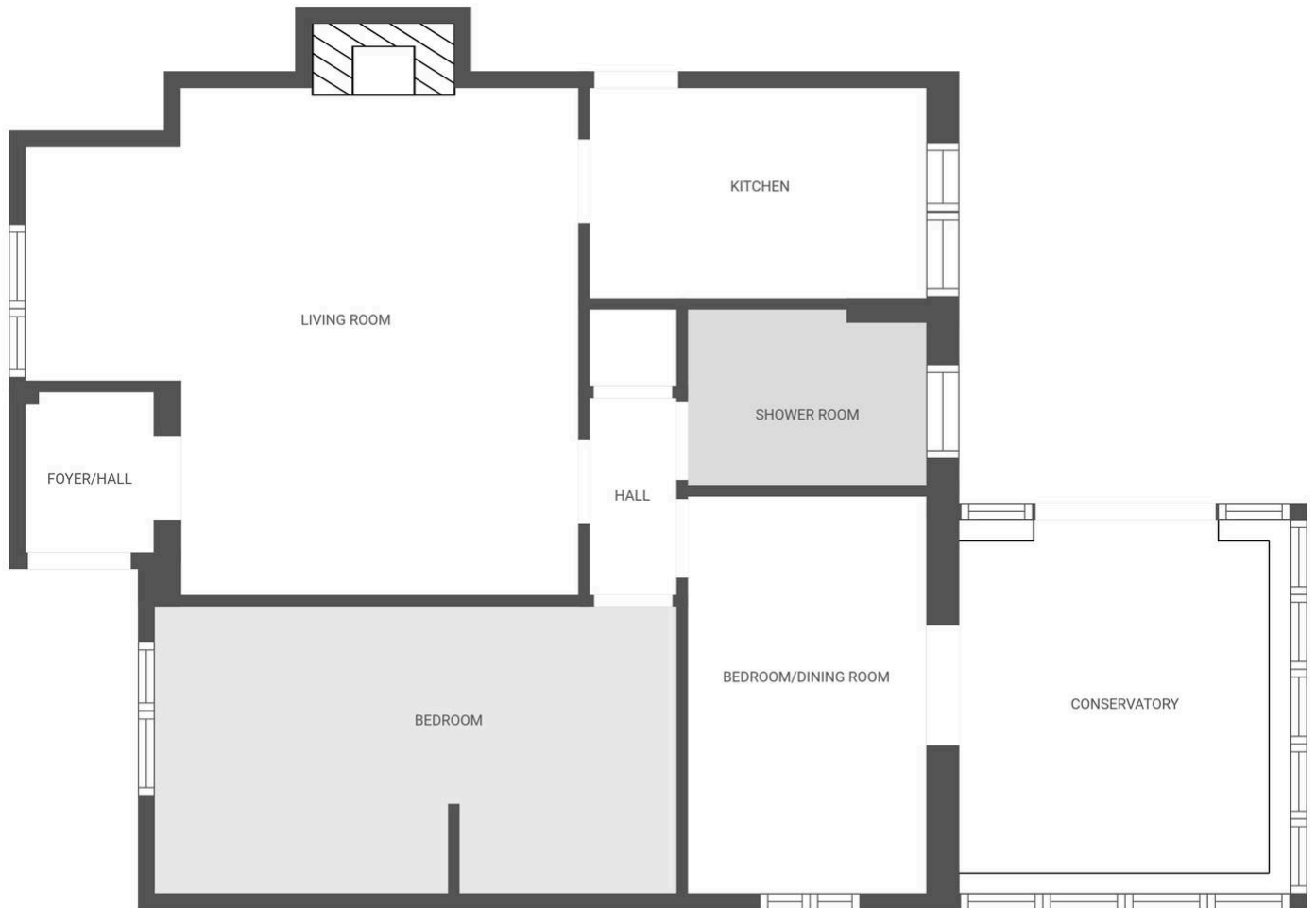
Beautifully maintained, having a patio seating area, well-maintained lawn, water feature, mature and established flower beds, and well-maintained borders.

Driveway

Tarmac driveway that can probably accommodate two vehicles.

Garage

There is an up-and-over door to the front elevation.



FLOOR PLAN CREATED BY CUBICASA APP. MEASUREMENTS DEEMED HIGHLY RELIABLE BUT NOT GUARANTEED.

We'll keep you moving...



We must inform all prospective purchasers that the measurements are taken by an electronic tape and are provided as a guide only and they should not be used as accurate measurements. We have not tested any mains services, gas or electric appliances, or fixtures and fittings mentioned in these details, therefore, prospective purchasers should satisfy themselves before committing to purchase. Intending purchasers must satisfy themselves by inspection or otherwise to the correctness of the statements contained in these particulars. Knightsbridge Estate Agents & valuers (nor any person in their employment) has any authority to make any representation or warranty in relation to the property. The floor plans are not to scale, and are intended for use as a guide to the layout of the property only. They should not be used for any other purpose. Similarly, the plans are not designed to represent the actual décor found at the property in respect of flooring, wall coverings or fixtures and fittings.