

## Church Garth, N19

£375,000

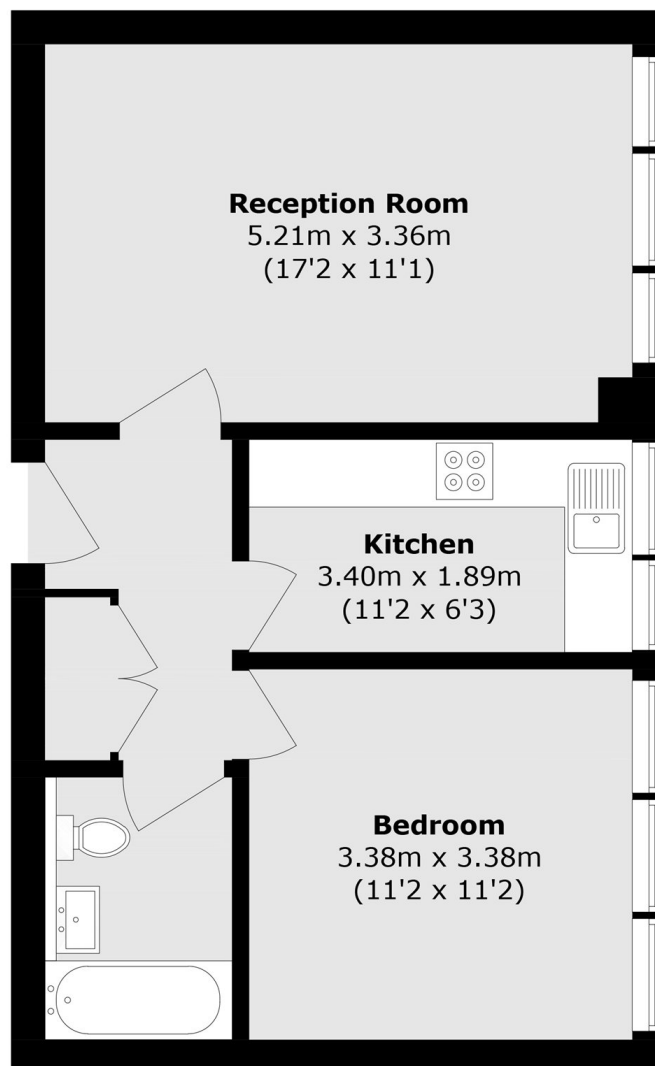
A beautifully refurbished one double bedroom apartment offering panoramic views across London. This naturally bright property has a separate reception room and kitchen, and well-maintained communal gardens.

Pemberton Gardens is moments from the numerous cafés, bars and shops on nearby Junction Road, along with good transport links at Archway (Northern line) and Upper Holloway (Overground).

### Features

- One Double Bedroom
- Separate Kitchen
- Communal Gardens
- Chain Free
- Panoramic Views
- Lift Access

# Church Garth, London, N19



Total area (approx.): 46.1 sq. m (496.2 sq. ft)