



Fifth Cross Road, TW2

£1,050,000

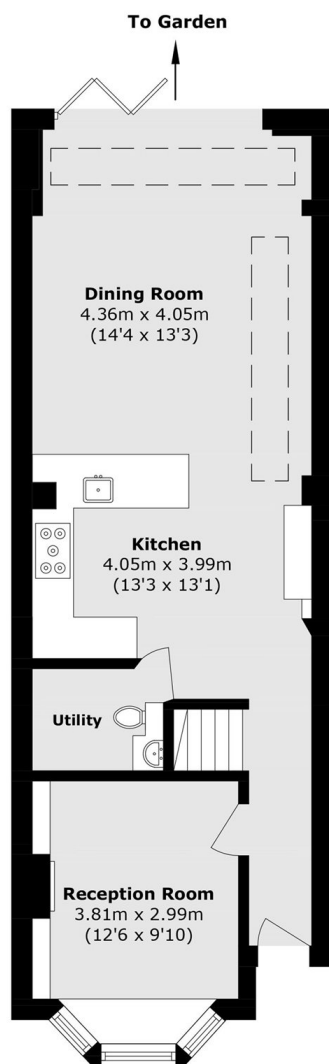
This Victorian end-of-terrace home has a separate front reception room, spacious kitchen/diner, utility room, downstairs loo, four bedrooms, two bathrooms and a cleverly laid out office space. There is a lovely rear garden perfect for entertaining and/or families.

Fifth Cross Road is in an ideal position for catchment into some of the areas best schools including Waldegrave Girls. There are excellent transport links nearby including Strawberry Hill and Fulwell stations, bus routes to Richmond and Kingston as well as easy access into Twickenham high street.

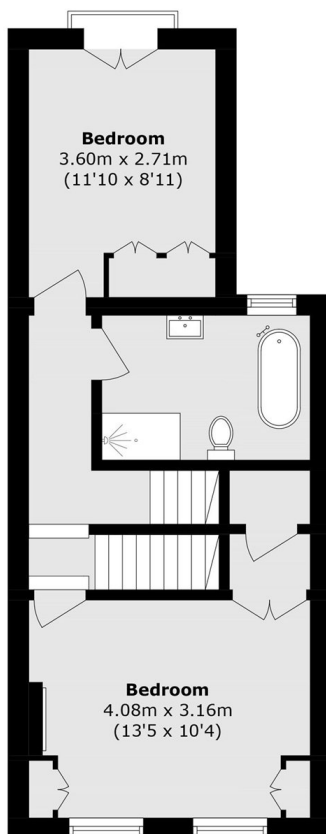
Features

Victorian Home
End Of Terrace
Four Bedrooms
Two Bathrooms
Open Plan Kitchen/Living
Utility Room

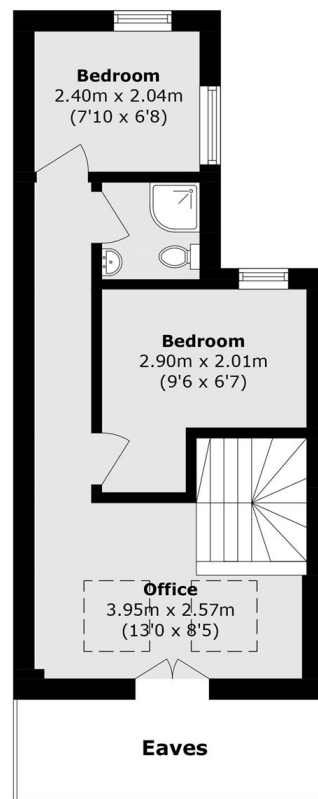
Fifth Cross Road, Twickenham, TW2



Ground Floor



First Floor



Second Floor