

Uckfield 01825 703000
Crowborough 01892 489000
Heathfield 01435 511800

Peter Oliver



Spring Meadow, Uckfield, TN22 1FB

- ▶ Beautifully Presented Family Home
- ▶ Seven Bedrooms & Three Bathrooms
- ▶ Off Road Parking & Double Garage
- ▶ Over 42ft Open Plan Kitchen/Dining Room
- ▶ Garden Office
- ▶ Sought After Location



EPC RATING

Current:  Potential:
EPC Awaited

Offers In Excess Of:
£1,000,000



Spring Meadow, Uckfield, TN22 1FB

This beautifully presented and extensively upgraded family home offers an exceptional balance of space, style, and modern convenience, having been thoughtfully improved by the current owners to a high standard throughout. Designed with family living and entertaining in mind, the property provides bright, spacious, and versatile accommodation arranged over three floors. Upon entering, you are welcomed by a generous and inviting entrance hall, complete with a convenient downstairs W/C. To the front of the property, a well-proportioned sitting room enjoys a large bay window, allowing for an abundance of natural light and creating a warm yet elegant space to relax. The true centrepiece of the home lies to the rear, where an outstanding 42ft open-plan kitchen, dining, and family area spans the full width of the property. This impressive space has been designed to accommodate modern living, offering clearly defined areas for cooking, dining, and lounging while maintaining a seamless, sociable layout. The kitchen itself is both stylish and practical, featuring ample storage and workspace, while the family area provides a perfect setting for entertaining or everyday life. Large openings to the garden further enhance the sense of space and light, making this an ideal environment for hosting family and friends throughout the year. The ground floor also benefits from underfloor heating, adding a further touch of comfort and luxury. The first floor offers a superb principal bedroom suite, complete with a dedicated dressing room, a well-appointed en-suite bathroom, and a Juliet balcony, creating a light and airy retreat. A second double bedroom also benefits from its own en-suite, ideal for guests or older children, while three additional bedrooms are served by a modern and well-finished family bathroom. The second floor continues to impress, providing two further bright and generously sized double bedrooms, offering excellent flexibility for larger families, guest accommodation, or home office space. Externally, the property is equally well equipped, with off-road parking for multiple vehicles and the added benefit of an integral double garage with EV charger, providing secure parking or additional storage. The south-facing rear garden has been thoughtfully landscaped to include a patio area ideal for outdoor dining, a well-maintained lawn, and a fully powered garden office, perfect for remote working, hobbies, or additional living space. Situated in a highly convenient location, the property is within easy walking distance of local shops, well-regarded schools, and excellent transport links, making it an ideal choice for families seeking both practicality and a strong sense of community. This exceptional home combines generous proportions, high-quality finishes, and a superb layout, offering a rare opportunity to acquire a truly turn-key property in a sought-after setting.

Uckfield
Crowborough
Heathfield

01825 703000
01892 489000
01435 511800

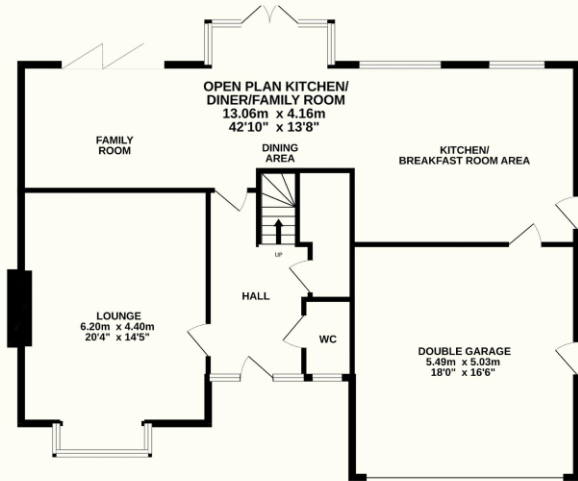
Peter Oliver

The Property
Ombudsman

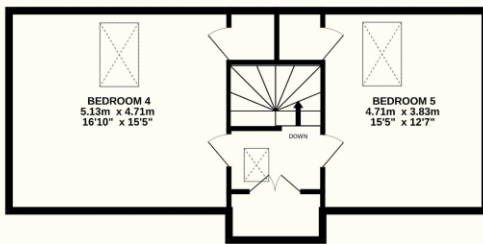
The Property
Ombudsman
LETTINGS



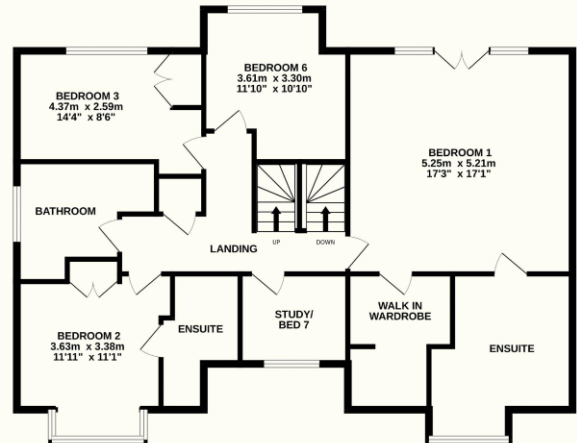
GROUND FLOOR 118.1 sq.m. (1272 sq.ft.) approx.



2ND FLOOR 54.3 sq.m. (584 sq.ft.) approx.



1ST FLOOR 112.2 sq.m. (1208 sq.ft.) approx.



GARDEN ROOM 21.0 sq.m. (226 sq.ft.) approx.



TOTAL FLOOR AREA : 305.7 sq.m. (3290 sq.ft.) approx.

Whilst every attempt has been made to ensure the accuracy of the floorplan contained here, measurements of doors, windows, rooms and any other items are approximate and no responsibility is taken for any error, omission or mis-statement. This plan is for illustrative purposes only and should be used as such by any prospective purchaser. The services, systems and appliances shown have not been tested and no guarantee as to their operability or efficiency can be given.

Made with Metropix ©2026



TENURE: FREEHOLD

COUNCIL TAX BAND: G

MAINTENANCE/SERVICE CHARGE: Approx. £300 per year

Uckfield 01825 703000
 Crowborough 01892 489000
 Heathfield 01435 511800
info@peteroliverhomes.co.uk

Peter Oliver