



# SOUL ESTATES

## SALES & LETTINGS

### TO LET - 3 BEDROOM HOUSE

**Bedford Street, Tipton, DY4 7NX**

**£1,350 PCM**

Soul Estates are proud to present this well-presented 3-bedroom mid-terraced detached house To Let. This perfect family home is situated in a very popular area of Tipton. Situated near Dudley Port Train Station with good schools, local amenities and transport links and close to Great Bridge Asda and Burnt Tree Island Tesco.

The property offers an entrance hall with rooms going off to the family kitchen, a spacious lounge, a downstairs WC and a storage cupboard. Kitchen with a range of wall and base units to match, cooker splashback, with an electric Hob and Oven

Stairs leading to the first-floor landing, which leads off to two good-sized bedrooms and a family bathroom.

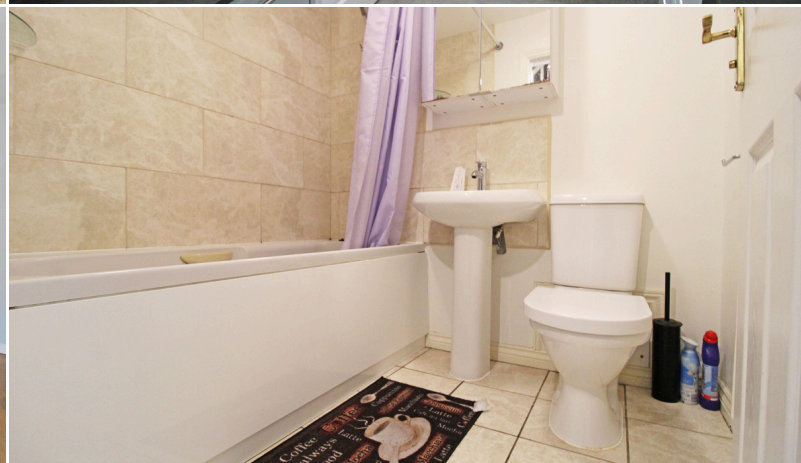
Stairs leading to the second-floor landing, which leads off to the master bedroom with an en-suite and dressing area. The property also benefits from gas central heating and double glazing, low maintenance front and rear garden with off-road parking.

✓ **3 BEDROOM MID-TERRACED HOUSE**

✓ **SPACIOUS THOUGH LOUNGE**

✓ **MASTER BEDROOM WITH ENSUITE**

✓ **GARAGE & DRIVEWAY**









# SOUL ESTATES

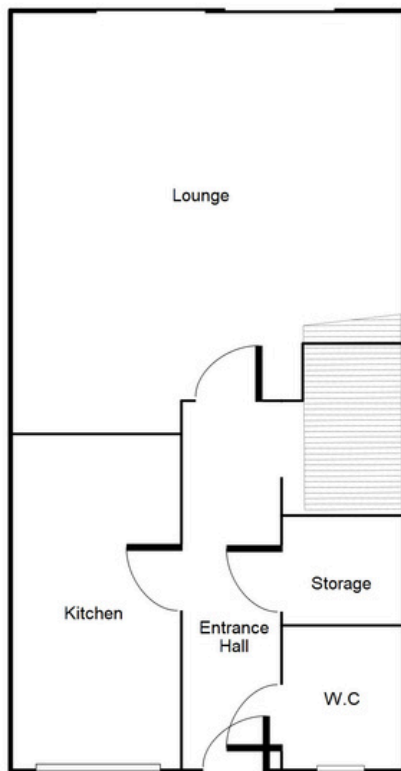
## SALES & LETTINGS

### TO LET - 3 BEDROOM HOUSE

Bedford Street, Tipton, DY4 7NX

£1,350 PCM

#### Ground Floor



This floorplan is just an example, this is not to scale.  
Please see description for exact room sizes.  
(c) Soul Estates

#### Entrance Hallway:

14' 4" x 3' 6" (4.37m x 1.07m)

#### WC:

5' 8" x 2' 10" (1.73m x 0.86m)

#### Kitchen:

11' 9" x 5' 11" (3.58m x 1.80m)

#### Lounge:

17' 8" x 12' 10" (5.38m x 3.91m)

### CONTACT US

Soul Estates  
20 Great Bridge  
Tipton  
DY4 7HA

0121 647 6779

[www.soulestates.co.uk](http://www.soulestates.co.uk)





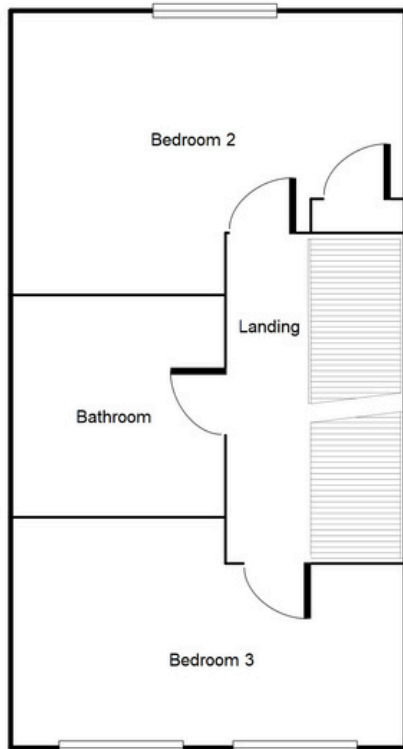
**SOUL ESTATES**  
**SALES & LETTINGS**

## TO LET - 3 BEDROOM HOUSE

**Bedford Street, Tipton, DY4 7NX**

**£1,350 PCM**

### First Floor



This floorplan is just an example, this is not to scale.  
Please see description for exact room sizes.  
(c) Soul Estates

#### **Landing:**

11' 4" x 6' 7" (3.45m x 2.01m)

#### **Bedroom 2:**

11' 9" x 12' 10" (3.58m x 3.91m)

#### **Bedroom 3:**

11' 1" x 12' 10" (3.38m x 3.91m)

#### **Bathroom:**

6' 4" x 5' 6" (1.93m x 1.68m)

## CONTACT US

Soul Estates  
20 Great Bridge  
Tipton  
DY4 7HA

0121 647 6779

[www.soulestates.co.uk](http://www.soulestates.co.uk)



[WWW.SOULESTATES.CO.UK](http://WWW.SOULESTATES.CO.UK) | 0121 647 6779



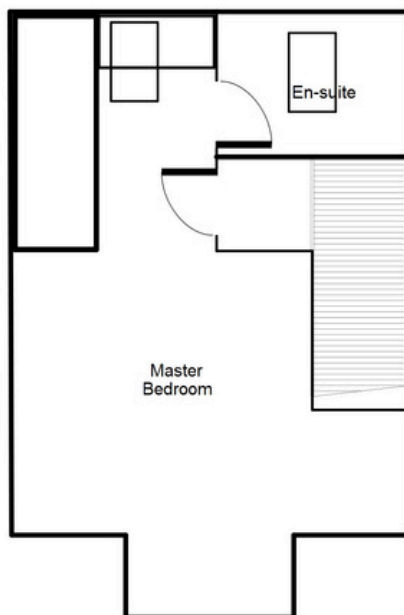
**SOUL ESTATES**  
**SALES & LETTINGS**

## TO LET - 3 BEDROOM HOUSE

**Bedford Street, Tipton, DY4 7NX**

**£1,350 PCM**

### Second Floor



This floorplan is just an example, this is not to scale.  
Please see description for exact room sizes.  
(c) Soul Estates

**Master Bedroom:**  
19' 3" x 12' 10" (5.86m x 3.91m)

**Master Ensuite:**  
5' 8" x 5' 6" (1.73m x 1.68m)

### CONTACT US

Soul Estates  
20 Great Bridge  
Tipton  
DY4 7HA

0121 647 6779

[www.soulestates.co.uk](http://www.soulestates.co.uk)



[WWW.SOULESTATES.CO.UK](http://WWW.SOULESTATES.CO.UK) | 0121 647 6779