



Belsize Park Gardens, NW3

£1,500,000

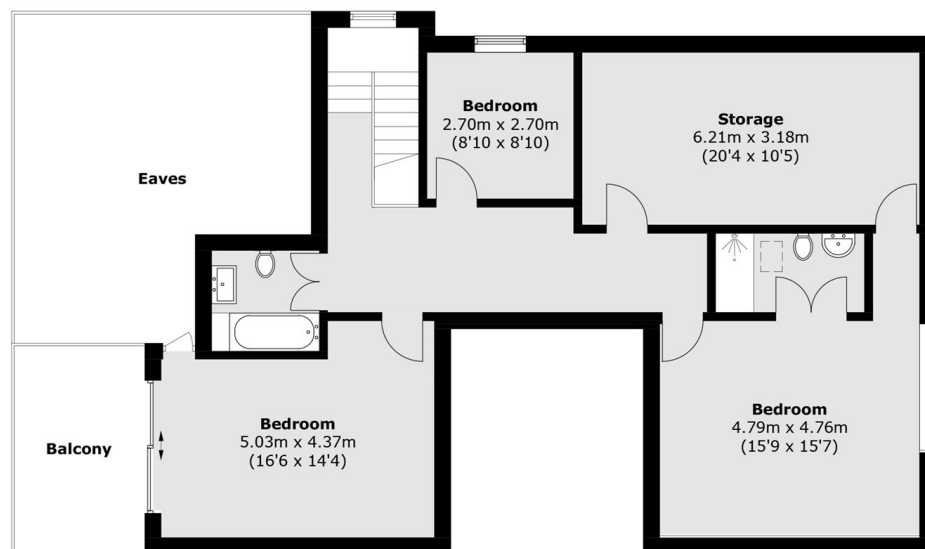
A beautiful and spacious three bedroom apartment set on the second floor of a period conversion, featuring exceptionally high ceilings and wood flooring throughout. The property also benefits from a lovely decked terrace, is presented in good condition, and is offered chain free with a share of freehold.

Situated in a sought after Belsize Park location, the property is close to the cafés, shops, and amenities of England's Lane and Haverstock Hill. Primrose Hill and Hampstead Heath are both within easy reach. Belsize Park underground station (Northern line).

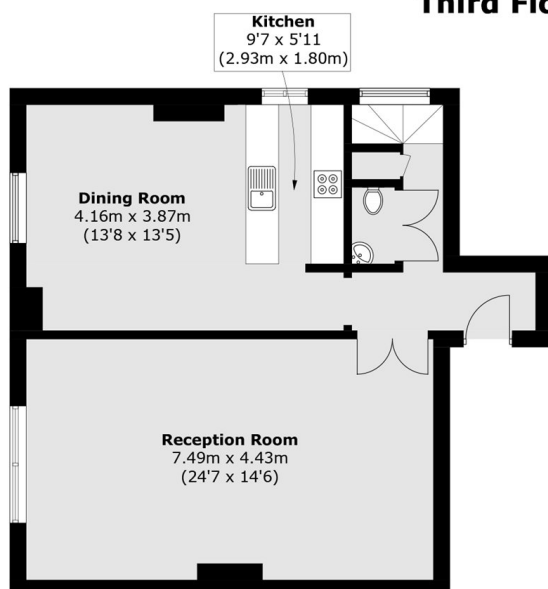
Features

- Three Bedrooms
- Two Bathrooms
- Share of Freehold
- Chain Free
- High Ceilings
- Excellent Location

Belsize Park Gardens, London, NW3



Third Floor



Second Floor

Total area (approx.): 163.4 sq. m (1,758.7 sq. ft)

Balcony: 9.1 sq. m (97.9 sq. ft)

(Excluding Eaves)