



Guide Price
£425,000

Freehold

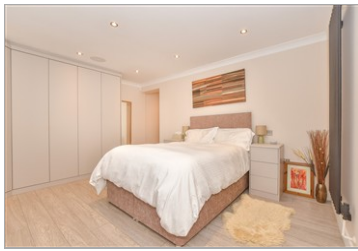
4x  2x  1x 

**The Parade, Greatstone,
Kent, TN28**

OVER 60?

Secure this property
for up to **59% less!**

Wards
Helping you move forwards



Main features

- Truly the best home of its kind that I have seen
- Split level accommodation making a very versatile home
- Stunning stylish decoration
- En-suite bathroom to bedroom 1
- High-end fittings throughout

Accommodation

GROUND FLOOR

- Entrance Hall
- Bathroom
- Bedroom 1: 14'7 x 12'2 (4.45m x 3.71m)
- En-Suite Bathroom
- Bedroom 2: 12'10 x 9'4 (3.91m x 2.85m)
- Bedroom 3: 10'3 x 8'6 (3.13m x 2.59m)

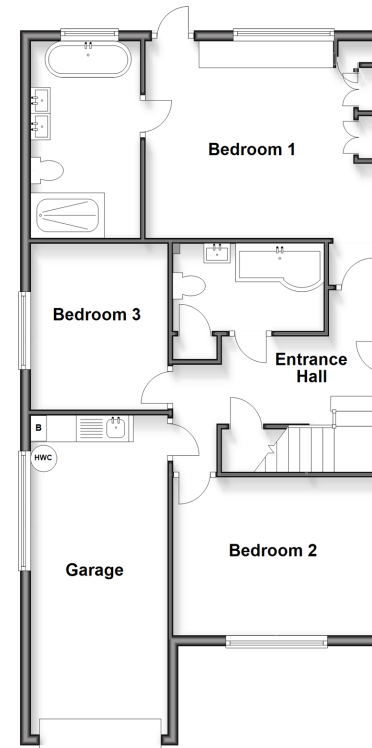
FIRST FLOOR

- Landing
- Cloakroom
- Lounge/Diner: 21'4 x 10'4 (6.51m x 3.15m)
- Kitchen: 13'6 x 8'6 (4.12m x 2.59m)
- Bedroom 4: 9'7 x 9'0 (2.92m x 2.75m)

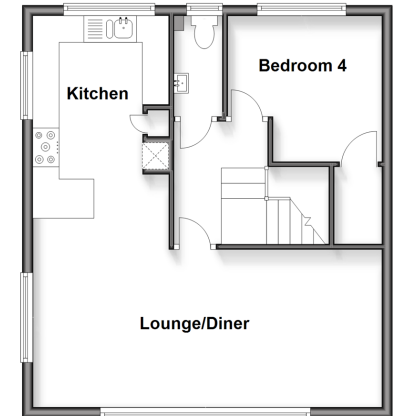
OUTSIDE

- Off Road Parking
- Garage
- Front & Rear Gardens

Ground Floor
Approx. 79.0 sq. metres (850.6 sq. feet)



First Floor
Approx. 48.9 sq. metres (526.8 sq. feet)



Call New Romney - 01797 363745 ■ wardsofkent.co.uk

- A private rental licensing scheme applies to some properties in this area, please check with the Local Authority before proceeding
- Legal advice should be taken to verify fixtures/fittings, planning, alterations and/or lease details
- Appliances & services are untested, dimensions are approximate and floor plans are not to scale
- Through a Homewise Home For Life Plan people aged 60+ can secure this property for up to 59% less, by purchasing a Lifetime Lease



13526054/20260127/MEL/CA