



Long Row, ##Invalid £410,000

- Council tax band E
- Three bedroom PLUS study
- End of terrace
- Allocated Parking
- Semi-rural Location - Desirable Llanelly Hill
- Outbuilding currently being used as storage space
- Viewing is highly recommended
- EPC Rating: F





About the property

This charming three-bedroom plus study end-of-terrace home is set within a generous plot in a sought-after semi-rural location, enjoying beautiful open scenic views. Full of character throughout, the property blends traditional features with versatile living space, making it an ideal family home.

The accommodation comprises a welcoming kitchen diner, perfect for everyday family life and entertaining, alongside two well-proportioned reception rooms. One reception room features a characterful log burner, creating a cosy focal point for the colder months, while the second offers flexible use as a formal dining room, sitting room, or additional family space

Upstairs, the property offers three bedrooms complemented by a separate study, ideal for home working or hobby use. The home retains a wealth of charm, with period details and a warm, homely atmosphere throughout.

Occupying a large plot, the property benefits from generous outdoor space and enjoys far-reaching countryside views, providing a peaceful setting while still remaining within convenient reach of local amenities and transport links.



Accommodation

Entrance Hall

20' 5" x 7' 6" (6.22m x 2.29m)

Lounge

12' 1" x 11' 11" (3.68m x 3.63m)

Dining Room

14' 7" max x 11' 9" (4.45m max x 3.58m)

Kitchen

21' 1" x 11' 11" (6.43m x 3.63m)

Utility Room

13' 8" x 6' 6" (4.17m x 1.98m)

Landing

20' 7" max x 11' 9" max (6.27m max x 3.58m max)

Bedroom One

20' 6" max x 17' 9" max (6.25m max x 5.41m max)

Bedroom Two

12' 11" x 11' 11" (3.94m x 3.63m)

Bedroom Three

13' x 12' 7" (3.96m x 3.84m)

Bedroom Four

10' 5" x 7' (3.17m x 2.13m)

Bathroom Ds

7' 10" x 6' 6" (2.39m x 1.98m)

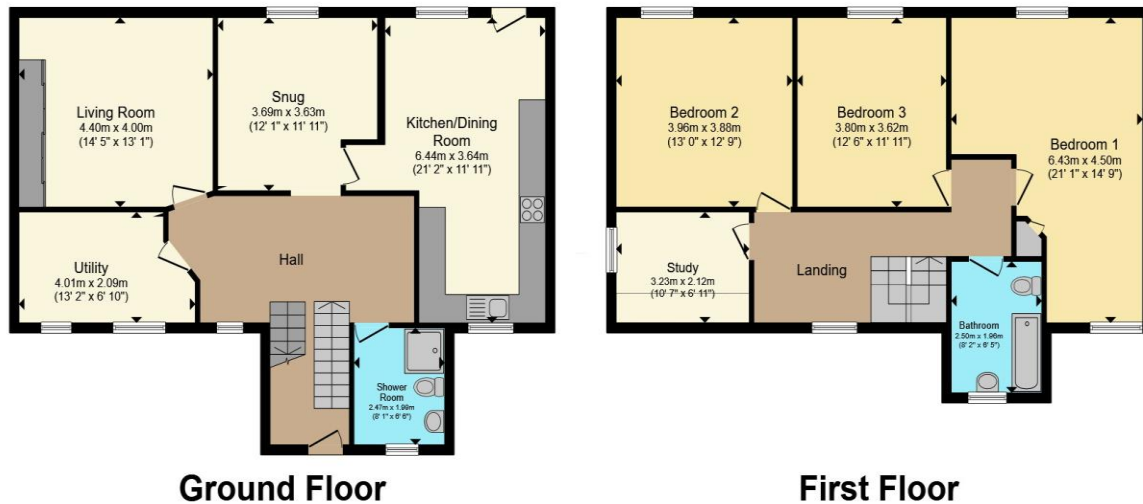
Bathroom Us

8' 1" x 6' 5" (2.46m x 1.96m)

01495360922

ebbwvale@peteralan.co.uk

Floorplan



Total floor area 166.8 m² (1,796 sq.ft.) approx

This floor plan is for illustrative purposes only. It is not drawn to scale. Any measurements, floor areas (including any total floor area), openings and orientation are approximate. No details are guaranteed, they cannot be relied upon for any purpose and they do not form part of any agreement. No liability is taken for any error, omission or misstatement. A party must rely upon its own inspection(s). Powered by www.propertybox.io



Important Information

Note while we endeavour to make our sales details accurate and reliable, if there is any point which is of particular interest to you, please contact the office and we will be pleased to confirm the position for you. We have not personally tested any apparatus, equipment, fixtures, fittings or services and cannot verify they are in working order or fit for their purposes. Nothing in these particulars is intended to indicate that carpets or curtains, furnishings or fittings, electrical goods (whether wired or not). Gas fires or light fittings or any other fixtures not expressly included form part of the property offered for sale. This computer generated Floorplan, if applicable, is intended as a general guide to the layout and design of the property. It is not to scale and should not be relied upon for dimensions. Tenure: We cannot confirm the tenure of the property as we have not had access to the legal documents. The buyer is advised to obtain verification from their solicitor or surveyor.

Peter Alan Limited is registered in England and Wales under company number 2073153, Registered Office is Cumbria House, 16-20 Hockliffe Street, Leighton Buzzard, Bedfordshire, LU7 1GN. VAT Registration Number is 500 2481 05. For activities relating to regulated mortgages and non-investment insurance contracts, Peter Alan Limited is an appointed representative of Connells Limited which is authorised and regulated by the Financial Conduct Authority. Connells Limited's Financial Services Register number is 302221. Most buy-to-let

