



27 Helena Street, Kippax

Asking Price **£190,000**



27 Helena Street

Kippax, Leeds

A bright, well-proportioned 2-bed semi with a fantastic generous garden and driveway parking. Move-in ready with a modern kitchen and conservatory, offering the perfect opportunity to update and add value at your own pace.

Council Tax band: B

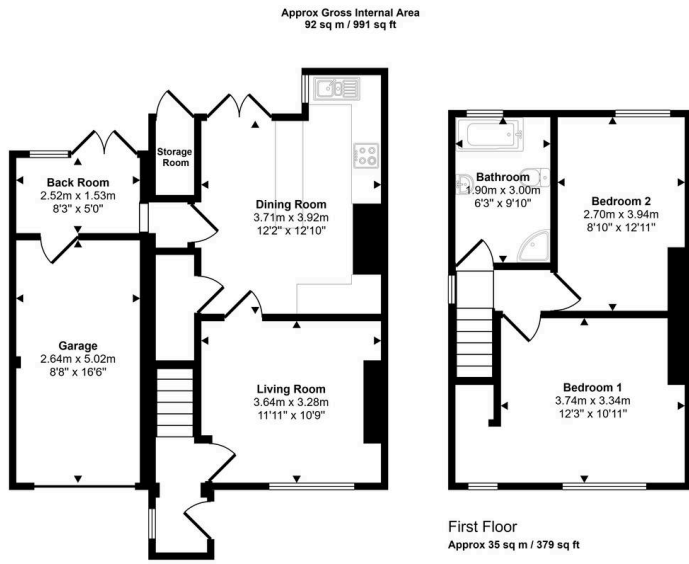
Tenure: Freehold

EPC Energy Efficiency Rating: D

EPC Environmental Impact Rating: E

- Spacious Garden
- Chain Free Sale!
- First Time Buyers and Investors!
- Single Garage
- Kitchen/ Diner
- Modern Bathroom with Walk-In Shower and Bath-Tub





Ground Floor
Approx 57 sq m / 612 sq ft

Whilst every attempt has been made to ensure the accuracy of the floor plan contained here, measurements of doors, windows, rooms and any other items are approximate and no responsibility is taken for any error, omission, or mis-statement. The measurements should not be relied upon for valuation, transaction and/or funding purposes. This plan is for illustrative purposes only and should be used as such by any prospective purchaser or tenant.





Aspire Estates

Aspire Properties, Wira Business Park Ring Road - LS16 6EB

0113 8875079

estatesales@aspirepropertygroup.co.uk

www.aspirepropertygroup.co.uk/