

SELLING & RENTING  
HOMES  
— Since 2005 —



LAND ESTATES  
SALES, LETTINGS & MANAGEMENT



**CAIRNS CLOSE**

**DARTFORD**

**£1,950 Per Month**

- Three bedroom house.
- Modern throughout.
- Walking distance to Dartford Train Station.
- Walking distance to Dartford Town Centre.
- Near to a variety of schools.

Land Estates are proud to bring to the market this three bedroom end of terraced home located in the quiet Cairns Close in Dartford.

Comprising of: Hallway, lounge, dining room and kitchen to the ground floor.

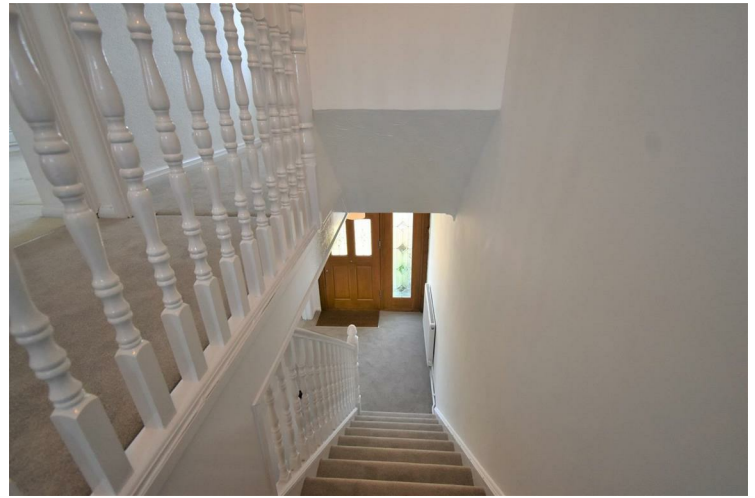
To the first floor you will note, two double bedrooms, one larger than average third bedroom and a family bathroom.

The garden to the rear is a good size with side access to the front of the property via a side gate.

Cairns Close is in a great location and is within walking distance to Dartford Train Station, Dartford Town Centre and a variety of schools.

To arrange your viewing, please call Land Estates today.







Energy Efficiency Rating		
	Current	Potential
<i>Very energy efficient - lower running costs</i>		
(92 plus) <b>A</b>		
(81-91) <b>B</b>		
(69-80) <b>C</b>		
(55-68) <b>D</b>		
(39-54) <b>E</b>		
(21-38) <b>F</b>		
(1-20) <b>G</b>		
<i>Not energy efficient - higher running costs</i>		
<b>England &amp; Wales</b>	EU Directive 2002/91/EC	

**EPC Rating: Council Tax Band: D**

Agents Note: Whilst every care has been taken to prepare these particulars, they are for guidance purposes only. All measurements are approximate and are for general guidance purposes only and whilst every care has been taken to ensure their accuracy, they should not be relied upon and potential buyers/tenants are advised to recheck the measurements

Land Estate  
6 Market Street  
Dartford  
Kent  
DA1 1ET

01322 413501  
info@landestate.co.uk  
www.landestate.co.uk



**LAND ESTATES**  
SALES, LETTINGS & MANAGEMENT