

84 Northfield Avenue, London, W13 9RR

020 8840 5151



Freehold / House - Semi-Detached

Cantley Road

£1,095,000

Tucked away on a quiet residential street close to several outstanding local schools, this four bedroom semi-detached house is presented in excellent condition throughout.

- Four bedrooms + Two bathrooms
- Utility room and downstairs cloakroom
- Air conditioning
- Excellent condition throughout
- Close to several outstanding local schools
- Boston Manor Tube + Hanwell Station (Elizabeth Line)



Freehold / House - Semi-Detached

Cantley Road, W7 2BQ

£1,095,000

Arranged over three floors, offering circa 1500 sq. ft of living space and air conditioning in all the bedrooms, this four-bedroom house has been thoughtfully updated by the current owner.

The property features a front reception room with a beautiful fireplace and large bay window. The rear of the house has been remodelled and now boasts a wonderful open-plan kitchen/diner that seamlessly flows into a spacious contemporary conservatory. Doors from both the kitchen and conservatory lead to a generous and secluded rear garden. A very useful utility room and cloakroom completes the ground floor.

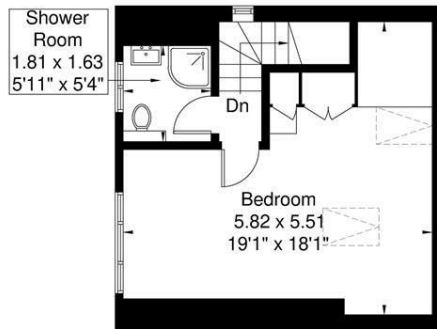
Up onto the first floor there are three bedrooms and a stylish bathroom. The loft space has been converted and now houses the principal bedroom, shower room and plenty of storage space.

Ideally located close to both Boston Manor Tube Station and Hanwell Station (Elizabeth Line). The property falls within the catchment area for well-regarded schools, including Oaklands and Fielding Primary Schools, and Elthorne Park High School. The green open spaces of Elthorne Park is also close by.

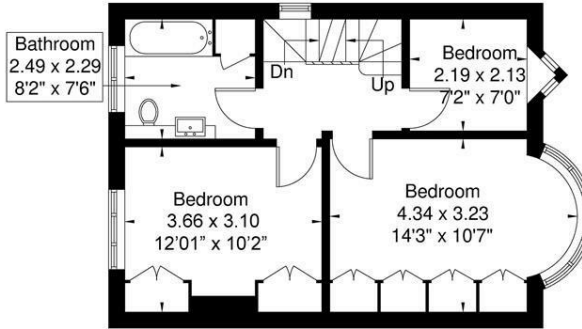


Cantley Road

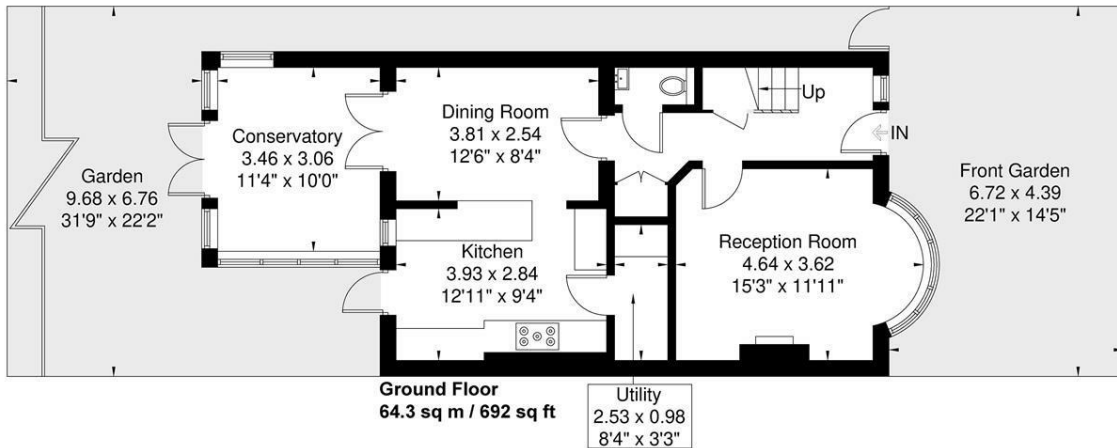
Approximate Gross Internal Area = 138.5 sq m / 1491 sq ft



Second Floor
29.8 sq m / 320 sq ft



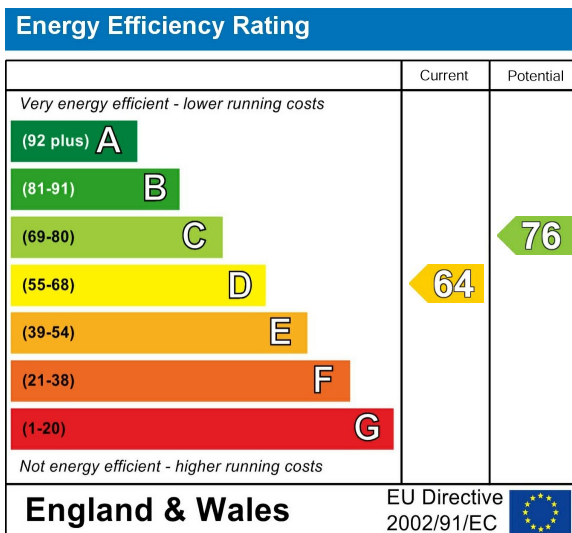
First Floor
44.4 sq m / 478 sq ft



Ground Floor
64.3 sq m / 692 sq ft

Although every attempt has been made to ensure accuracy, all measurements are approximate. The floorplan is for illustrative purposes only and not to scale.
© www.prspective.co.uk

Energy Performance Graph



Call us on

020 8840 5151

northfieldsales@sintonandrews.co.uk

www.sintonandrews.co.uk

Agents Note: Whilst every care has been taken to prepare these particulars, they are for guidance purposes only. All measurements are approximate and are for general guidance purposes only and whilst every care has been taken to ensure their accuracy, they should not be relied upon and potential buyers are advised to recheck the measurements.