



57 Eldertree Road

Thorpe Hesley, Rotherham

- Fabulous Three Bedroom Family Home - Thorpe Hesley
- Desirable Location close to Schools and Commuter Transport Links
- SIZEABLE FIELD SIDE PLOT with Double Width Driveway and Sweeping Enclosed Gardens to the Rear
- Spacious Main Reception Enjoying Light from both a Front Aspect Window and Rear French Doors
- Attractive Modern Breakfasting Kitchen with Centre Breakfast Bar Island
- Handy Utility Area and Downstairs WC
- Three Good Sized Bedroom, all with Built-In Storage
- Family Bathroom with Corner Bath
- Generous Enclosed Garden with Outbuildings, an Extensive Paved Patio Area, with Field Side Views
- Tenure: Freehold, Council Tax Band: A, EPC; To Follow



57 Eldertree Road

Thorpe Hesley, Rotherham

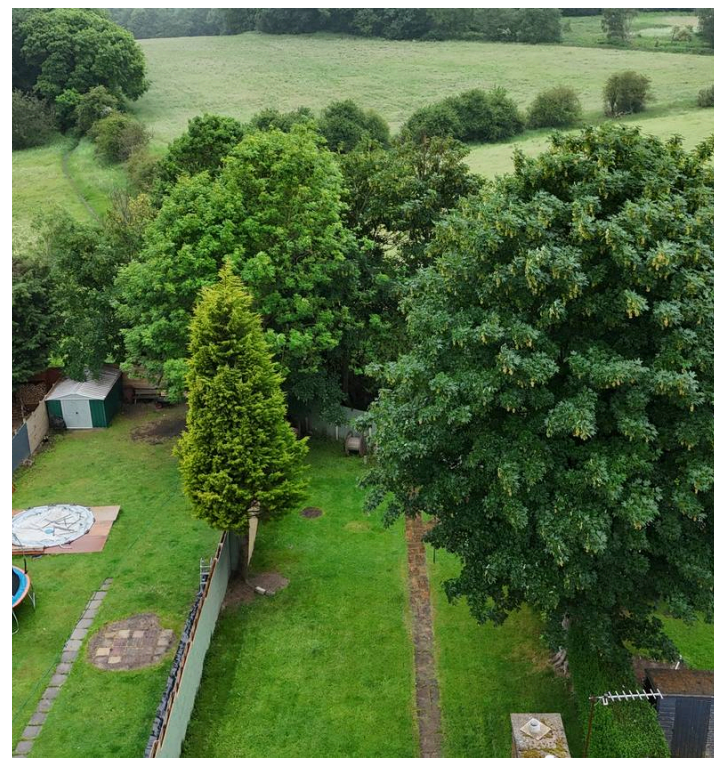
Guide Price £180,000 to £190,000 -

Welcome to this fabulous three bedroom semi detached family home, perfectly positioned in the highly sought-after village of Thorpe Hesley, ideal for families and professionals seeking a spacious, well-appointed property in a desirable location.

Set within a sizeable field side plot, this beautifully maintained home is just moments from reputable schools and excellent commuter transport links, making daily life convenient and stress-free.

Step inside to discover a welcoming entrance hall that leads through to the spacious main reception room, where an abundance of natural light pours in from both a large front aspect window and elegant rear French doors, creating a bright and airy atmosphere ideal for relaxing or entertaining guests.

The heart of the home is undoubtedly the attractive modern breakfasting kitchen, which boasts a stylish centre breakfast bar island, ample worktop space, and sleek cabinetry, providing the perfect setting for family meals and social gatherings. A handy utility area and a downstairs WC add to the property's practical appeal, ensuring every-day tasks are managed with ease.



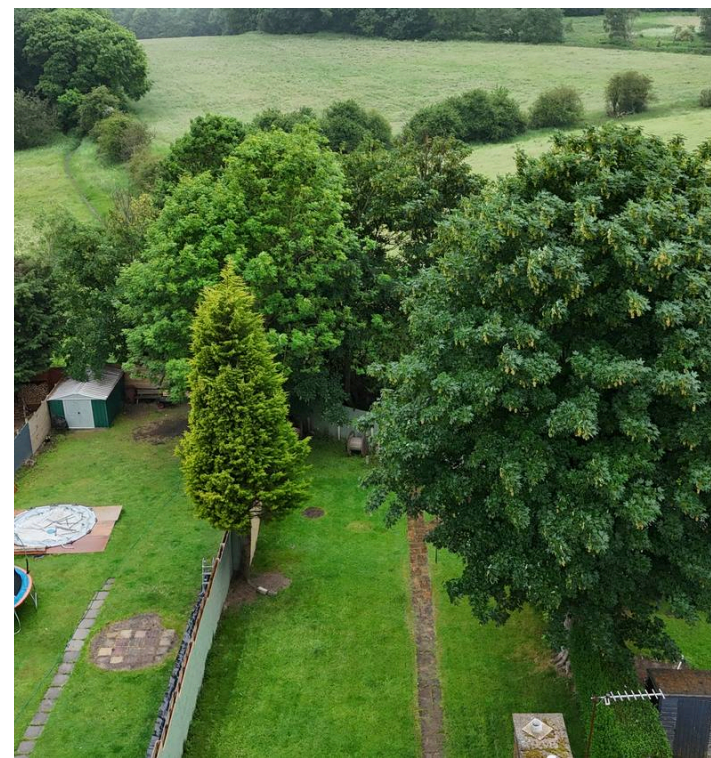
57 Eldertree Road

Thorpe Hesley, Rotherham

Upstairs, you will find three generously sized bedrooms, each benefiting from built-in storage solutions that maximise space and organisation, making them suitable for children, guests, or a home office. The family bathroom is thoughtfully designed, featuring a corner bath that offers a touch of luxury for unwinding after a long day.

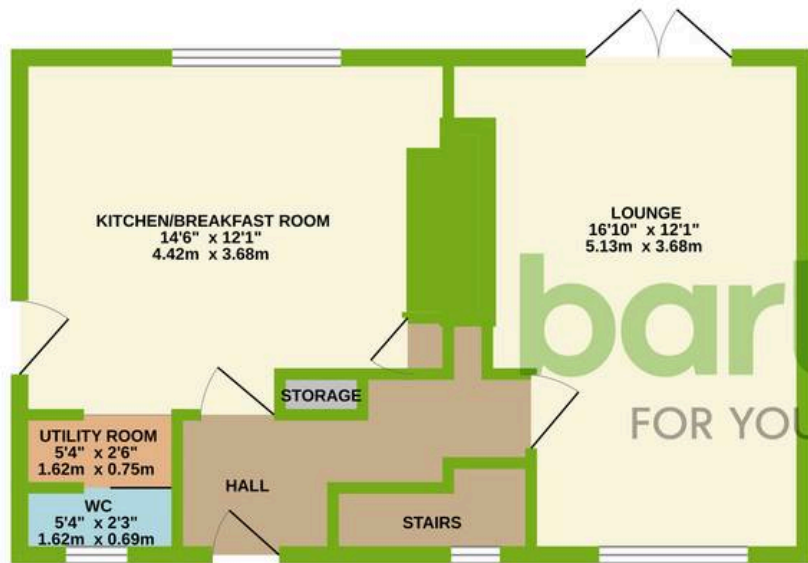
Additional features include a double width driveway, as well as outbuildings that offer flexible storage or workshop options to suit your needs.

This home is presented in excellent condition throughout and is ready to welcome its next owners. With its combination of plot size, field side views, contemporary comfort, practical amenities, and a prime location close to local shops, schools, and transport links, this property is a superb choice for a range of buyers. Early viewing is highly recommended to fully appreciate all that this exceptional home has to offer. Viewings are available strictly by appointment - contact us today to arrange yours.

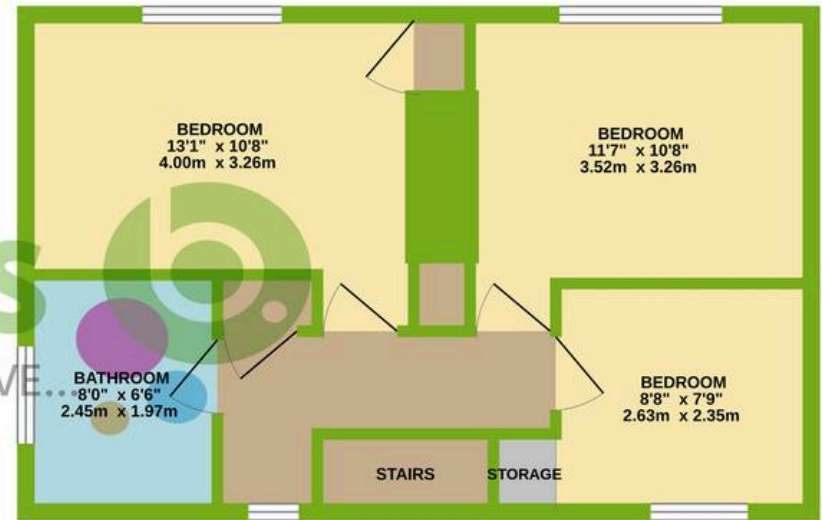




GROUND FLOOR
432 sq.ft. (40.1 sq.m.) approx.



1ST FLOOR
437 sq.ft. (40.6 sq.m.) approx.



TOTAL FLOOR AREA : 869 sq.ft. (80.7 sq.m.) approx.

Whilst every attempt has been made to ensure the accuracy of the floorplan contained here, measurements of doors, windows, rooms and any other items are approximate and no responsibility is taken for any error, omission or mis-statement. This plan is for illustrative purposes only and should be used as such by any prospective purchaser. The services, systems and appliances shown have not been tested and no guarantee as to their operability or efficiency can be given.
Made with Metropix ©2026



Bartons

Bartons Estate Agency, 51-53 Moorgate Street - S60 2EY

01709 515740 • info@bartons-net.co.uk • www.bartons-net.co.uk/