



Meridian Place

London, E14

Asking Price £550,000

A pristine and spacious two bedroom and two bathroom with apartment, with balcony overlooking South Dock in Canary Wharf. Meridian Place is situated moments away from South Quay DLR and the many amenities of Canary Wharf and has private parking.

CHESTERTONS



Meridian Place

London, E14

- Two Bedrooms Two Bathrooms.
- 944 Square Ft.
- Private Balcony Overlooking South Dock and Communal Gardens.
- Secure Underground Parking.
- 24 Hour Concierge.
- Superb Access for Canary Wharf and South Quay DLR.



A pristine and spacious two bedroom and two bathroom with apartment, with a private balcony offering fabulous waterside views overlooking the South Dock in Canary Wharf. Meridian Place is situated moments away from South Quay DLR and the many amenities of Canary Wharf and has private underground parking.

The property benefits from a bright and airy open-plan living and dining area, a modern fully fitted kitchen, generous double bedrooms, and ample built-in storage throughout. The principal bedroom features an en-suite bathroom, while floor-to-ceiling windows allow for an abundance of natural light and uninterrupted dock views.

The property is sold chain.

Tenure: Leasehold 96 years approx. remaining.

Service Charge: £6,264 pa approx.

Ground Rent: £300 thereafter £600pa until 23rd June 2072, £1200 pa until 23rd June 2097 and then £2400pa the remainder of the term.

Local Authority: Tower Hamlets

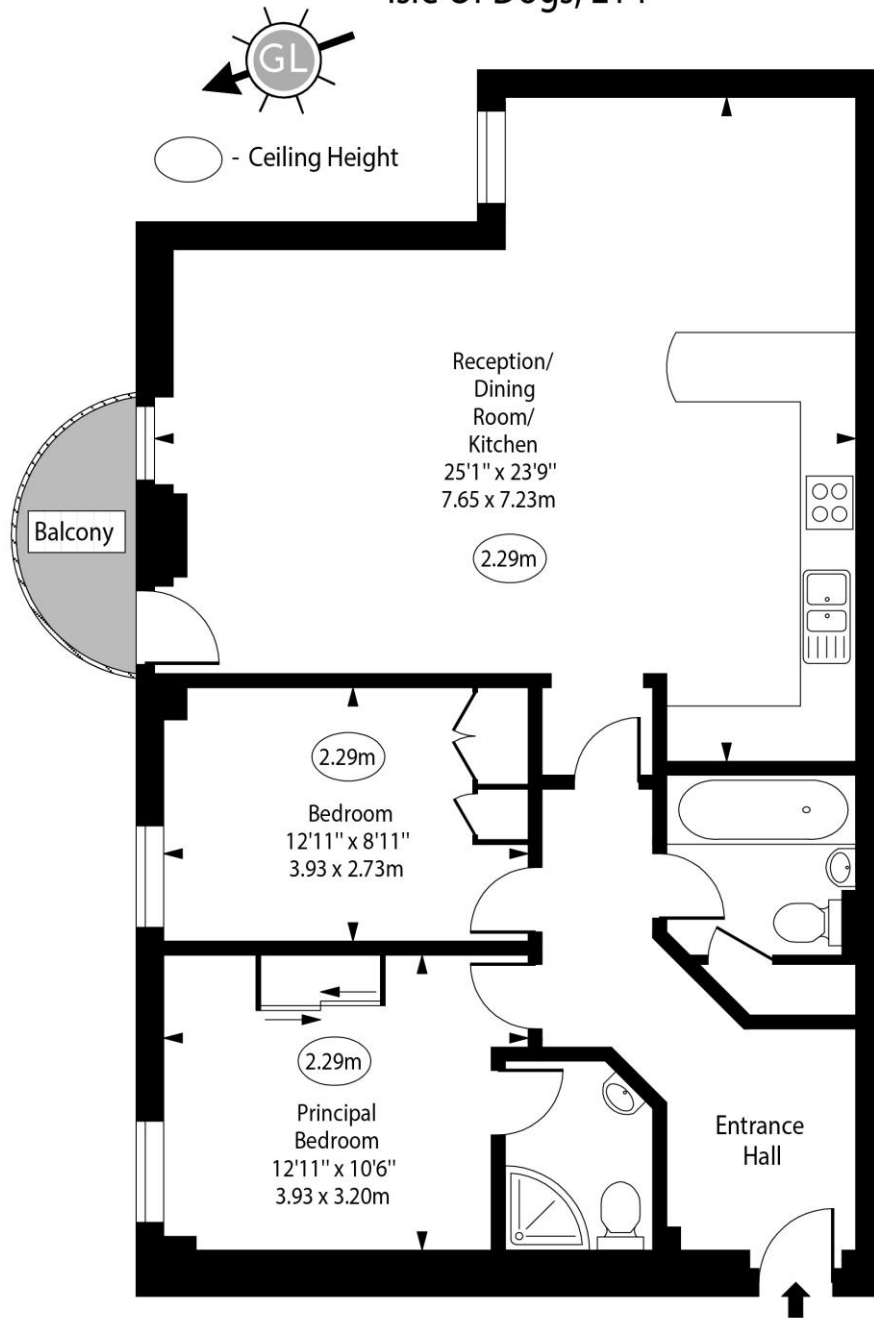
Council Tax Band: G

Energy Efficiency Rating		Current	Potential
Very energy efficient - lower running costs			
(92-100)	A		
(81-91)	B		
(69-80)	C	73	77
(55-68)	D		
(39-54)	E		
(21-38)	F		
(1-20)	G		
Not energy efficient - higher running costs			
England, Scotland & Wales		EU Directive 2002/91/EC	

Chestertons Canary Wharf & Greenwich Sales

Harbour Island
 28 Harbour Exchange Square
 London
 E14 9GE
 canarywharf@chestertons.co.uk
 020 7510 8300
 chestertons.co.uk

Meridian Place,
Isle Of Dogs, E14



Approx Gross Internal Area 944 Sq Ft - 87.70 Sq M

For Illustration Purposes Only - Not To Scale

www.goldlens.co.uk

Ref. No. 024251R

