

## Spring Street, W2

£200,000

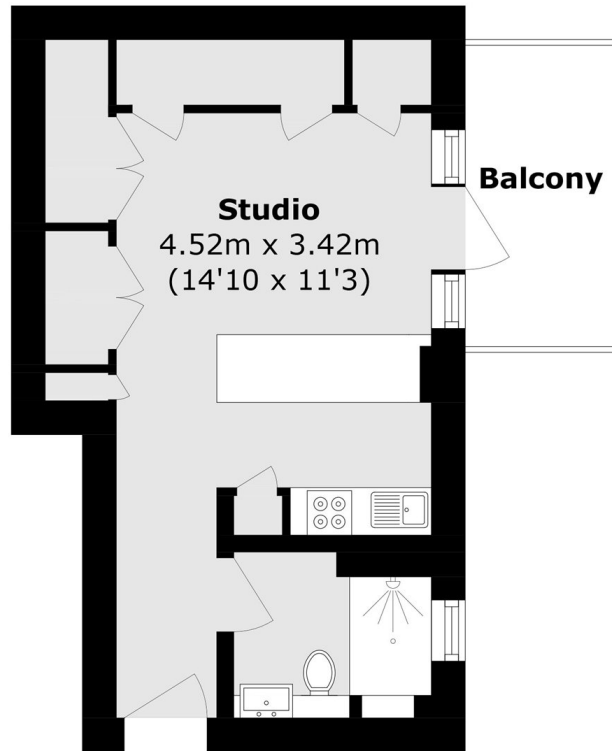
A well-presented fifth floor (with lift) studio flat in a purpose built mansion block. The open plan kitchen and reception room is well equipped and leads out to the private terrace with chimney pot views. For convenience, heating and hot water is included in the service charge.

Sussex Court, Spring Street W2 is ideally located opposite Paddington Station, giving easy access to Heathrow and across London. There's plenty of local amenities nearby including shops, restaurants and the green spaces of Hyde Park.

### Features

- Lift
- Private Roof Terrace
- Good Condition
- Long Lease
- Shower Room
- Paddington

# Spring Street, London, W2



## Fifth Floor

Total area (approx.): 18.7 sq. m (201.1 sq. ft)

Balcony area (approx.): 3.6 sq. m (38.7 sq. ft)