



£700,000

5 Bed House - Detached
located in Pear Tree Road

**REDSTONES**
The Property Experts

Pear Tree Road
Great Barr
Birmingham
B43 6JA



Offers Over £700,000

An extended and improved five bedroom detached family home in a highly sought after location.

The impressive accommodation split over three floors comprises of an entrance hall, lounge, study/office, kitchen, utility, and WC. On the first floor are four good sized bedrooms, ensuite shower room and family bathroom. On the top floor is the largest bedroom and ensuite which has bath and shower cubicle. The property benefits from central heating, double glazing, front driveway with parking for multiple cars and enclosed rear garden with large summer house.

Entrance Hall

20'11" x 7'2"

Wood effect laminate flooring, radiator, UPVC double glazed window and decorative door to front, ceiling spot lights, stairs off, doors off.

Lounge

39'4" x 14'1"

Carpet, two radiators, UPVC double glazed window to front, feature fire place with gas fire, French doors to rear.

Kitchen

27'6" x 16'4"

Tiled flooring, radiator, UPVC double glazed door and windows to rear, various wall units, granite work surface with granite splash back edging, inset stainless steel sink with mixer tap over, base units with integrated Bosch dishwasher, feature island with granite work surface, five burner hob with extractor over, plinth heater, door to utility.

Study / Office

13'9" x 6'6"

Wood effect laminate flooring, radiator, UPVC double glazed window to front.

Downstairs WC

Tiled flooring and walls, WC, vanity wash hand basin, extractor fan.

Utility

8'10" x 5'10"

Tiled flooring, double glazed window to side.

Stairs / Landing

Carpet, radiator, frosted UPVC double glazed window to side, stairs to top floor bedroom, doors off.

Bedroom Two

17'8" x 14'9"

Carpet, two radiators, UPVC double glazed windows to rear, fitted wardrobes, over bed surround, bedside tables, door to ensuite.

Ensuite

7'6" x 6'6"

Tiled flooring, chrome towel radiator, frosted UPVC double glazed window to side, WC, vanity wash hand basin, shower cubicle with mixer shower.

Bedroom Three

17'0" x 12'9"

Carpet, radiator, UPVC double glazed window to rear, fitted wardrobes.



Bedroom Four

14'5" x 9'10"

Carpet, radiator, UPVC double glazed windows to front.

Bedroom Five

15'5" x 9'10"

Carpet, radiator, UPVC double glazed windows to front.

Bathroom

9'2" x 7'2"

Tiled flooring, designer chrome towel radiator, frosted UPVC double glazed window to side, WC, pedestal wash hand basin, shower cubicle with mixer shower.

Stairs to Top Floor Bedroom

Carpet, skylight window.

Bedroom One

22'7" min x 16'4"

Carpet, two radiators, skylight windows to front and rear, Vailant system boiler with unvented tank, door to ensuite.

Ensuite

10'5" x 8'2"

Tiled flooring, chrome towel radiator, porthole ceiling window, WC, vanity wash hand basin, free standing bath, shower cubicle with mixer shower.

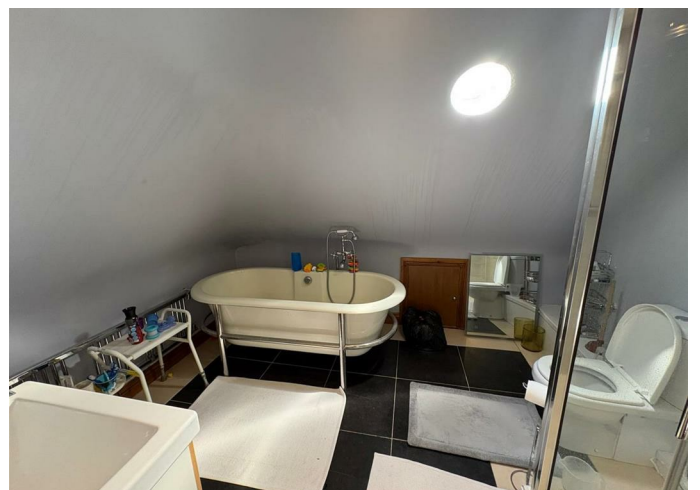
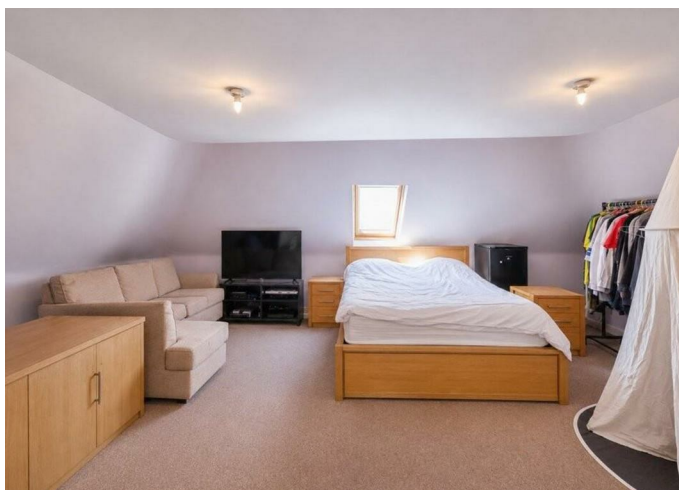
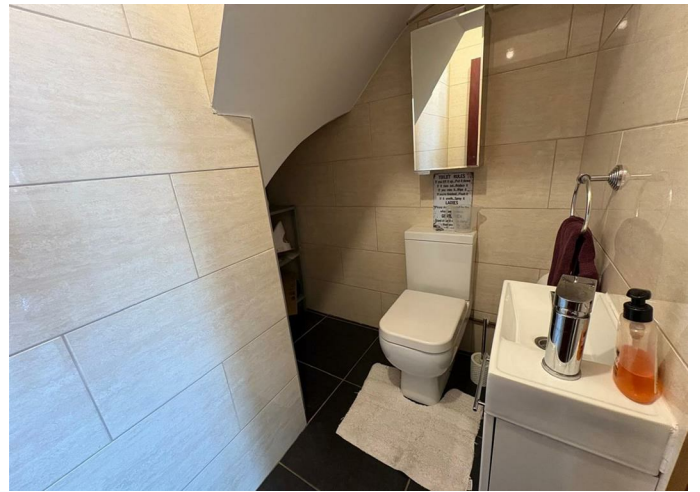
Outside

Front with driveway parking for multiple cars. Enclosed rear garden with patio, lawn, large summer house / Annexe and gated access to front.

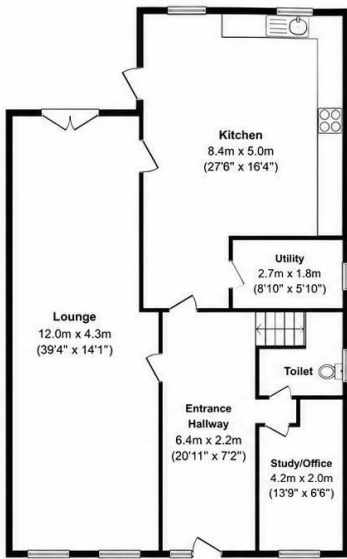
Summer House

37'0" x 15'1" and storage 17'8" x 9'6"

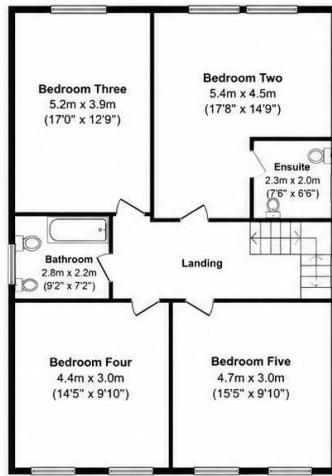
Large brick built summer house with glazed frontage at rear of garden with storage, power and lighting.







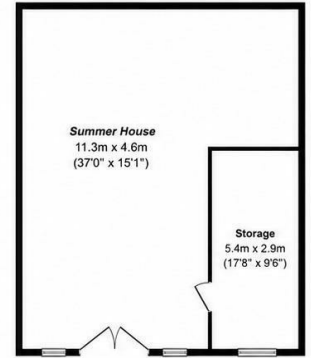
Ground Floor



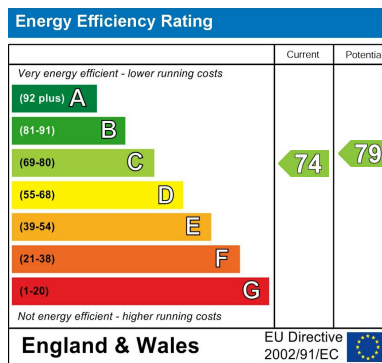
First Floor



Second Floor



Summer House (Annexe)



DIRECTIONS

CONTACT

West Midlands House
 Gipsy Lane
 Willenhall
 West Midlands
 WV13 2HA

E: info@redstones.co.uk
 T: 01922 235 350
<http://www.redstones.co.uk>

