



31 Draycott Avenue | | LONDON | SW3 3BS

£2,838 Per month

ESON2
REAL ESTATE

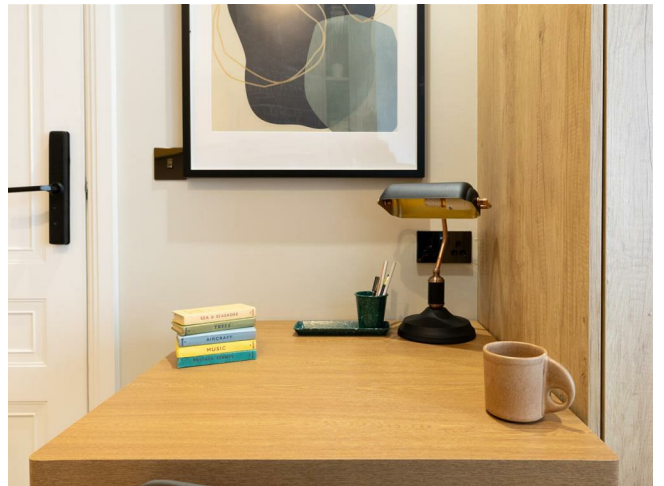
Key features

- Open-Plan Living
- High-End Kitchen
- Smart Design
- On-site Gym
- Workspace Facilities



Description

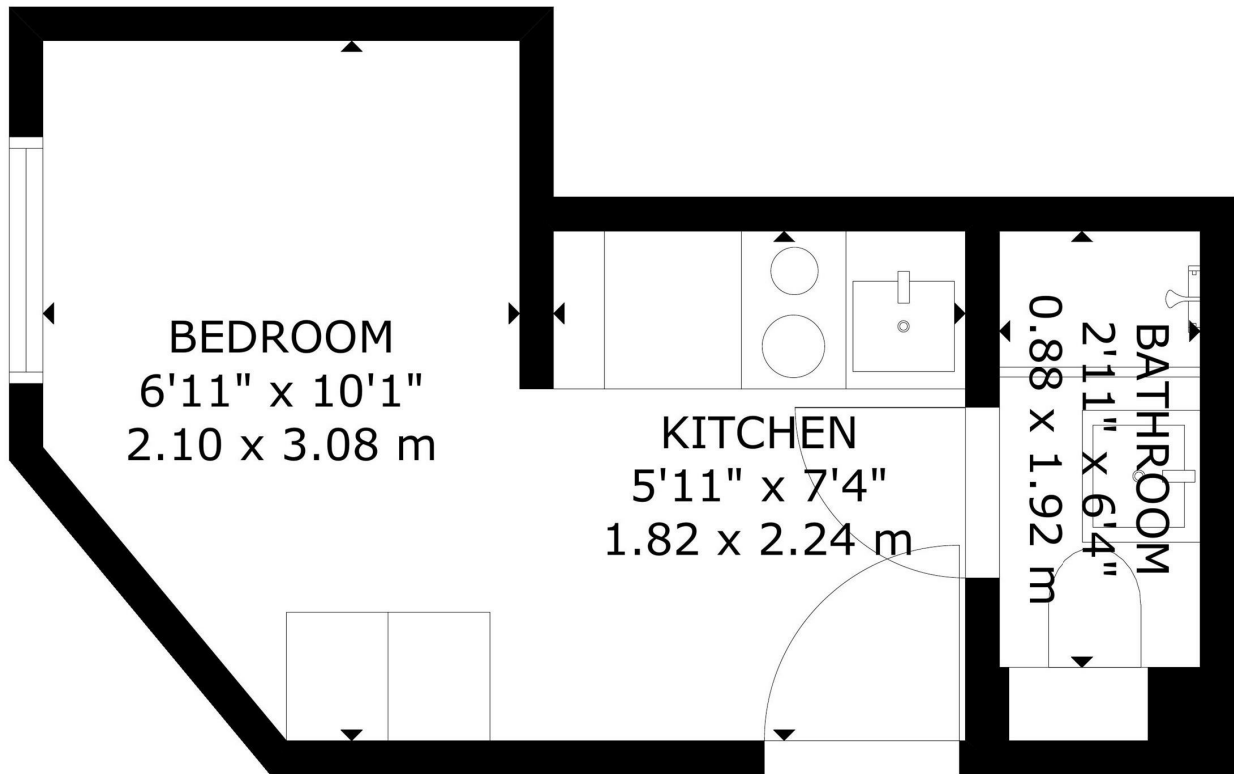
This newly renovated Chelsea studio offers modern interiors, a study room, premium appliances, and a luxury bathroom. With built-in storage and excellent transport links, it's a perfect choice for those seeking upscale living near King's Road.



Directions

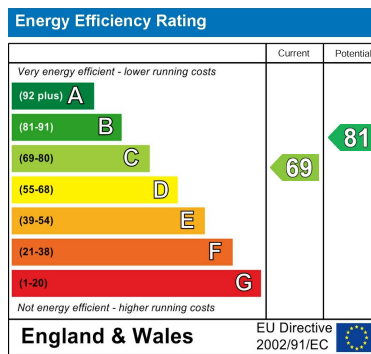
This newly renovated studio apartment, located in Chelsea, offers a sleek and functional living space with modern interiors and an open-plan layout that maximizes both space and natural light, creating a stylish and welcoming atmosphere.

Floor plans



GROSS INTERNAL AREA
 TOTAL: 13 m²/135 sq.ft
 SECOND FLOOR: 13 m²/135 sq.ft
 SIZE AND DIMENSIONS ARE APPROXIMATE, ACTUAL MAY VARY

SECOND FLOOR



Council Tax Band EPC Rating C



301 Michelin House 81 Fulham road
 London
 Greater London
 SW3 6RD
 07920 257649
 fayeel@eson2.co.uk
 www.eson2.co.uk