



The Close, Cleeve Prior, WR11 8LF

Guide Price £475,000

4 2

A beautifully styled, detached four-bedroom family home tucked away in a peaceful village cul-de-sac, backing onto woodland for wonderful privacy. Finished with non-toxic paints, glues and materials for healthier living, this thoughtfully designed home blends style and wellbeing effortlessly. With four bedrooms including a principal en suite, a flexible fourth bedroom ideal as a study, a reconfigured kitchen/dining space, versatile living areas, driveway, garage and a lovely garden, it offers the perfect balance of comfort, calm and village life.

- Detached home with 4 bedrooms
- Principal bedroom with en suite
- Spacious kitchen with french doors to garden
- Open plan dining area with patio doors to garden
- Oak-framed glazed bi-fold doors linking dining room and living room
- Woodland backdrop



W janelees.co.uk **T** 01789 576 065 **E** jane@janelees.co.uk

Buy Me, Sell Me Happy Houses Ltd Registered Office: Building 18, Gateway 1000, Whittle Way, Arlington Business Park, Stevenage, England, SG1 2FP
Trading address: 20a Chapel Street, Stratford-upon-Avon, England, CV37 6EP | Company Registration Number: 13086728 | Vat Number: 433396194

ico.
Information Commissioner's Office

The Property Ombudsman



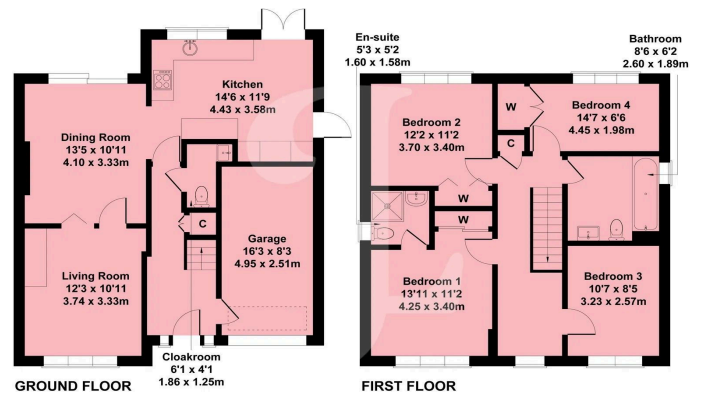
Floor Area: sq. ft.

Tenure: Freehold

Service Charge: £0 per annum

Ground Rent: £0 per annum

Score	Energy rating	Current	Potential
92+	A		
81-91	B		83 B
69-80	C		
55-68	D	62 D	
39-54	E		
21-38	F		
1-20	G		



Approximate Gross Internal Area = 129 sq m / 1389 sq ft
 Illustration for identification purposes only, measurements are approximate, not to scale.

