



## HEWETT STREET, EC2A

**£2,900 pcm**

This one-bedroom apartment is part of The Stage, a 37-storey luxury development in Shoreditch, East London, with interiors by Nicola Fontanella of Argent Design and bespoke management by Rhodium.

- Spacious one bedroom
- Luxury new build
- Cinema Rooms
- Arcade
- Gym
- 32nd floor Sky lounge

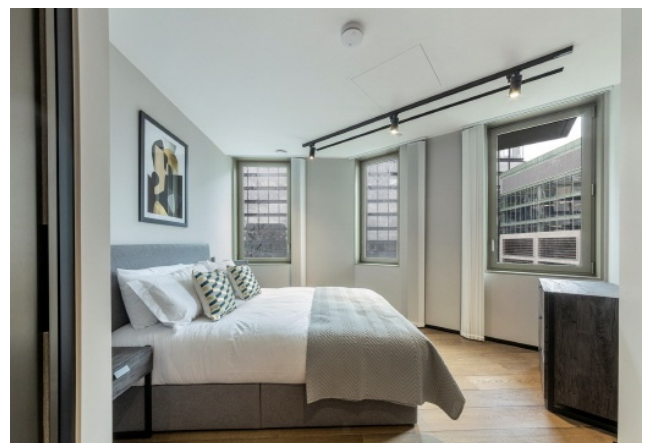




## ABOUT THE HOME

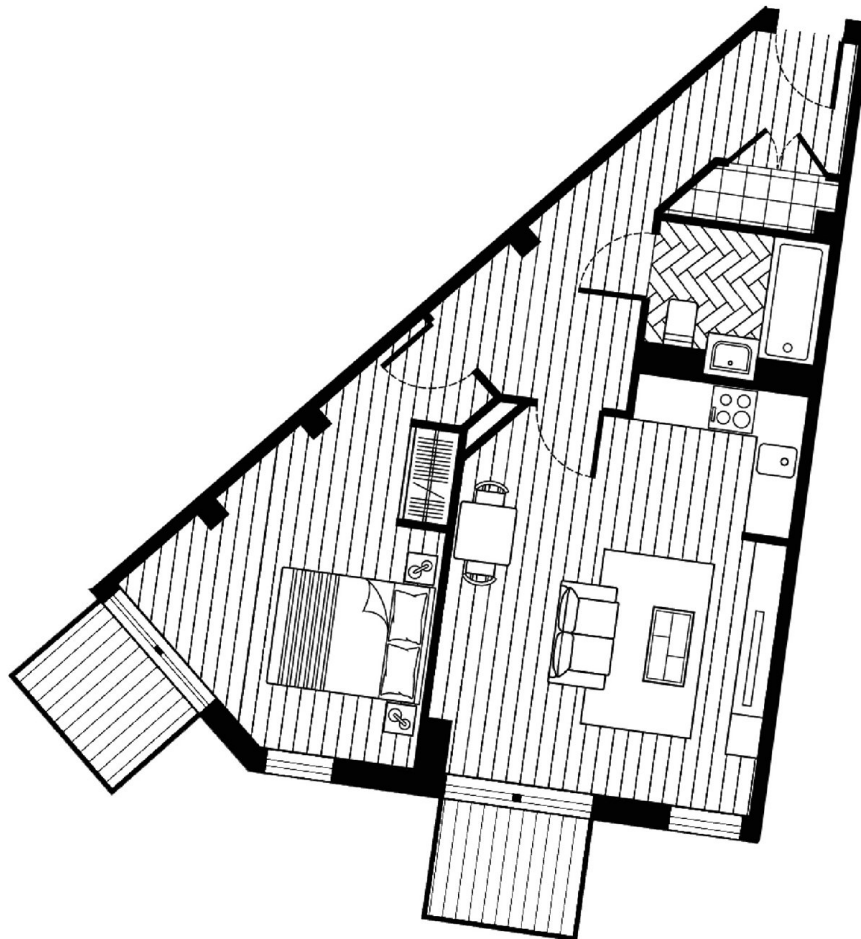
Located in Shoreditch, the property is close to Michelin-starred restaurants, Spitalfields Market, and the district's cultural and creative attractions. The site incorporates the remains of Shakespeare's Curtain Theatre (1577) and is planned as a future cultural landmark.

Liverpool Street Station is a five-minute walk, offering Underground, rail, and Overground connections across London and beyond. The development is also near major universities and London's tech district, adjacent to the new Amazon HQ.







**1 bed apartment**

**Approximate gross internal area: 582sq ft / 54sqm**

Whilst every attempt has been made to ensure the accuracy of the floorplan contained here, measurements of doors, windows, rooms and any other items are approximate. No responsibility is taken for any error, omission, or mis-statement. This plan is for illustrative purposes only and should be used as such by any prospective purchaser. The services, systems and appliances shown have not been tested and no guarantee as to their operability or efficiency can be given.  
© Copyright LiFE Residential 2021.

**LiFE RESIDENTIAL**

71 Drayton Park, London, N5

1BF

Sales: 020 3838 8666

Lettings: 020 7359 4488

Energy Rating: B. We aim to make our particulars both accurate and reliable. However they are not guaranteed; nor do they form part of an offer or contract. If you require clarification on any points then please contact us, especially if you're traveling some distance to view. Please note that appliances and heating systems have not been tested and therefore no warranties can be given as to their good working order.