



Lyncroft Gardens, TW3

£639,950

Dexters



Lyncroft Gardens, TW3

Offered to the market with no onward chain is this immaculately presented four bedroom semi detached house on a popular and sought after residential road. Spanning more than 1,330 square feet of generous living space, this delightful house is packed with 1930's character features. The light and bright front reception features a stunning bay-fronted window, whilst the rear dining/reception room is a fantastic space for entertaining friends and family. On the first floor there are two well proportioned bedrooms in addition to a single bedroom and family bathroom. We love the generous loft extended principle bedroom with en-suite shower room. Further benefits include a large private rear garden in addition to a front garden.

Lyncroft Gardens is a sought after road ideally located with local amenities including shops, parks and schools close by. There are also excellent transport links with easy access to neighbouring areas as well as Heathrow Airport and Central London.

Features

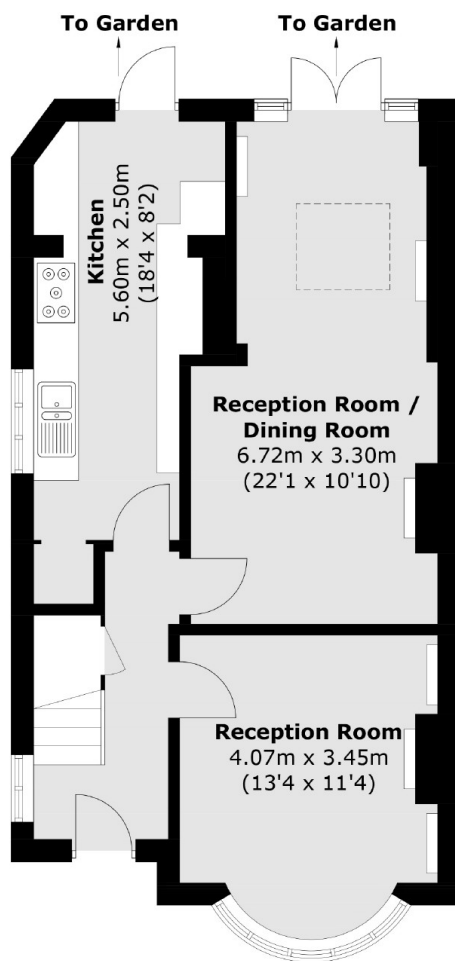
- Semi Detached House
- Four Bedrooms
- Two Bathrooms
- Large Garden
- No Chain
- Excellent Transport Links



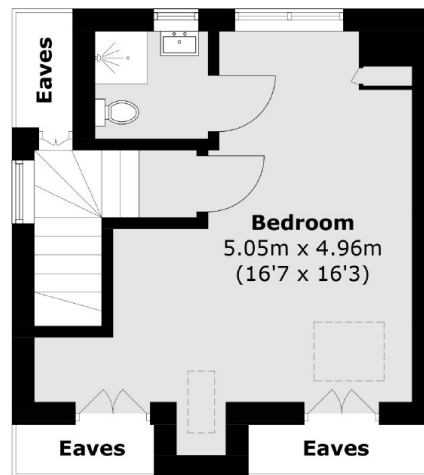




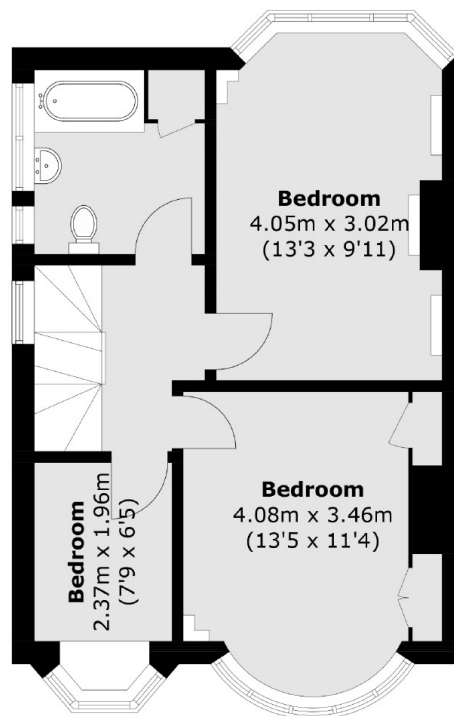
Lyncroft Gardens, Hounslow, TW3



Ground Floor



Second Floor



First Floor

Total area (approx.): 124.0 sq. m (1,334.7 sq. ft)
(Excluding Eaves)