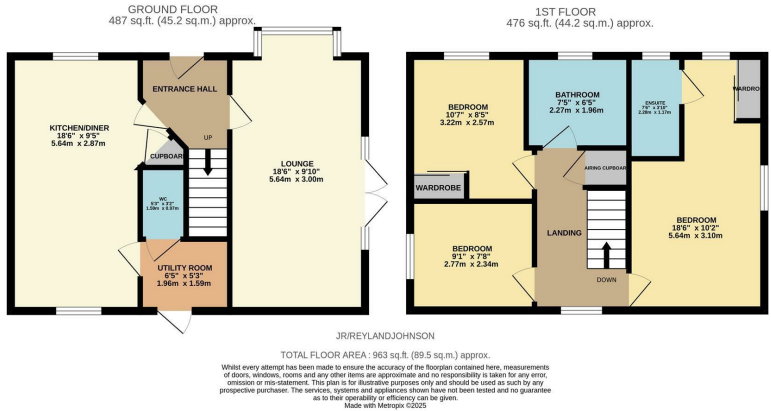


Juniper Road, Old Harlow, CM17 0FU
£500,000



Juniper Road, Old Harlow, CM17 0FU

Offered with no onward chain is this immaculately presented, three bedroom detached family home located in the desirable development of Gilden Park, Old Harlow. As you enter there is a hallway leading to an open plan kitchen/diner with a range of fitted wall and base units, a utility room and cloakroom/WC, plus a large 18ft lounge. Upstairs there are three bedrooms, two of which have fitted wardrobes, an en-suite to the master, and a family bathroom with a modern white three piece suite. Outside, the west facing rear garden is laid to artificial lawn, with a large patio area, outbuilding/summer house and a shed, with rear access leading out to the driveway for two cars. Juniper Road is located just off Bird Cherry Lane, within walking distance of excellent local schools, shops, open fields and play areas, plus the M11 junction 7A is close by. Please note there is an estate charge with this development.



Energy Efficiency Rating			Environmental Impact (CO ₂) Rating		
	Current	Potential		Current	Potential
Very energy efficient - lower running costs			Very environmentally friendly - lower CO ₂ emissions		
(92 plus) A		95	(92 plus) A		
(81-91) B			(81-91) B		
(69-80) C			(69-80) C		
(55-68) D			(55-68) D		
(39-54) E			(39-54) E		
(21-38) F			(21-38) F		
(1-20) G			(1-20) G		
Not energy efficient - higher running costs			Not environmentally friendly - higher CO ₂ emissions		
England & Wales			England & Wales		
EU Directive 2002/91/EC			EU Directive 2002/91/EC		

These particulars, whilst believed to be accurate are set out as a general outline only for guidance and do not constitute any part of an offer or contract. Intending purchasers should not rely on them as statements of representation of fact, but must satisfy themselves by inspection or otherwise as to their accuracy. No person in this firms employment has the authority to make or give any representation or warranty in respect of the property.