

ALLDAY  
& MILLER



Court Drive, Hillingdon, UB10 0BL  
£925,000

3 1 2 E





Court Drive, Hillingdon, UB10 0BL

**£925,000**

- Detached Family Home
- Desirable Location
- Close To Well Regarded School
- Over Looking Court Park
- No Chain
- Double Garage
- Large Front Drive
- Corner Plot
- Great Extension Possibilities (stpp)
- Conservatory



## Description

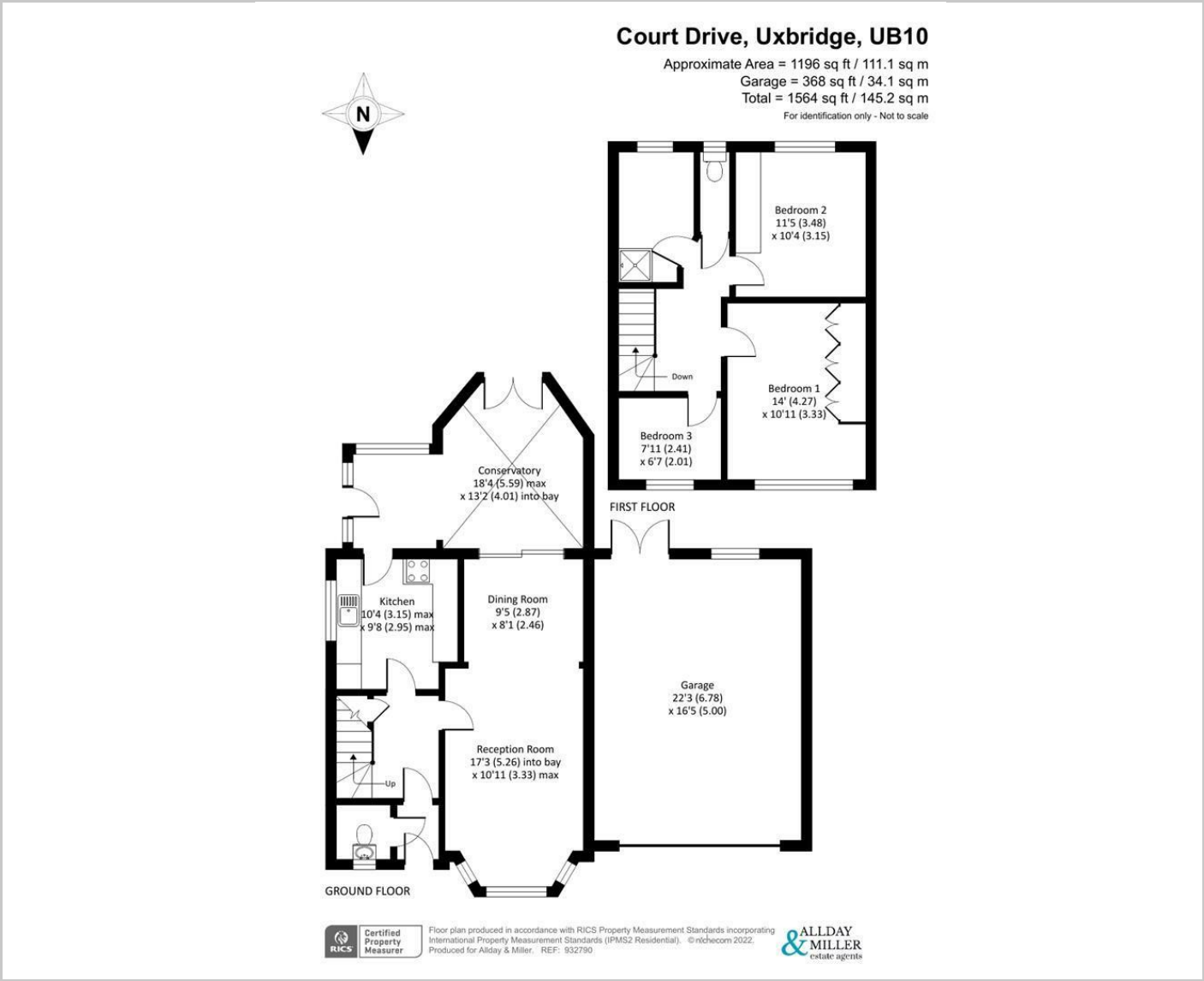
The accommodation comprises a welcoming entrance hallway, a front aspect reception room with a bay window, which flows seamlessly onto a dining room with sliding doors giving access to a spacious conservatory. Completing the ground floor is a kitchen and guest cloakroom. The first floor holds two double bedrooms, followed by a smaller third bedroom, a shower room and separate WC. Externally, there is off street parking via own drive, a neatly presented rear garden and access to the double garage via the front and back of the property.

## Situation

Court Drive is a sought after residential location in North Hillingdon situated directly opposite the beautiful Court Park. The home is within the catchment area for many favoured schools and is a short drive from Uxbridge town centre's multiple shopping/leisure facilities and tube station and the A/M40 and M4 motorways networks.



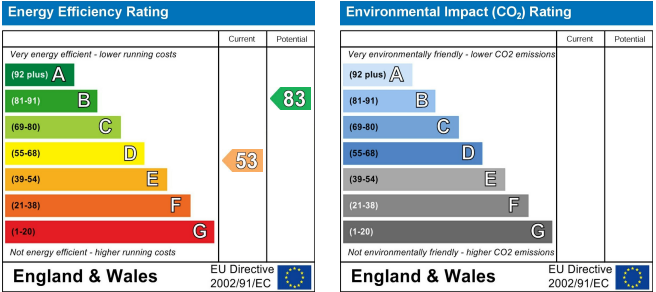
Floor Plans



Area Map



Energy Performance Graph



These particulars, whilst believed to be accurate are set out as a general outline only for guidance and do not constitute any part of an offer or contract. Intending purchasers should not rely on them as statements of representation of fact, but must satisfy themselves by inspection or otherwise as to their accuracy. No person in this firms employment has the authority to make or give any representation or warranty in respect of the property.