



Bolton Head Barn | Gosforth | Seascale | CA20 1EW

Guide Price £875,000



david britton
ESTATES



Key Features

- Unique and Luxurious 5 bedroom barn conversion
- Currently trading as a Six-bedroom luxury Bed & Breakfast
- Presented and furnished to an exceptional standard
- With Planning permission to convert to residential use or the potential
- Hot tub with spectacular panoramic fell views
- Approx. three acres of private grounds
- Planning permission granted for swimming pool conversion
- Outstanding reviews and a loyal, returning guest base
- Alpacas included by negotiation — a unique and much-loved guest attraction
- Scope to grow further — wellness, retreats or expanded accommodation (STP)

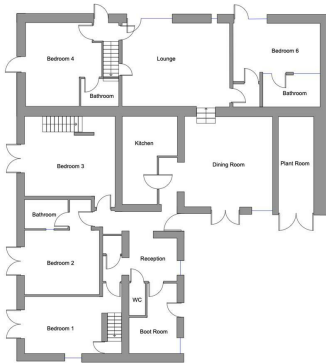
Summary

This stunning 5 bedroom barn conversion is currently trading as 1682 Wasdale, one of the Lake District's finest luxury Bed & Breakfast's, an award-winning retreat set within approximately three acres of stunning West Cumbrian countryside.

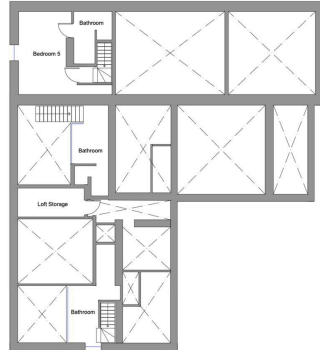




Floor plans



Ground Floor

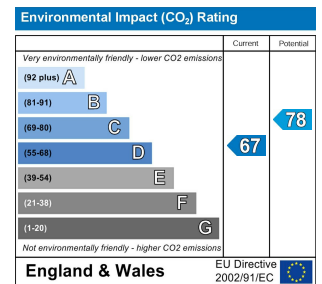
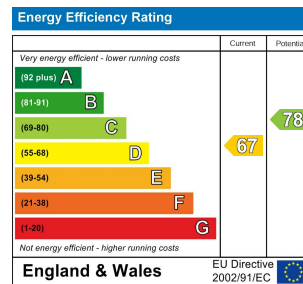


Upper Floor

COUNCIL TAX BAND - CopelandD

DISCLAIMER

These particulars, whilst believed to be accurate are set out as a general guideline and do not constitute any part of an offer or contract. Intending Purchasers should not rely on them as statements of representation of fact but must satisfy themselves by inspection or otherwise as to their accuracy. The services, systems, and appliances shown may not have been tested and has no guarantee as to their operability or efficiency can be given. All floor plans are created as a guide to the lay out of the property and should not be considered as a true depiction of any property and constitutes no part of a legal contract.



Unit 3 Mason Court Gillan Way, Penrith 40 Business Park
 Penrith
 Cumbria
 CA11 9GR
 01768881111
 Sales@brittonestates.co.uk
 www.brittonestates.co.uk