



## Cobbold Road, NW10

£675,000

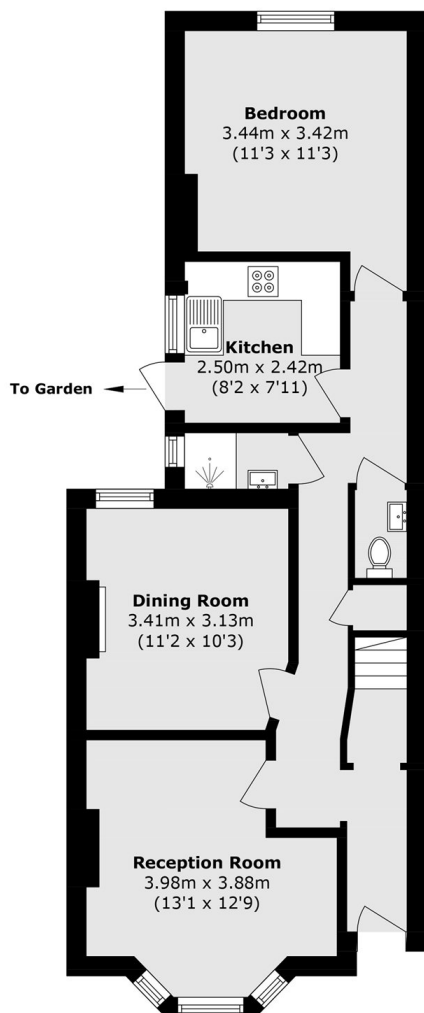
A freehold house offering six bedrooms, three bathrooms, and two reception rooms, with a south-facing garden with a garden shed / storage. With further scope to modernise, the property presents an excellent opportunity to create a substantial family home or investment property.

Cobbold Road, NW10, is conveniently located close to Dollis Hill station and Neasden station, offering Jubilee line access into Central London. The property is also within easy reach of local schools, shops, cafés, and restaurants, with the wider amenities of Willesden Green and Kensal Rise nearby.

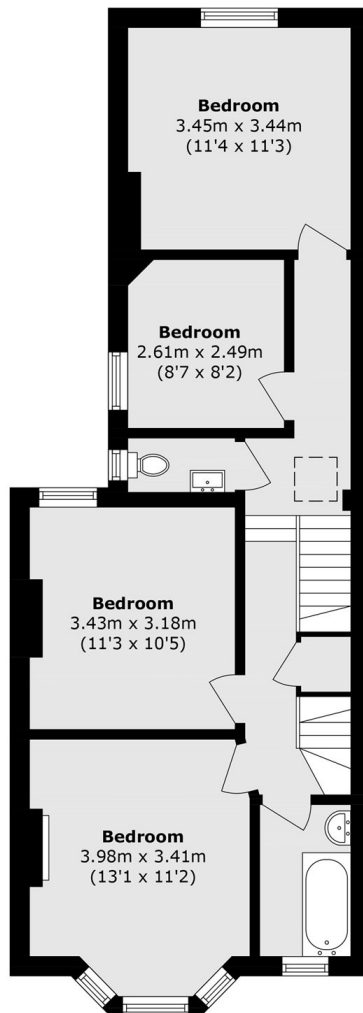
### Features

- Six Bedrooms
- Three Bathrooms
- Freehold House
- Period Conversion
- Close to Transport
- Chain Free

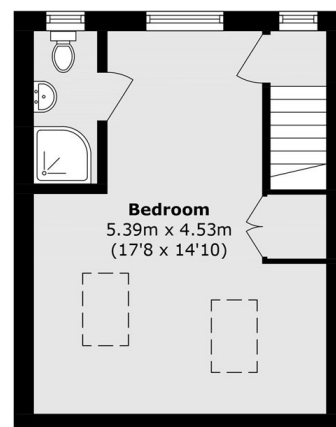
# Cobbold Road, London, NW10



**Ground Floor**



**First Floor**



**Second Floor**

Total area (approx.): 148.6 sq. m (1600.0 sq. ft)