



ST. GEORGES ROAD

Temple Fortune
London NW11



5 Bedroom Semi Detached House

Price **£1,175,000**

A rarely available, nicely refurbished semi detached house, located on a highly sought-after road in Temple Fortune.



Just minutes from Golders Green Tube Station, Hampstead Heath, Golders Hill Park, and close to the prestigious shopping parades of both Temple Fortune and Golders Green. The area also offers excellent bus links, including National Express, and easy access to the M1, A406, and A1.

This spacious property offers 2,182 SQ FT/202.7 SQM of living space with large, airy rooms, high ceilings with a very modern finish and comprises five bedrooms, Three bathrooms (Two Ensuites) spacious triple reception room, fully kosher kitchen/breakfast room and ground floor cloakroom. The property includes a beautifully landscaped rear garden.



- Five Bedrooms
- Three Bathrooms (Two Ensuites)
- Spacious Triple Reception Room
- Large Kosher Kitchen/Breakfast Room
- Ground Floor Cloakroom
- Airconditioning
- Mature Rear Garden
- 2182 SQ FT/ 202.7 SQM of Living Space
- Nicely Refurbished Throughout
- Walking distance of Golders Green Tube Station
- Close Proximity of Temple Fortune High End Shopping Facilities and Local Amenities
- Huge Storage Space
- Sole Agents

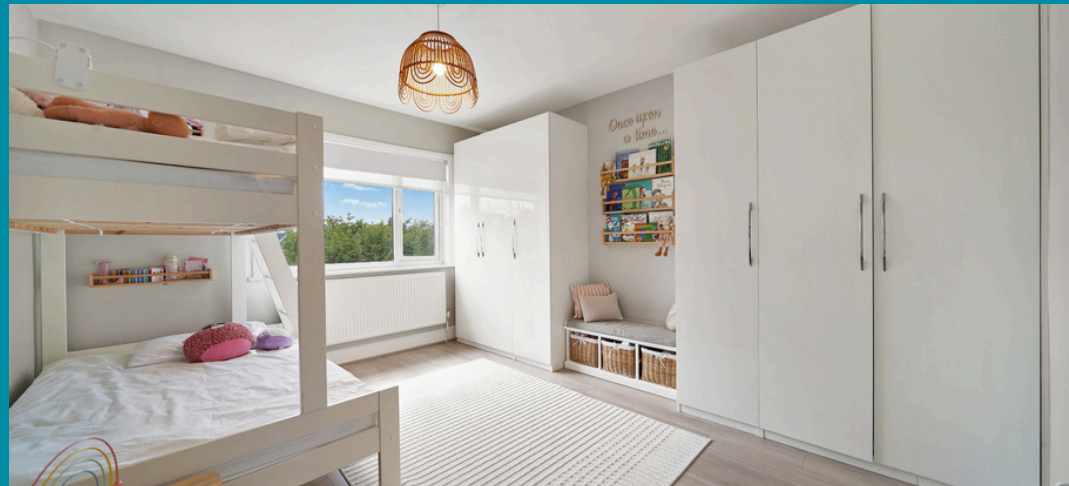
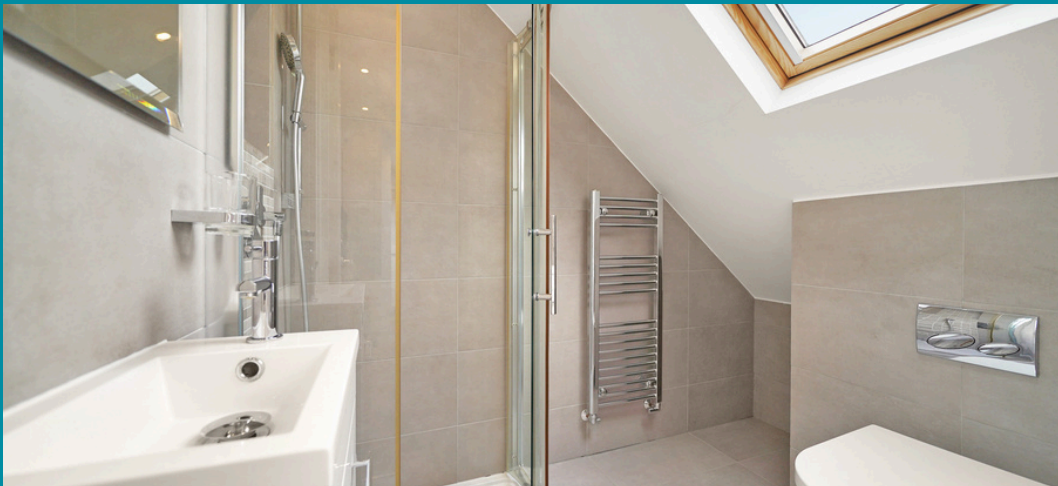
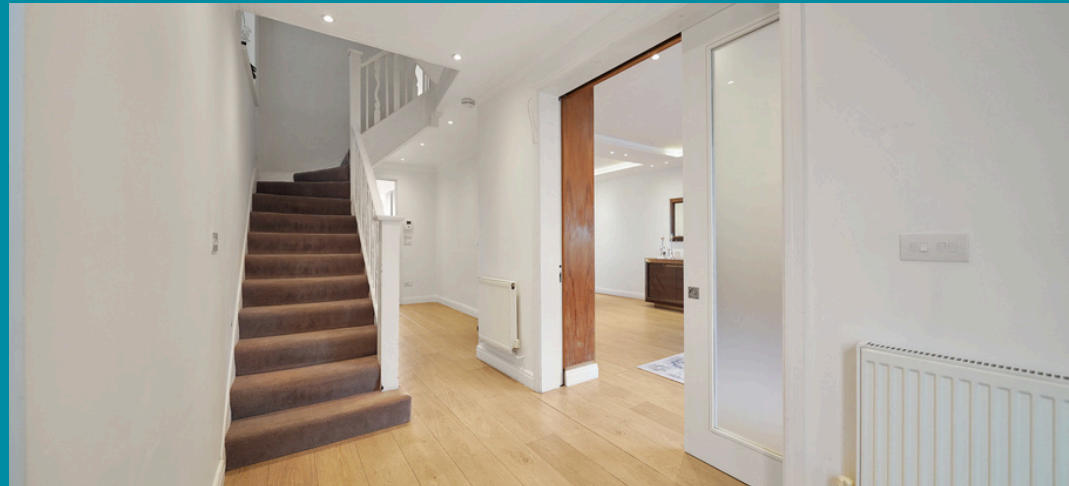




Temple Fortune

Temple Fortune is an affluent and vibrant area situated in the London Borough of Barnet in the Northwest corner of Greater London. It borders Golders Green to the south, Hendon to the west and Finchley to the east. This charming community orientated area is a popular choice for families and professionals with multiple parks, playgrounds, and green spaces for children to explore, as well as a bustling shopping scene with plenty of independent shops, grocers, and cafes to choose from.

Additionally, the area has a range of primary schools, nurseries, and excellent transport links, making it easy to commute to various parts of the city. Temple Fortune is a fantastic location for those seeking a peaceful escape from the hustle and bustle of central London.

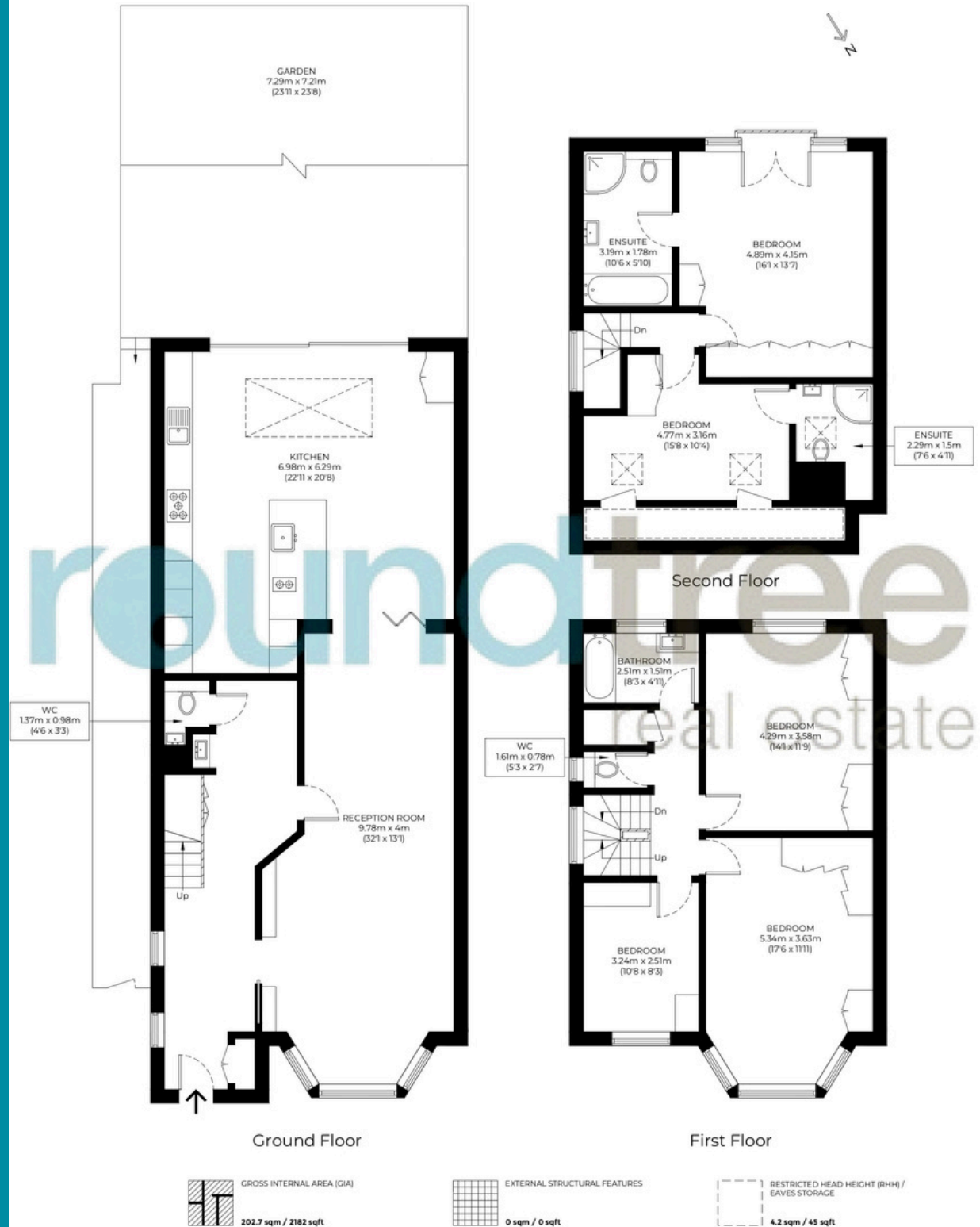


Floorplan

Approximate gross internal area

202.7 sqm / 2182sqft

The floor plan is not to scale and measurements and areas shown are approximate and therefore should be used for illustrative purposes only. The plan has been prepared in accordance with the RICS code of Measuring Practice and whilst we have confidence that the information, it must not be relied on. Maximum widths and lengths are represented on the floor plan. If there is any aspect of particular importance, you should carry out or commission your own inspection of the property.



020 8203 2111
www.theroundtree.com

To register your interest:

020 8203 2111

sales@theroundtree.com

theroundtree.com

1 Sentinel Square, Brent Street Hendon, NW4 2EL

roundtree

real estate

General: While we endeavor to make our sales particulars fair, accurate and reliable, they are only a general guide to the property and, accordingly, if there is any point which is of particular importance to you, please contact the office and we will be pleased to check the position for you, especially if you are contemplating travelling some distance to view the property. Measurements: These approximate room sizes are only intended as general guidance. You must verify the dimensions carefully before ordering carpets or any built-in furniture. Services: Please note we have not tested the services or any of the equipment or appliances in this property, accordingly we strongly advise prospective buyers to commission their own survey or service reports before finalizing their offer to purchase. THESE PARTICULARS ARE ISSUED IN GOOD FAITH BUT DO NOT CONSTITUTE REPRESENTATIONS OF FACT OR FORM PART OF ANY OFFER OR CONTRACT. THE MATTERS REFERRED TO IN THESE PARTICULARS SHOULD BE INDEPENDENTLY VERIFIED BY PROSPECTIVE BUYERS OR TENANTS. NEITHER ROUNDTREE NOR ANY OF ITS EMPLOYEES OR AGENTS HAS ANY AUTHORITY TO MAKE OR GIVE ANY REPRESENTATION OR WARRANTY WHATEVER IN RELATION TO THIS PROPERTY.